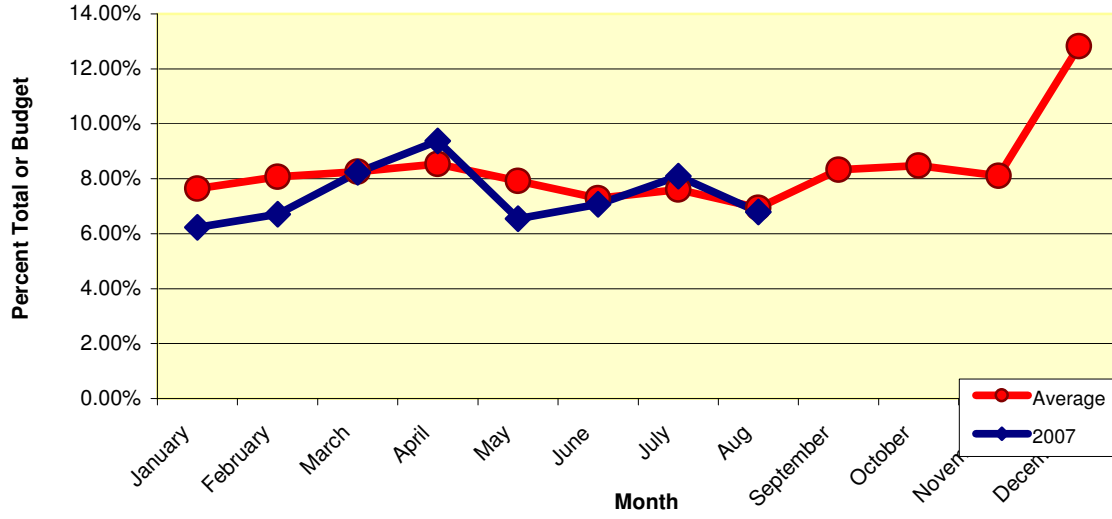
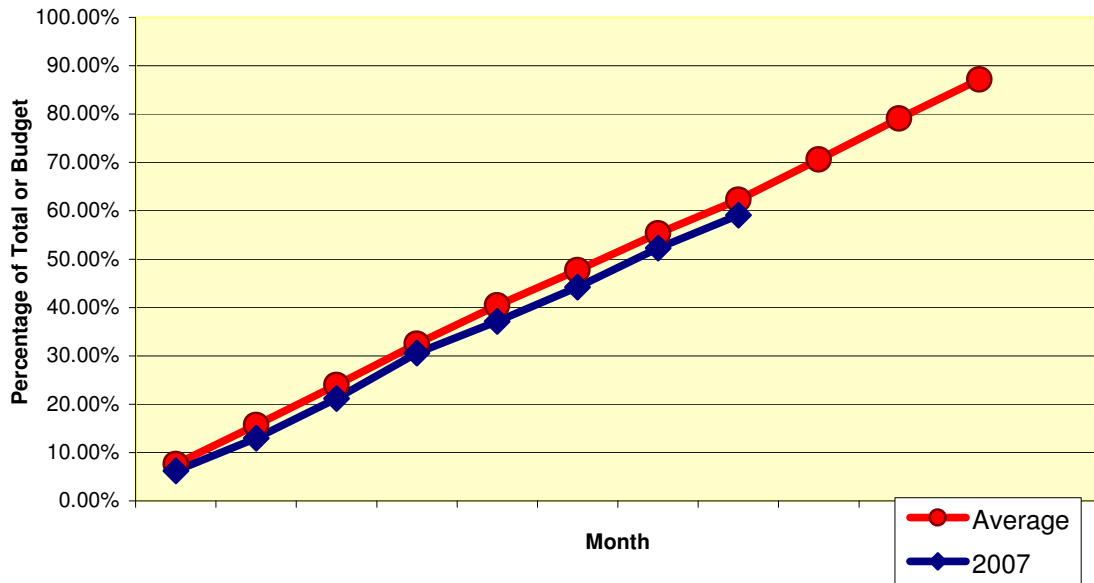


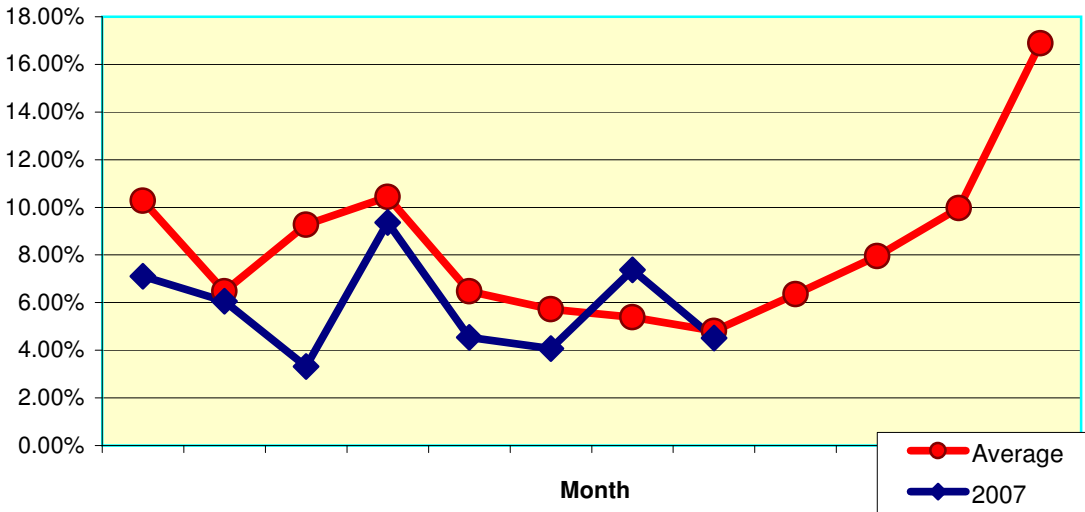
Westminster Presbyterian Church  
 Monthly Percent of Total Pledge Income  
 2007 and Five-Year Average



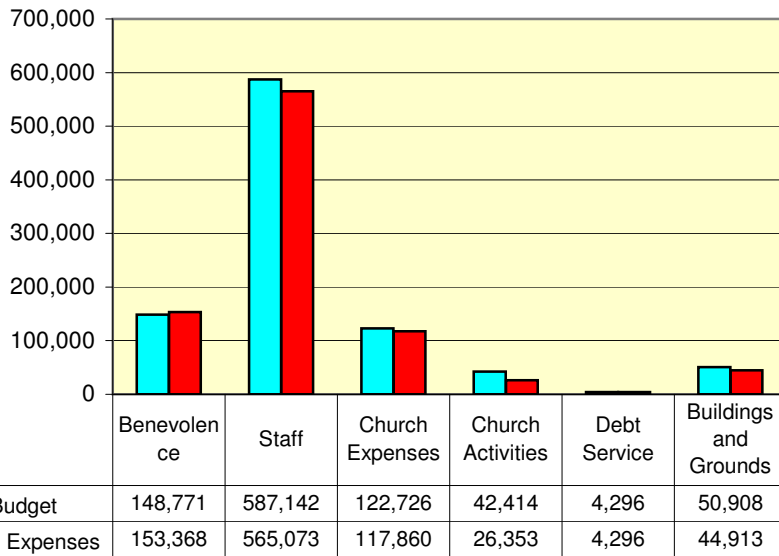
Westminster Presbyterian Church  
 Pledge Income Cumulative Percentage  
 2007 and Five Year Average



**Westminster Presbyterian Church  
Monthly Percent of Total Loose Offerings  
2007 and Five Year Average**



**Westminster Presbyterian Church  
Aug 2007 YTD Expense Analysis**



Westminster Presbyterian Church  
Monthly Percent of Pledge Income To Total Pledges  
2007 as compared to last year

