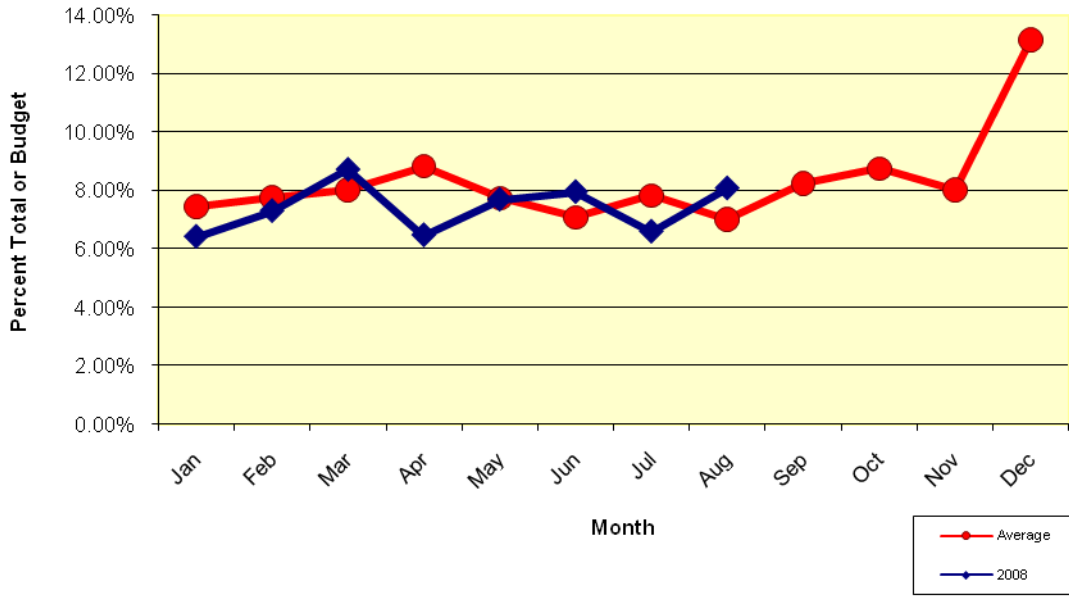
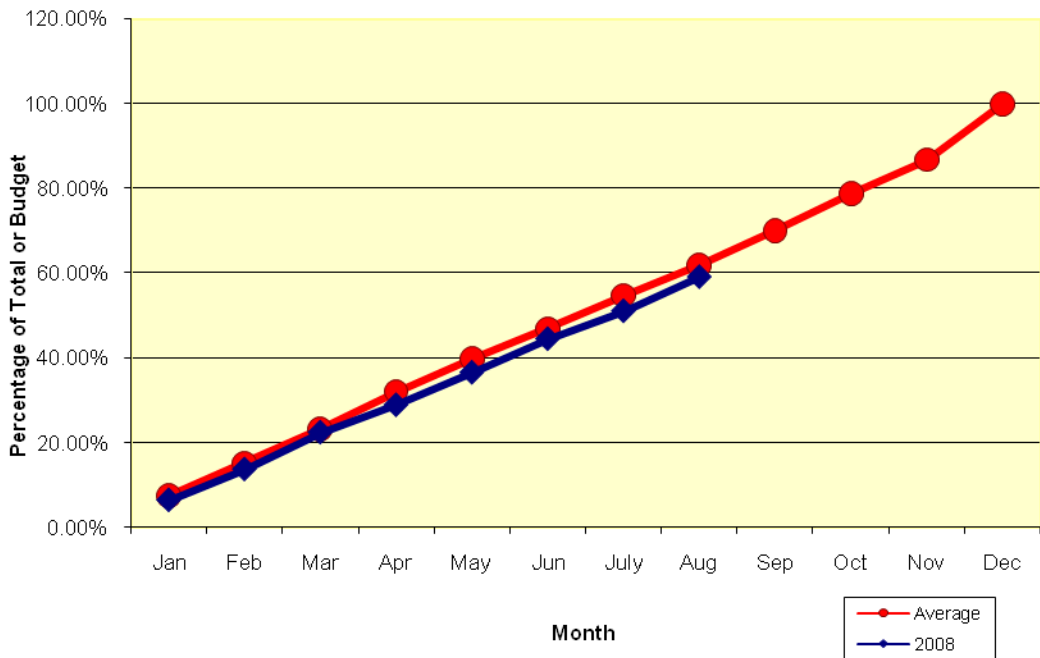


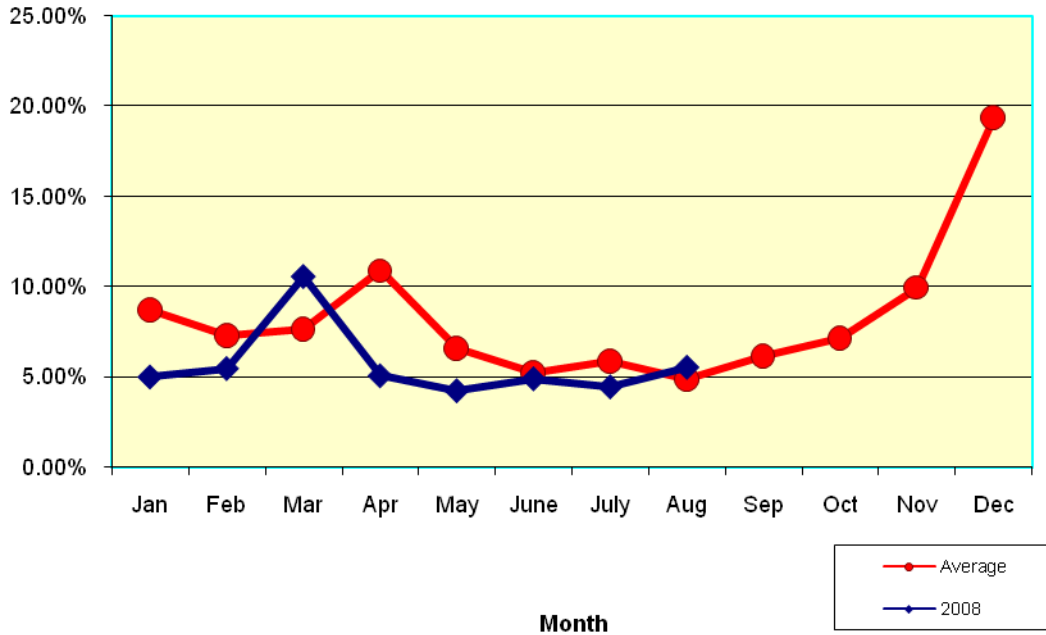
Westminster Presbyterian Church
 Monthly Percent of Total Pledge Income
 2008 and Five-Year Average



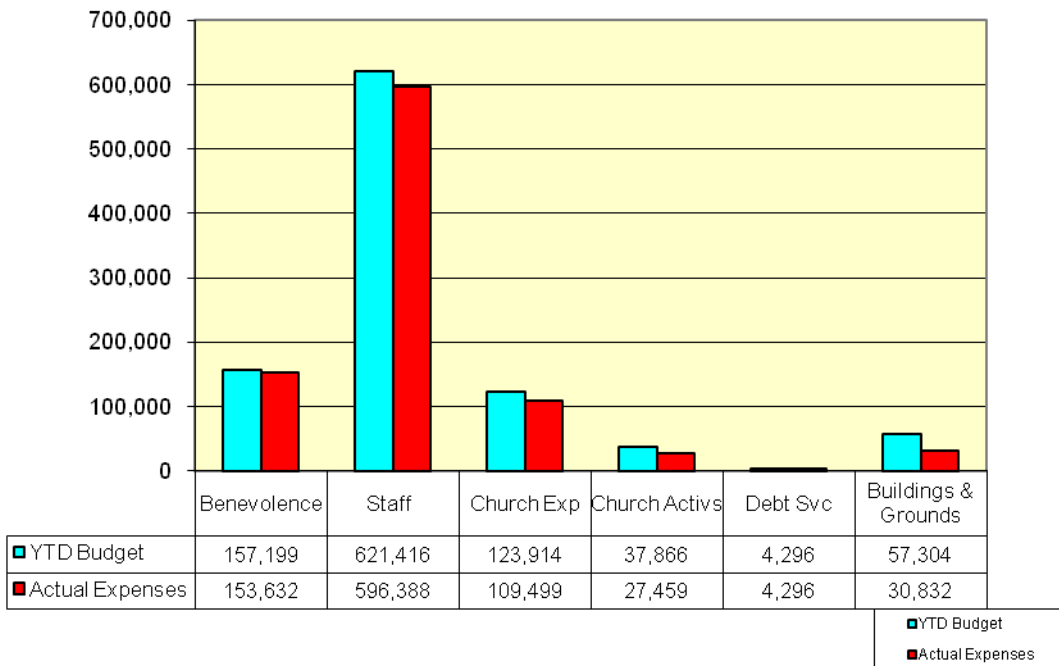
Westminster Presbyterian Church
 Pledge Income Cumulative Percentage
 2008 and Five Year Average



**Westminster Presbyterian Church
Monthly Percent of Total Loose Offerings
2008 and Five Year Average**



**Westminster Presbyterian Church
Aug 2008 YTD Expense Analysis**



Westminster Presbyterian Church
Monthly Percent of Pledge Income To Total Pledges
2008 as compared to last year

