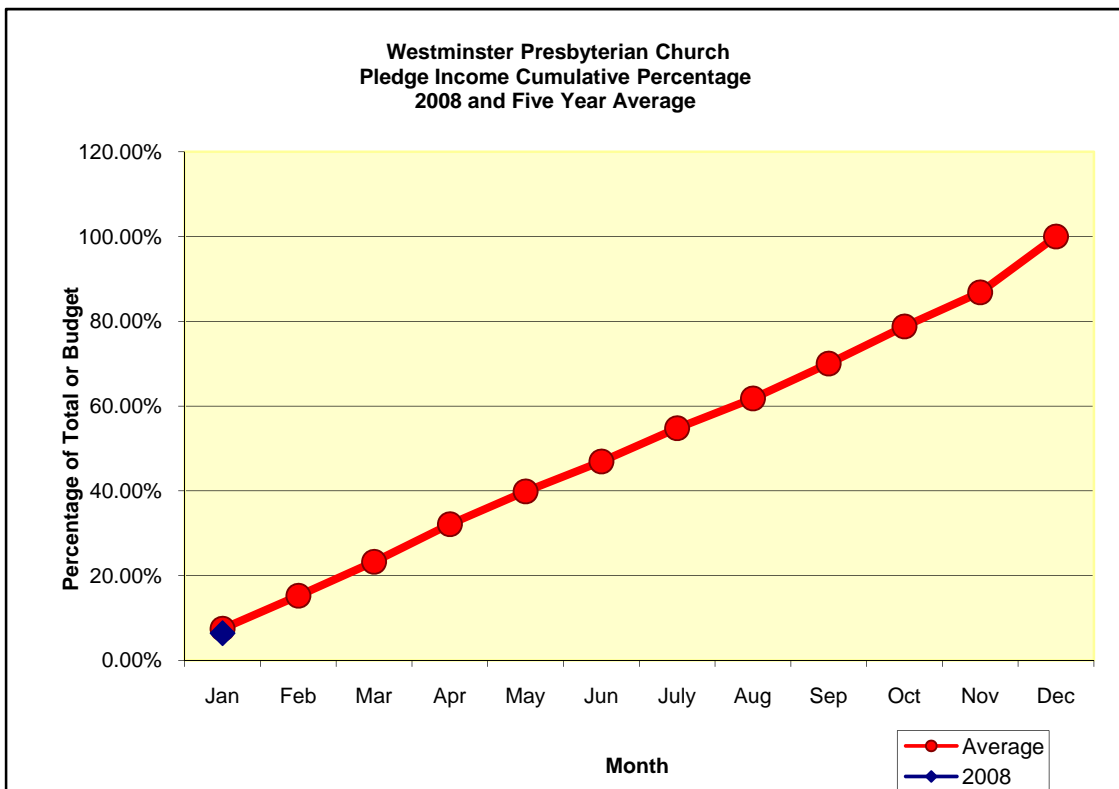
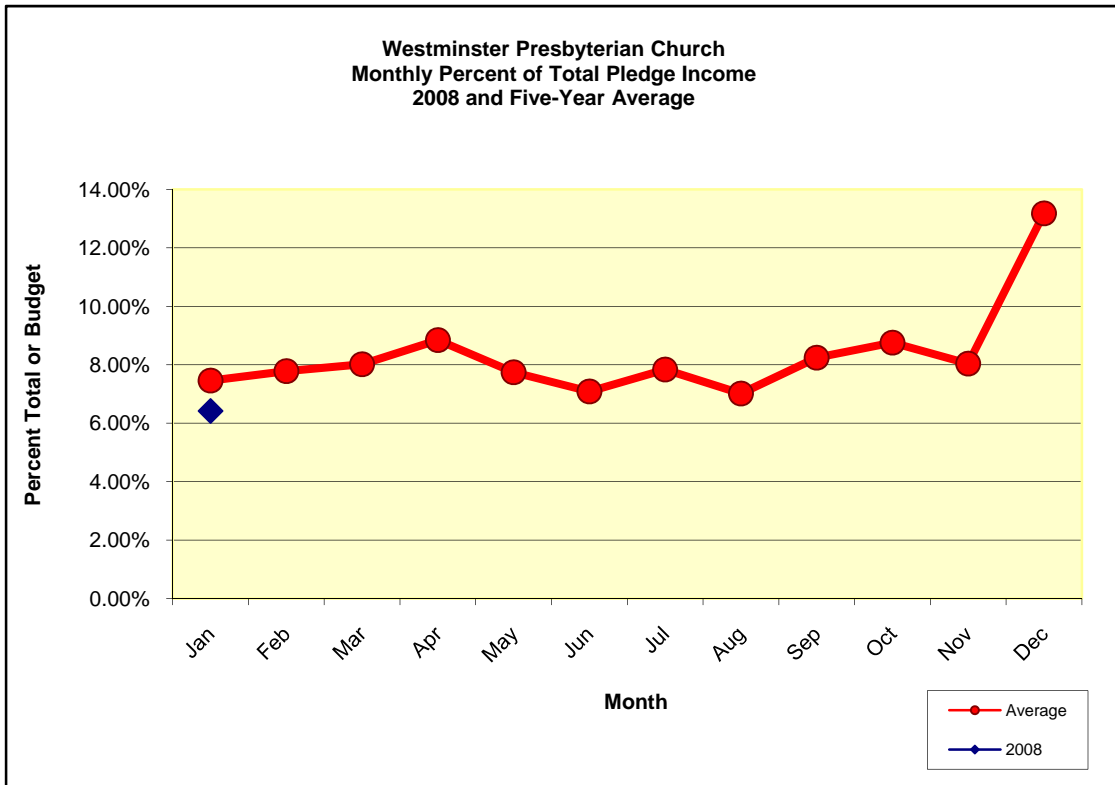
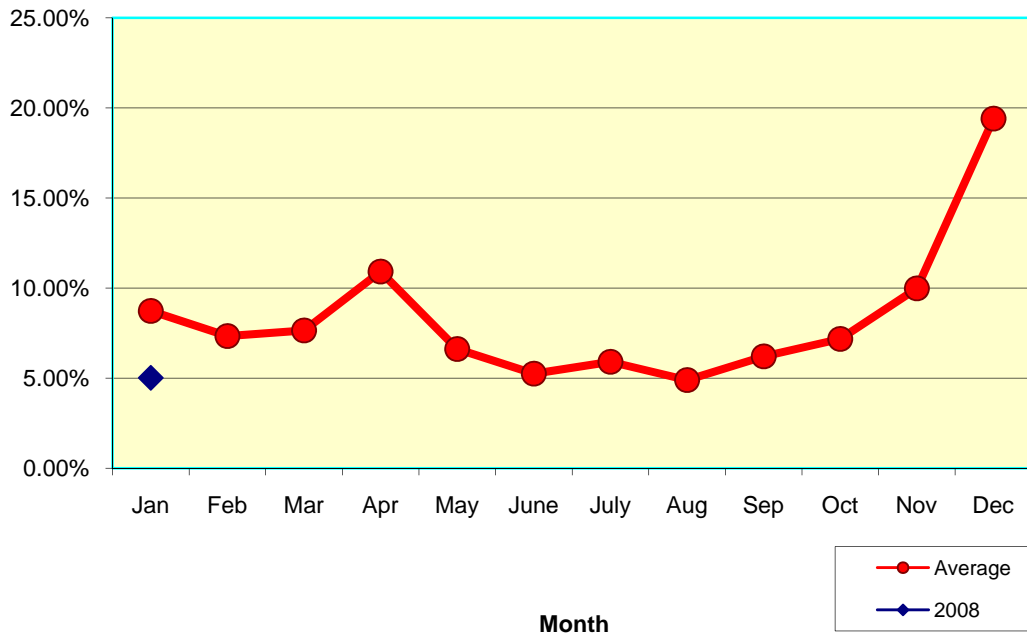


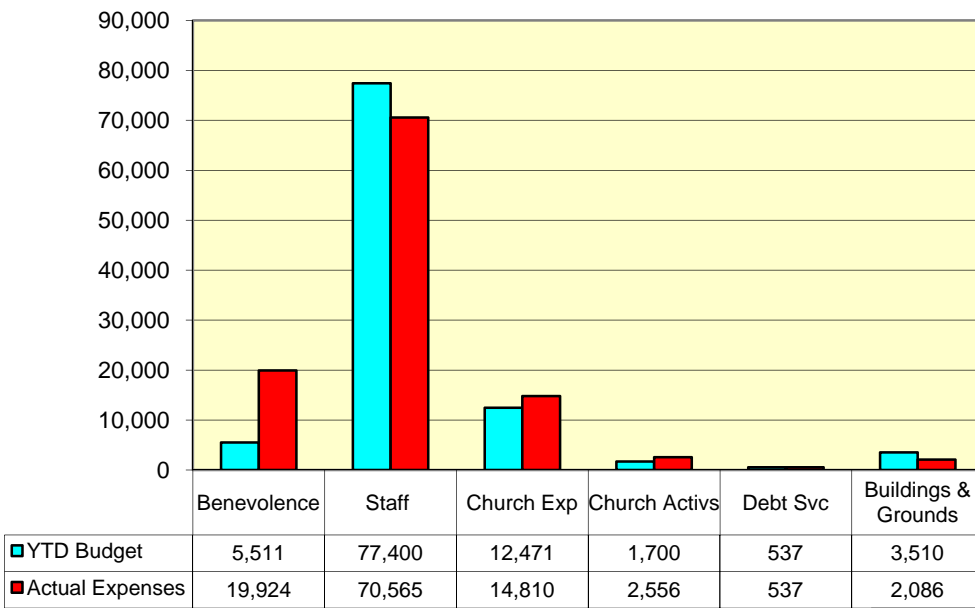
**TREASURER'S GRAPHS  
JANUARY 2008**



**Westminster Presbyterian Church  
Monthly Percent of Total Loose Offerings  
2008 and Five Year Average**



**Westminster Presbyterian Church  
Jan 2008 YTD Expense Analysis**



■ YTD Budget  
■ Actual Expenses

Westminster Presbyterian Church  
Monthly Percent of Pledge Income To Total Pledges  
2008 as compared to last year

