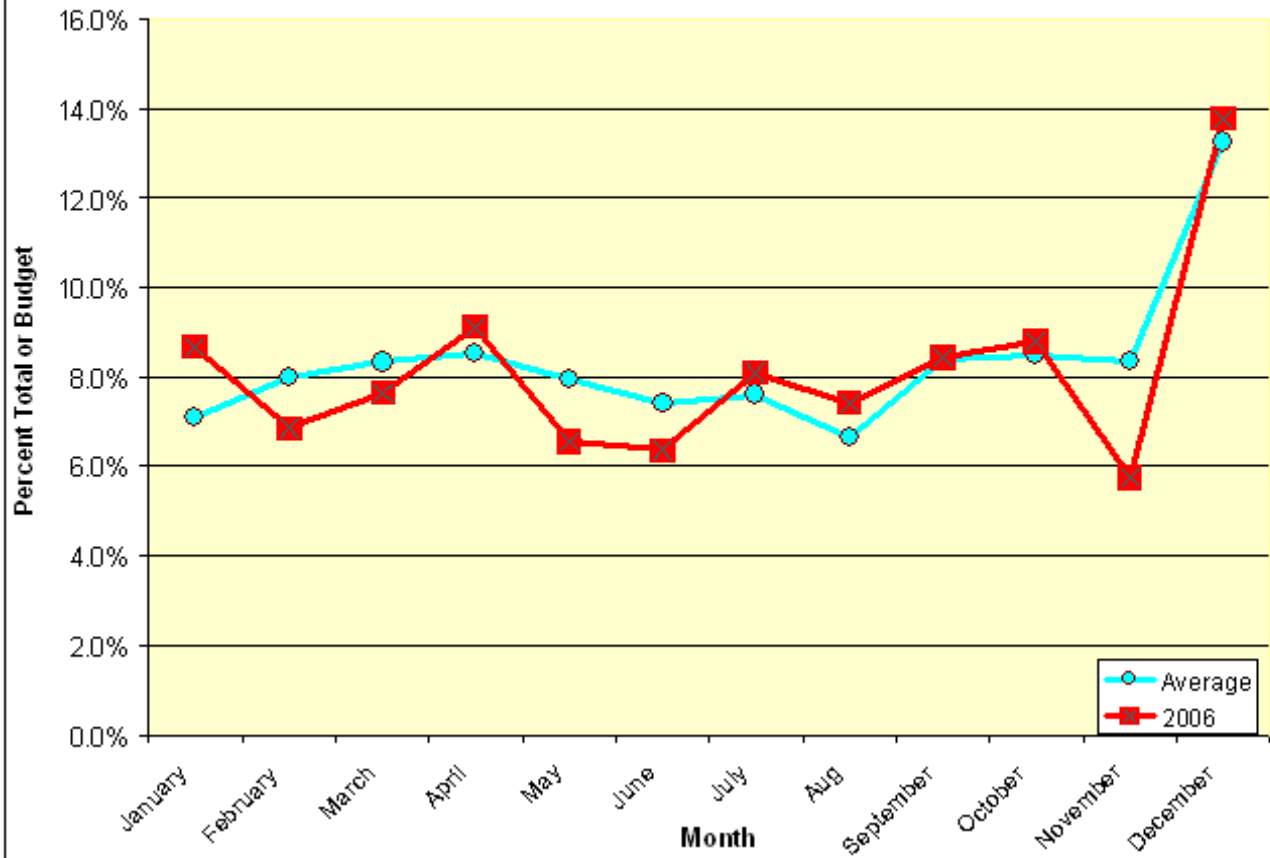
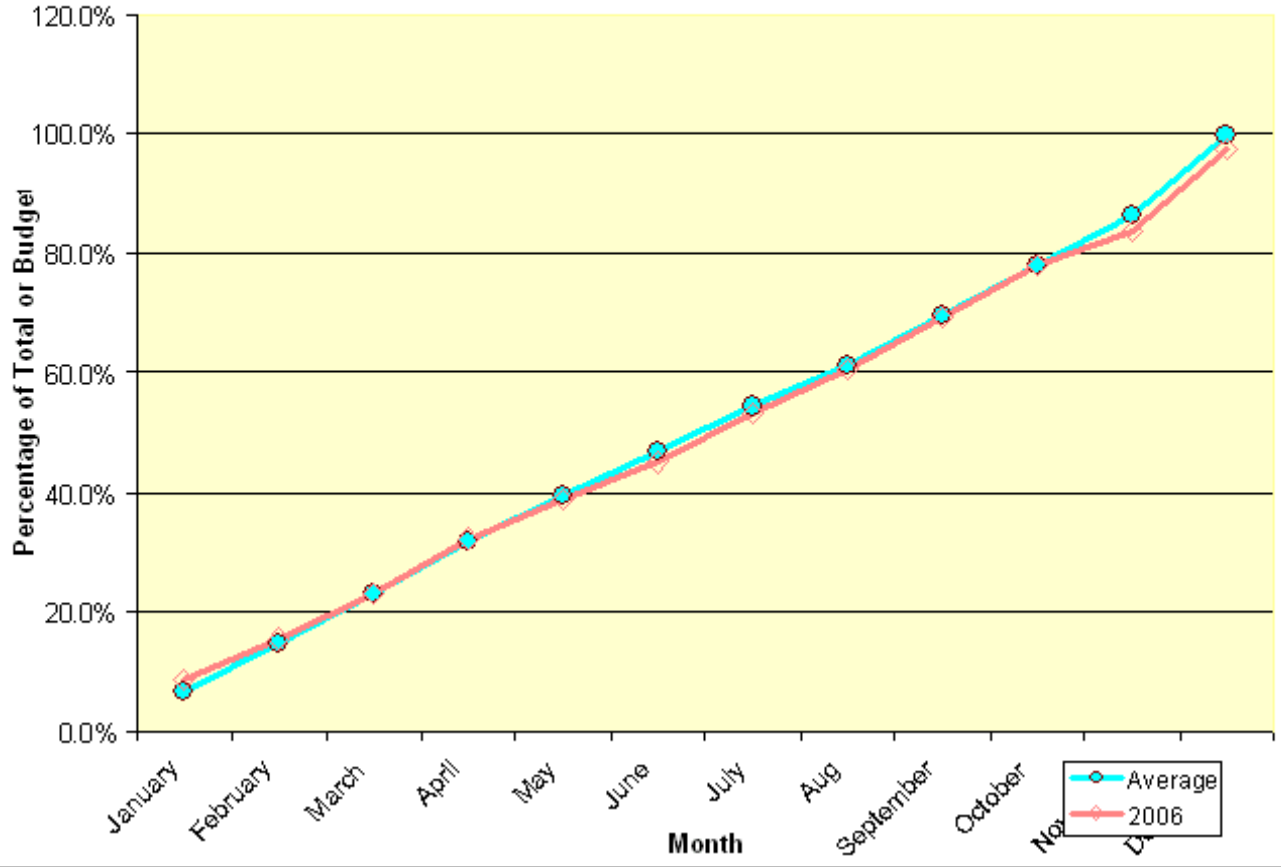


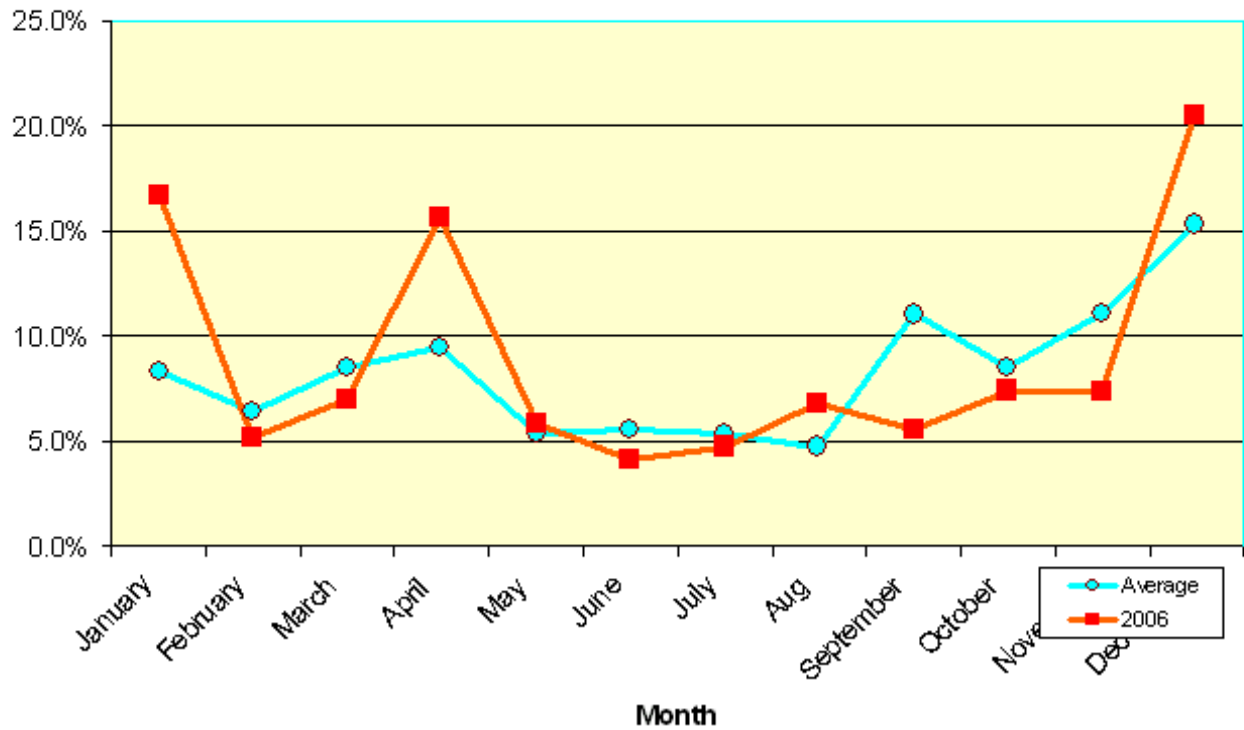
Westminster Presbyterian Church
Monthly Percent of Total Pledge Income
2006 and Five-Year Average



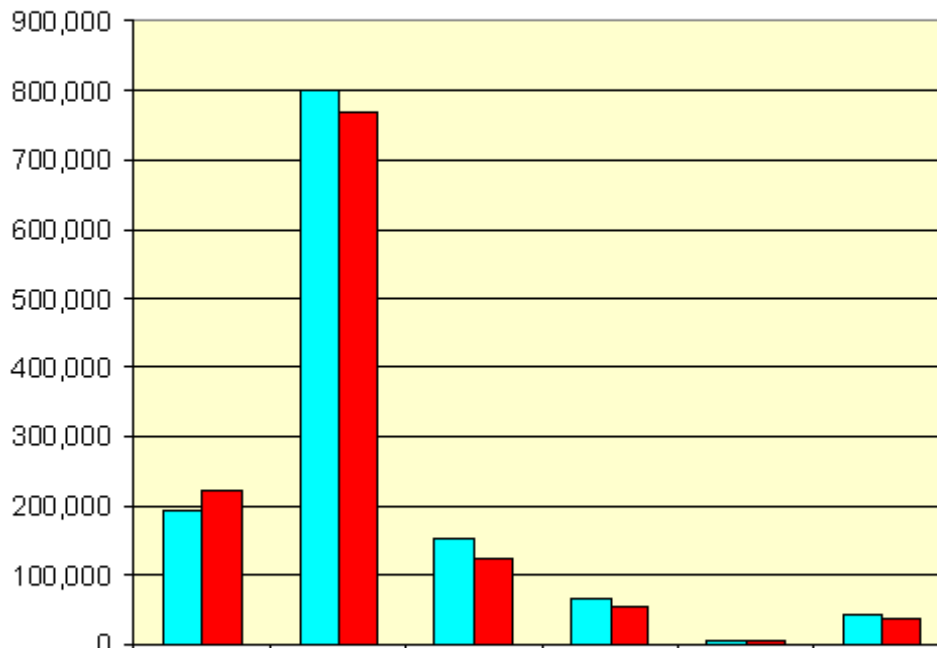
Westminster Presbyterian Church
Pledge Income Cumulative Percentage
2006 and Five Year Average



Westminster Presbyterian Church Monthly Percent of Total Loose Offerings 2006 and Five Year Average



**Westminster Presbyterian Church
Dec 2006 YTD Expense Analysis**



	Benevolence	Staff	Church Expenses	Church Activities	Debt Service	Buildings and Grounds
YTD Budget	194,194	799,128	153,064	65,830	6,443	43,431
Actual Expenses	222,430	767,740	124,277	55,081	6,443	39,652

YTD Budget
Actual Expenses

Westminster Presbyterian Church
Monthly Percent of Pledge Income To Total Pledges
2006 as compared to last year

