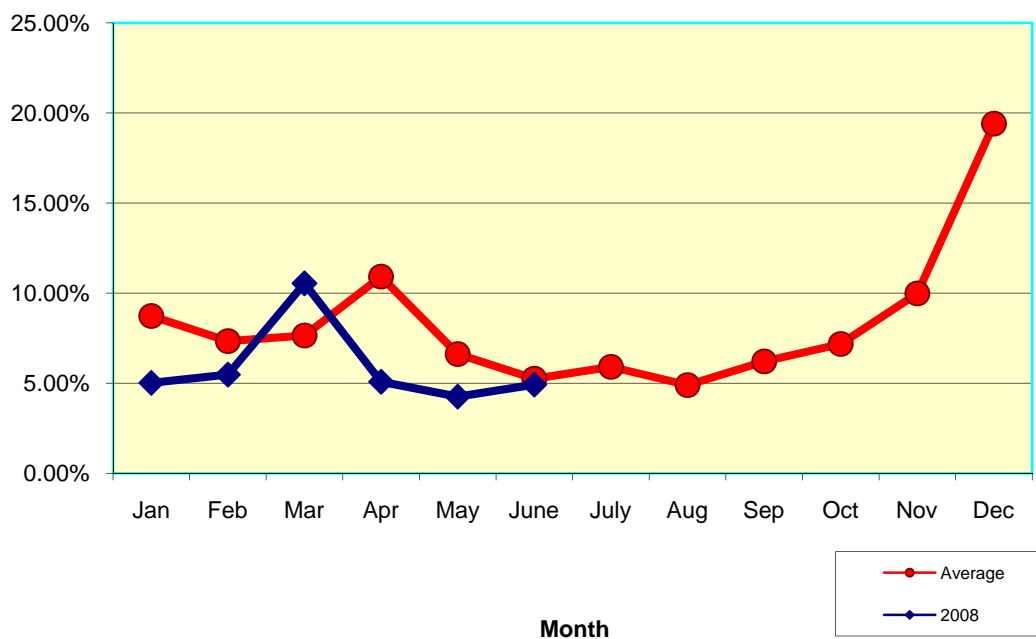
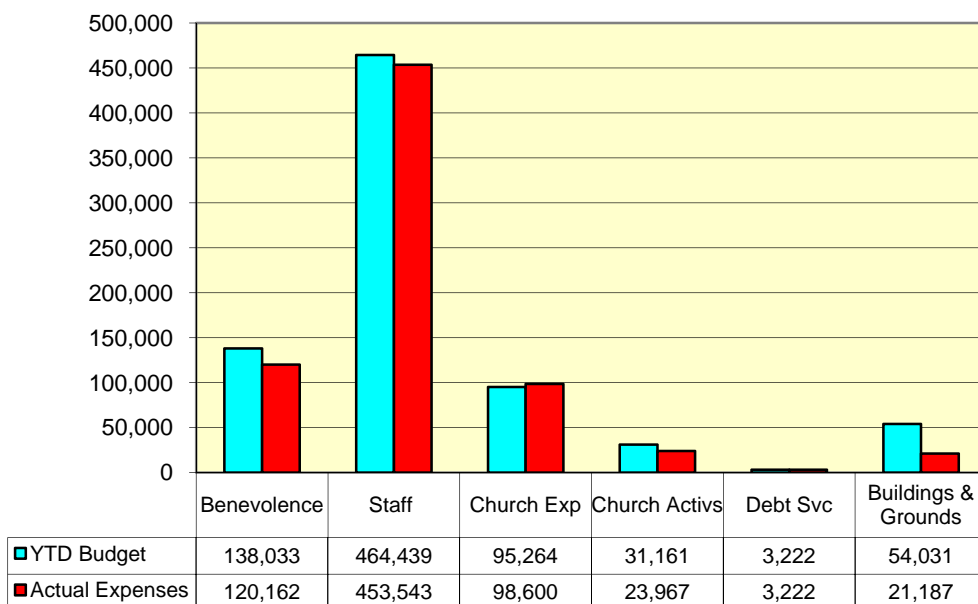


### Westminster Presbyterian Church Monthly Percent of Total Loose Offerings 2008 and Five Year Average



### Westminster Presbyterian Church Jun 2008 YTD Expense Analysis



■ YTD Budget	138,033	464,439	95,264	31,161	3,222	54,031
■ Actual Expenses	120,162	453,543	98,600	23,967	3,222	21,187

■ YTD Budget  
■ Actual Expenses

Westminster Presbyterian Church  
Monthly Percent of Pledge Income To Total Pledges  
2008 as compared to last year

