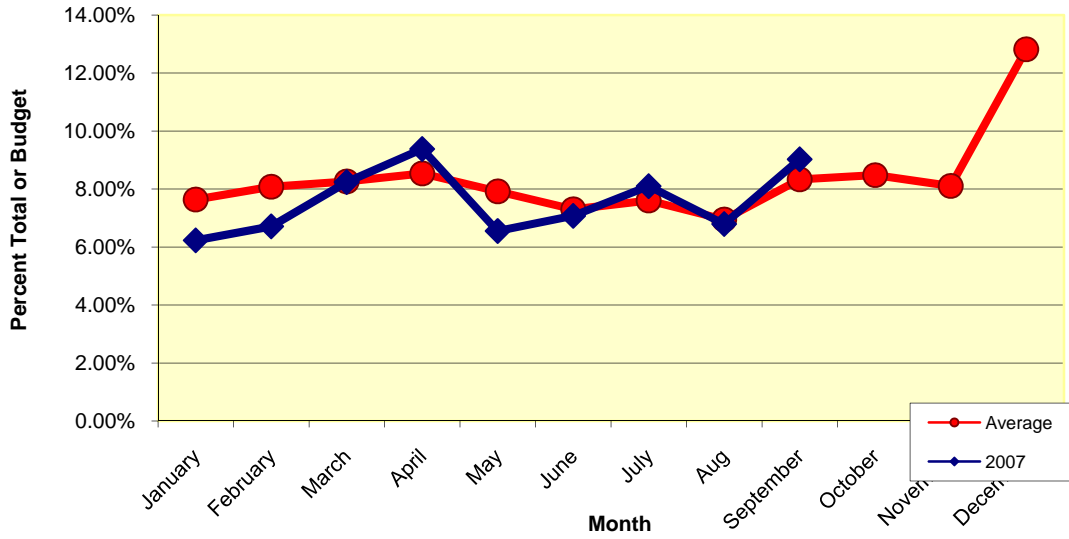
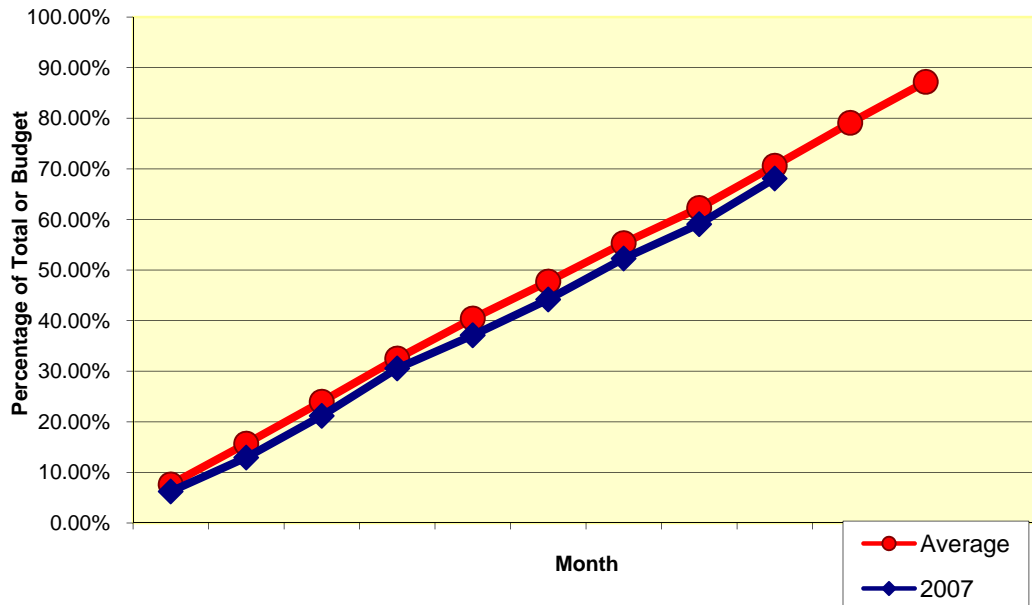


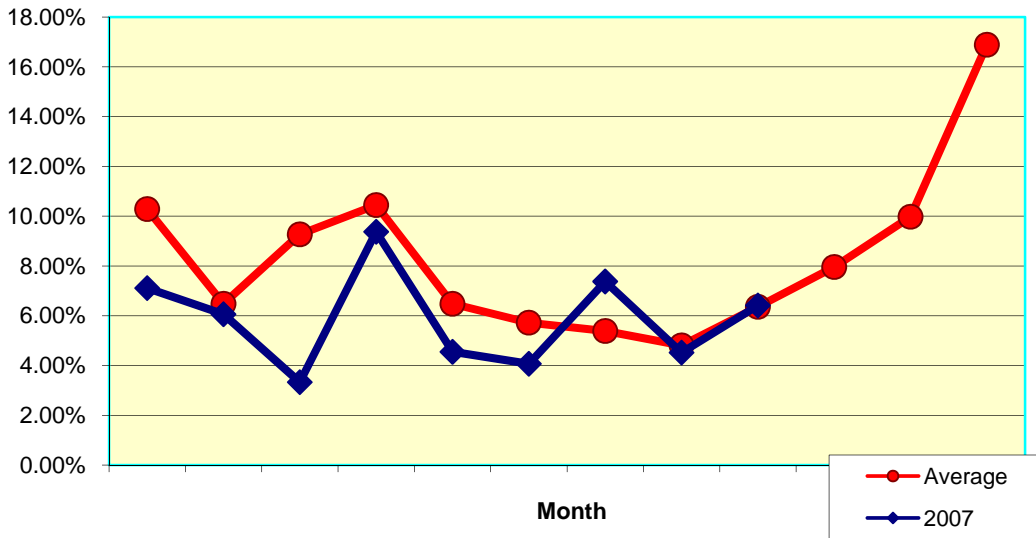
Westminster Presbyterian Church
 Monthly Percent of Total Pledge Income
 2007 and Five-Year Average



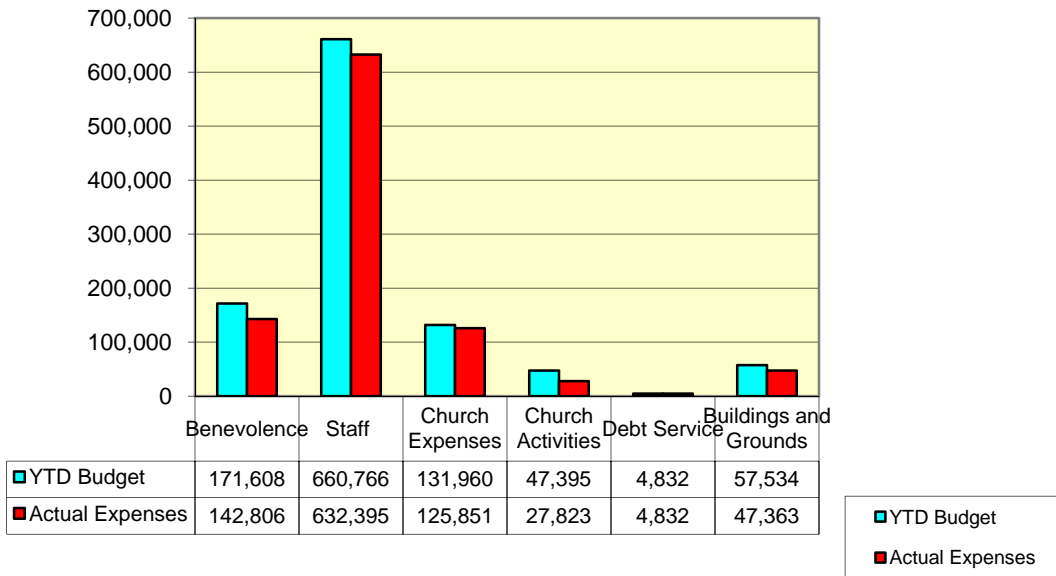
Westminster Presbyterian Church
 Pledge Income Cumulative Percentage
 2007 and Five Year Average



**Westminster Presbyterian Church
Monthly Percent of Total Loose Offerings
2007 and Five Year Average**



**Westminster Presbyterian Church
Sep 2007 YTD Expense Analysis**



Westminster Presbyterian Church
Monthly Percent of Pledge Income To Total Pledges
2007 as compared to last year

