

As of 6/13/08

Treasurer's Report to Session  
5/31/2008  
PLEDGE INCOME

	2007	2008
YTD Pledge Income	\$405,825	\$429,219
YTD Pledge Budget	\$455,710	\$488,681

TOTAL INCOME

	2007	2008
YTD Income	\$533,882	\$543,137
Income Budgeted from Carryover	\$26,782	\$23,433
Total Income	\$560,664	\$566,570
YTD Income Budget	\$602,602	\$633,200

TOTAL EXPENSES

	2007	2008
YTD Expenses	\$609,078	\$600,985
YTD Expense Budget	\$617,276	\$650,185

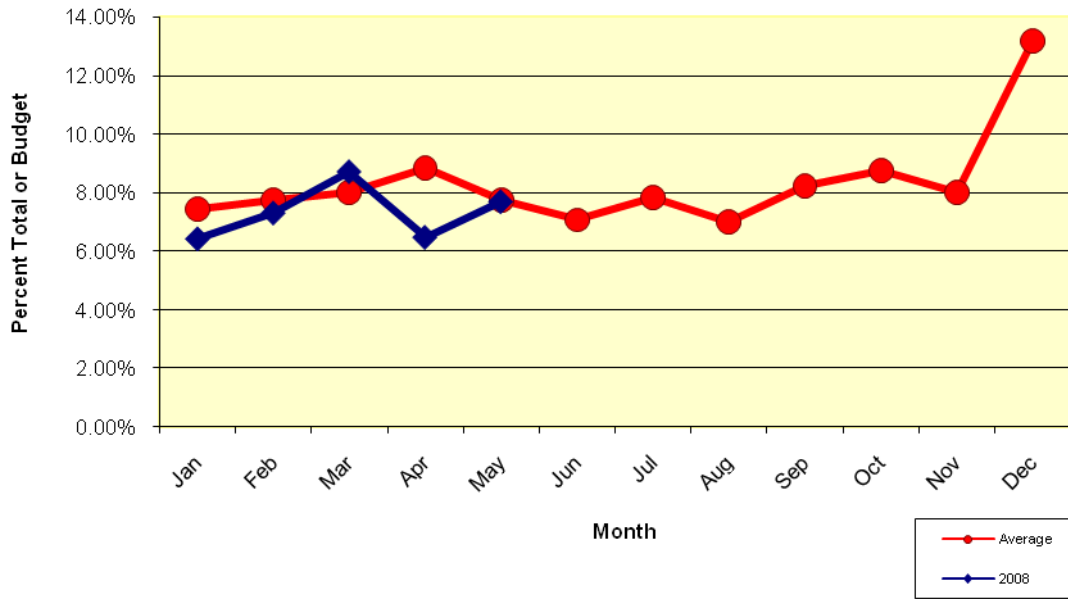
NET INCOME (INCOME – EXPENSES)

	2007	2008
YTD Net Income vs. Expenditures	(\$48,414)	(\$57,848)
YTD Net Income vs. Expendit incl Carryover	(\$21,632)	(\$34,415)

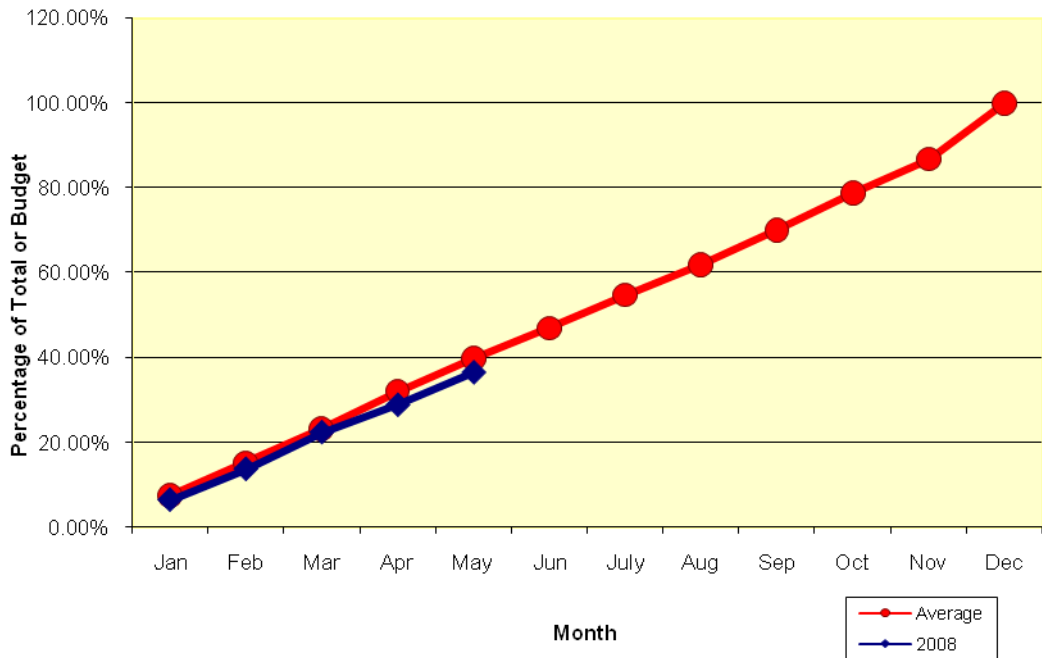
CASH, INVESTMENTS, DEFERRED REVENUE, INTERFUND TRANSACTIONS

	Operating	Foundation	Capital Camp
Cash	\$66,404		\$27,419
Investments	\$240,277	\$772,226	\$147,735
Other Assets	\$89,407	\$46,900	
Deferred Revenue	(\$28,915)		
Note Payable - Boiler	(\$6,289)	\$6,289	
Note Payable – Capital Campaign		\$204,816	(\$204,816)
Note Payable - Cardinal Bank			(\$808,000)
Due To/From Foundation			
Due To/From Capital Campaign			
Other Liability			
Totals	\$360,884	\$1,030,231	(\$837,662)
Temporarily Restricted (in total above)	\$117,868		

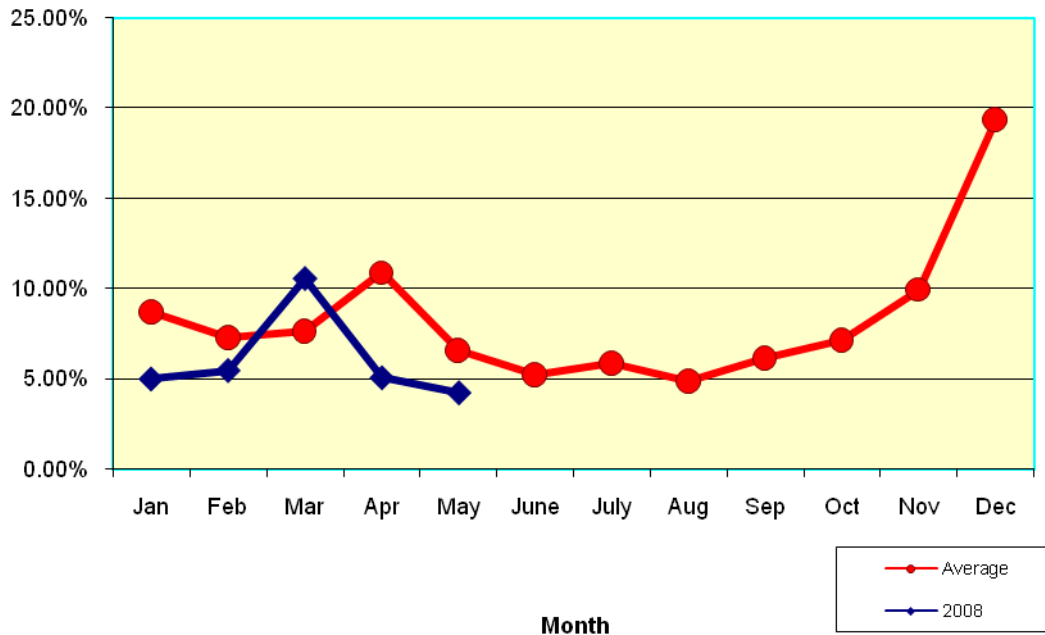
Westminster Presbyterian Church  
 Monthly Percent of Total Pledge Income  
 2008 and Five-Year Average



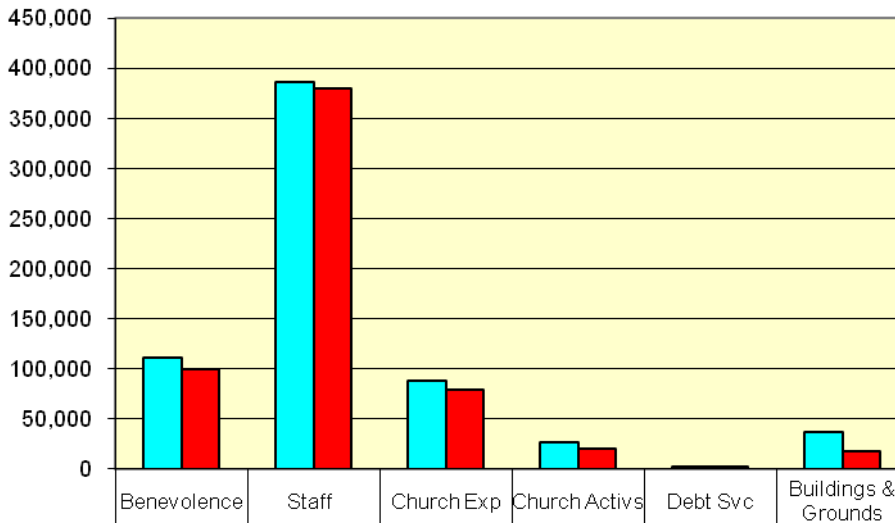
Westminster Presbyterian Church  
 Pledge Income Cumulative Percentage  
 2008 and Five Year Average



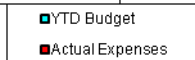
### Westminster Presbyterian Church Monthly Percent of Total Loose Offerings 2008 and Five Year Average



### Westminster Presbyterian Church May 2008 YTD Expense Analysis



YTD Budget	111,249	385,815	87,589	26,327	2,685	36,520
Actual Expenses	100,141	380,144	79,820	20,057	2,685	18,138



Westminster Presbyterian Church  
Monthly Percent of Pledge Income To Total Pledges  
2008 as compared to last year

