



Emanuel's Lutheran Church
206 North Travis Street
Seguin, Texas 78155

NON-PROFIT ORG.
U.S. POSTAGE
PAID
Permit No. 80
Seguin, Texas
78156-1049

Return Service Requested

Emanuel's Mission Statement

To proclaim God's grace through Word and Sacrament, and to bear witness to God's Kingdom in our daily lives.

Get in touch with us!

Phone:
(830) 379-5046

Fax:
(830) 379-7518

E-mail:
info@emanuels-seguin.org

Catch us on the Web!
www.emanuels-seguin.org

Worship Services
8:00 a.m.
&
10:30 a.m.

Congregational Leadership

Staff

Pastor	The Rev. Paul J. Zwarich
Pastoral Assistant	Willie Spreen
Hospital Visitation Pastor in San Antonio	The Rev. Darwin Huartson
Director of Music & Worship	Thomas Engler
Administrative Assistant	Jeannie Hall
Desktop Publisher/Secretary	Bonnie Cheatham
Day School Director	Burlene LeClair
Nursery Coordinator	Heidi Koepsel
Wedding Coordinator	Dee Dee Burns

Congregation Council

Natalie Alexander	John Baumann
Evelyn Dittmar (Secretary)	Denise Hufnagl (Vice-President)
Brian Jones	Toni Ludzenski
Marivel Medina	Roland Naumann
Ronald Naumann (President)	Christa Nichols
Jeanne Palmer (Treasurer)	Aaron Seidenberger

Worship Services & Events

February 7, 2010	8:00 and 10:30 am Worship Service/ Holy Communion/Hunger Sunday/ Boy Scout Sunday 9:15 am Sunday School/ Confirmation Class/ELYO
February 14, 2010	8:00 and 10:30 am Worship Service/ Holy Communion 9:15 am Sunday School/ Confirmation Class/ELYO 9:15 am Altar Guild 5:00 pm or 6:30pm Seating for the Valentine's Dinner hosted by ELYO
February 15, 2010	Church Office Closed
February 17, 2010	12:05 pm Ash Wednesday Service 7:00 pm Ash Wednesday Service
February 21, 2010	8:00 and 10:30 am Worship Service/ Holy Communion/ 9:15 am Sunday School/ Confirmation Class/ELYO
February 28, 2010	8:00 and 10:30 am Worship Service/ Holy Communion 9:15 am Sunday School/ Confirmation Class/ELYO

From the Pastor

At the January Congregational Council Meeting the following members were selected as the 2010 Executive Officers: **Ron Naumann** as Council President, **Denise Hufnagl** as Vice-President, **Jeanne Palmer** as Treasurer, and **Evelyn Dittmar** as Secretary. Please pray for and support our 2010 Executive Council Leaders.

On February 17 we will begin our 2010 Lenten Journey. To assist in our on-going spiritual journey, I am asking everyone to fill out the "**Lenten Commitment Form**" to pledge to attend as much as possible the Sunday and Wednesday Services that are being held this year. On February 14, Transfiguration Sunday, and February 21, First Sunday in Lent, we will be collecting the pledges in the Narthex before the Worship Services and we will be presenting them to the Altar during the offering. Please consider making the commitment to faithfully attend the Lenten Services.

As we approach the Lenten Season let us remember the "Good News" Jesus proclaimed: "*The time is fulfilled, and the Kingdom of God has come near; repent and believe in the "Good news."*" (Mark 1:15) May this season prepare us for the celebration of the death and, above all, the resurrection of our Lord and Savior, Jesus Christ. Amen.

cut along line

My Lenten Commitment

I believe the Lenten Season is a gift from God's calendar that affords me an opportunity to grow in my faith and to better realize the precious price of my salvation that Jesus paid for me in His suffering and death upon the cross.

In view of this, I plan to make my faithful attendance at God's house a critical and climatic part of this Holy Season. As I sign my name below, I commit myself to attend God's house faithfully each Sunday and to attend the Mid-Week Services faithfully for my own spiritual growth and as a testimony of my faith to others. It is understood that sickness or other life crises, might cause me to altar this commitment, but I shall make every effort to be faithful as God gives me strength.

Name: _____

cut along line

See You In Church

Pastor Paul

From Willie's Desk

How fascinating for me personally at this time. I will be preaching soon and as I research the text, I read the text about Jesus telling Peter, a seasoned fisherman, where to cast his nets. As you recall, Peter, at first objects telling that he has fished all night and caught nothing. As Peter and his partners were filling their boats with the catch, Jesus tells Peter that he will be a catcher of people.

Now back to me, It's also preparing for the 2nd session of the Outreach Academy and I've been reading the book "A Story Worth Sharing." The editor Kelly Fryer, shares with us that "god selects, shapes and sends ordinary people" to do His work. For example, God chose Abram and Sarai to take on a new identity and parent a new people. Read Genesis 12-17 for the whole story. As they began this new adventure God even changed their names. They were simple ordinary people yet God blessed them and they then became a blessing to others, even as a descendant was later born to be the Savior of the world.

You and I hereby have this opportunity here in Seguin, to tell others of how much God has done for us. Recently Esther and I went to What-a-burger and while eating we had a conversation with a stranger. When we had finished eating and proceeded to leave we could share God's blessing.

Try it, you might like it.

Willie

Pre-school and Elementary Sunday School



In Sunday School we not only learn songs and Bible stories and memory verses, but we also experience the joy of sharing through our offerings. Our December, January, and February offerings will purchase a piglet for a family in a third world country who wants to establish a farm.

Our **3's and 4's** meet in Room 215A for songs, then enjoy their Bible story with Ms. Lynda Ploetz and Ms. Meredith Huser. In February the children will be learning about God's love for us and our love for each other.

Children in **Kindergarten – Second Grade** also meet in Room 215A for singing. They then form a circle for a Godly Play story. This is a quiet, worshipful time which includes a time of wondering, inviting children into the story by their responses and questions. In February we will complete the study of the parables and begin the study of the life of Jesus. During the response work time children choose among Godly Play story trays, puzzles, journals, books, and art materials. A newer center provides beads of liturgical colors for making a Calendar of the Church Year necklace or bracelet. The last few minutes of the class are for a "feast", prayer, conversation, and a blessing.

Students in **Grades 3- 6** meet in downstairs Room 103 A,B with Cindy Schrank and Jane Foreman who plan great interactive lessons. February lessons will be "Healed by Jesus."

You are invited to come....to bring children, grandchildren, nieces and nephews, neighbors and friends.

PRAY FOR OTHER CONGREGATIONS!

Each congregation in our San Antonio Conference is being asked to remember other congregations in prayer through the year, and all have been sent a schedule of weeks in which to pray for a specific congregation. We will be remembering these congregations in our prayers each Sunday, and you are asked to keep them in prayer through the week.

Those for whom we pray in February.

February 7, 2010 Iglesia Luterana San Lucas, Eagle Pass
 February 14, 2010 Christ, San Antonio
 February 21, 2010 First, Floresville
 February 28, 2010 Gethsemane, San Antonio

Lectionary Readings for February 2010

Date	First Reading	Psalm	Second Reading	Gospel
Feb. 7	Isa. 6:1-8 [9-13]	Ps. 138	1 Cor. 15:1-11	Luke 5:1-11
Feb. 14	Exod. 34:29-35	Ps. 99	2 Cor. 3:12—4:2	Luke 9:28-36 [37-43]
Feb. 21	Deut. 26:1-11	Ps. 91:1-2, 9-16	Rom. 10:8b-13	Luke 4:1-13
Feb. 28	Gen. 15:1-12, 17-18	Ps. 27	Phil. 3:17--4:1	Luke 13:31-35

Financial News

Comparative Financial Report – December 31, 2009

Assets & Liabilities At December 31

Assets:	2008	2009
Money Market Funds	246,001	246,135
Less: Borrowings Against Money Market Funds to Support Operating Shortfalls	(78,984)	(95,993)
Net Remaining Money Market Funds *	167,016	150,142
Endowment Funds	371,461	353,196
Total Assets	538,478	503,337
Liabilities:		
Current Cash Deficit	(1,436)	(16,361)
Loan at Mission Plus for A/C & Heating Unit	-	-
Loan at Mission Plus for Alexander Property	-	-
Total Liabilities	(1,436)	(16,361)
Net Assets	\$ 539,914	\$ 519,698
Increase/Decrease in Net Assets		\$ (20,216)

Income Statement Through December 31

	2008	2009
Operating Income	469,793	517,423
Operating Expenses	473,522	519,507
Net Operating Loss	\$ (3,729)	\$ (2,084)

** Note - For clearer disclosure Money Market Funds used to finance church operations due to shortfalls in giving are shown netted against the original amount of Money Market Funds. Thus "Net Remaining Money Market Funds" are the actual amount of funds remaining on deposit with the bank as of that respective date.*



If you need to reach the church Sunday mornings during worship service, please call the church phone number (830) 379-5046 and after the recording please dial extension 214. This phone will ring in the usher's room in the Narthex.

WELCA

The Emanuel's WELCA Annual Lunch meeting was held Wednesday, January 20 in the Women's Ministry Room. Offerings were designated to Lutheran World Relief- Haiti Earthquake Relief. A program on LWR in El Salvador was presented by Clarie Streng-Broste.

Ladies Aid will host the first Lenten lunch on Wednesday, February 24 in the Women's Ministry Room after the noon service.

Anyone wishing to participate in Lutheran World Relief Parish Projects (quilts, school kits, health kits, etc.) should note that kits and quilts will be boxed up at Emanuel's on Saturday, March 27. For details on what goes into each kit check out this web site: www.lwr.org/beinvolved/index.asp

Emanuel's will host the San Antonio WELCA Conference on Saturday, April 10. Look for more information next month.

Check the calendar for circle, Ladies Aid, and Altar Guild meeting dates.

Cathy Anderson
WELCA President

Women of ELCA have begun implementation of the **CHERISH THE CHILDREN** program by asking a member of Emanuel's to pray daily for a specific child of our congregation. Those willing to participate can draw a child's name and age from a basket at church and begin praying for that child daily. A list of suggested prayer petitions can be picked up with the child's name.

LADIES AID

Velma opened the meeting with a prayer and 21 members present. They made 43 visits to home-bound and shut-ins in November and December.

Pastor Paul presented the bible study on Romans 8 "Nothing can Separate Us".

Ann recognized the birthday ladies and anniversary couples. Beulah read the minutes and correspondence and Judy gave the treasurer's report. Bazaar funds were slightly less than last year. Committee reports were heard.

Velma thanked all who were involved with the bazaar, Maxine for organizing our Christmas luncheon and to Ann for lining up a delightful program for Christmas luncheon.

Velma announced that our year books were ready to be picked up.

Ann and Maxine will audit the books. The ladies voted to reimburse the church for paper products used throughout the year. Mae Gerdes was the recipient of the door prize.

Velma thanked Pastor Paul, Frances, the hostesses, and the property stewards for setting up for us today.

Velma reminded the ladies of the Epiphany Celebration on Wednesday January 6th at 7:00 pm in the Fellowship Hall. Also the installation service for church women will be Sunday, January 17th at both services.

The meeting adjourned with the Lord's Prayer and singing "God Be With You Till We Meet Again."

Velma Huebner
President

Ladies Aid

Wednesday, February 3, 2010 at 2:00 PM
Hostesses: Betty Fischer,
Kathleen Boeder

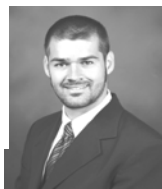
Altar Guild

Sunday, February 14, 2010 at 9:00 am
In the Hospitality Room

Church Women United Human Rights Celebration

The Human Rights Celebration sponsored by CWU that was cancelled in December has been rescheduled for Thursday, February 4, at 10:00 am First Presbyterian Church in the sanctuary. Elizabeth Jandt and Barbara Effenberger from Emanuel's will be recognized for their services on behalf of children and needy families.

 **Thrivent Financial for Lutherans™**
Where Values Thrive™



Please allow me to introduce myself. My name is Josh Bauman. I am one of the Thrivent Financial representatives serving Emanuel's Lutheran Church. I will be **working at Emanuel's Lutheran on Thursdays** and enjoy the opportunity to provide local, personalized service to Lutherans and their families.

Thrivent Financial for Lutherans is a Fortune 500 membership organization committed to helping members achieve their financial security and give back to their congregations and communities.

I am excited to be working with Emanuel's Lutheran Church and look forward to getting acquainted with many of you personally. I'm also looking forward to sharing information about the fraternal benefits that Thrivent Financial offers. If you have any questions about Thrivent Financial for Lutherans please feel free to contact me.

Josh Bauman
Financial Associate
(800) 880 – 1225

Faith Circle

will meet on
Tuesday, February 9, 2010 at 7:00 PM
Hostess: Beulah Reiley
Bible Study Leader: Cathy Anderson

Dorcas Circle

will meet on
Thursday, February 11, 2010 at 2:00 PM
Hostesses: Erna Bell Laughlin, Marie Vogel
Bible Study Leader: Annabelle Koehler

Joy Circle

will meet on
Thursday, February 11, 2010 at 9:30AM
Hostess: Jo Emily Prochnow
Bible Study Leader: Gloria Muehlbrad

Ring in the New Year with financial resolutions from Thrivent Financial for Lutherans

With the New Year comes the opportunity to improve your financial well-being. Here are five financial resolutions to get you started:

1. **Establish your 2010 financial goals**
2. **Establish a budget**
3. **Cut back on debt**
4. **Prioritize major purchases**
5. **Review your will or estate plan**

For help achieving your 2010 financial plan, contact Josh Bauman, Financial Associate, at (210) 735-1130, on Thursdays at (830) 379-5046 at Emanuel's Lutheran's Church or josh.bauman@thrivent.com



AMERICAN CANCER SOCIETY RELAY FOR LIFE

Celebrate.

Remember.

Fight Back.

Relay For Life is a life changing event that brings together more than 3.5 million people to...

Celebrate the lives of those who have battled cancer

Remember loved ones lost to the disease

Fight Back against a disease that takes too much.



Relay for Life Friday, April 23 and Saturday, April 24 at
Navarro High School

Music Ministry

Dear brothers and sisters of Emanuel's.

My article this month is just going to be one big note of thanks. Thanks for the way in which so many of you pitched and helped out during the Advent/Christmas cycle. With the change in staff here in the office, so much was left up in the air when it came to decorations in the nave and many other details that make for a smooth execution of a very busy season. Special thanks to the Boy Scouts and dads for their willingness to once again put up and take down our large but unwieldy tree. Thanks also to the many folks who stayed after late service on the 4th Sunday of Advent to help switch everything over from Advent colors and images to Christmas colors and images. The old saying is really true that "many hands make small work." Some of the same folks, plus some others stayed after late service on January 3 to reverse the process and get ready for the Epiphany season. As a result of all this help and the loving and enthusiastic spirit in which it was given, the month of December and the early part of January was a time of great joy and love, and again I thank you all for your generosity.

The whole season was given a crown of glory when, upon departure from the Epiphany service, one of the members expressed how much he loved his church and the activities contained therein. His parting words were something to effect of "after all, this is my village!" Such expressions make me feel that all the effort is worth it. Let's all take part in our village's life and keep it healthy and glowing with love and happiness.

Tom Engler
Director of Music and Worship

NOTICE

The Church Staff meets every Tuesday, from 2:00 pm to 4:00 pm. The phone will be set so that you can leave us a voice message, and we can respond when we are done.

"Working Wednesdays"

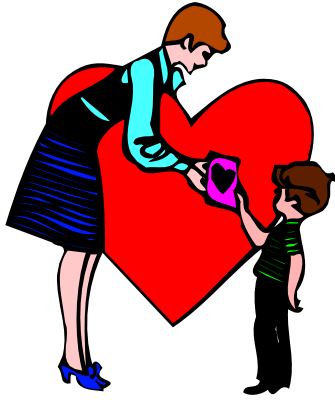
February 3, 2010	6:15 pm	Executive Council
February 10, 2010	6:15 pm	Congregation Council
February 17, 2010	6:30 pm	All Committee Night

STRENGTHENING OUR FAITH THROUGH FOOD, FUN, AND FELLOWSHIP

Singles Group will meet again
in February 2010
Please watch for details.

DEADLINES

Information must be in the office by 8:00 am Tuesday, mornings for bulletins. Newsletter information must be in the office by the 15th of each month.



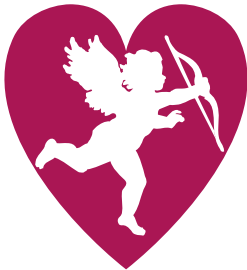
Day School News

February's special event for the children is Valentine's Day, of course! It's fun to see it through their eye. If you mention anything such as kissing, cupid, boyfriend or girlfriend, you will get a response of, "e-e-e-ew, icky" from a preschooler. Valentine's Day to them is a chance to tell their moms, dads, grandparents,

and friends how much they love them with the symbol of a heart. Art projects, decorating sugar cookies, and exchanging friendship cards are popular activities right now at the school. Since we all can use a little love, it's nice to be surrounded by children. ☺

The two year old class is bursting at the seams thanks to the wonderful care that their teacher gives them, which is readily communicated to parents by their child. The school now has three classrooms of happy children as the teachers guide their spiritual, intellectual, social, and emotional development. I bet those teachers get lots of hugs and hearts this month! Those are a few of the wonderful things about teaching!

We wish you a Happy Valentine's Day!!!



Valentine's Dinner

Hosted by

Emanuel's Lutheran Youth Organization
Friends, family, and loved ones welcome!

ELYO is pleased to be hosting the 11th Annual Valentine's Dinner!

DATE: Sunday, February 14, 2010

PLACE: Emanuel's Fellowship Hall

SEATING: 5:00 pm and 6:30 pm

MENU: Spaghetti with Meat Sauce, Garden Salad, Green Beans
Garlic Bread, Cherry Cobbler, Tea or Coffee

Free-will donations accepted for food, service, and entertainment. Proceeds to benefit Emanuel's Lutheran Youth Organization.

Come enjoy an evening of fine dining and entertainment. Nursery care will be provided if requested in advance. A light snack will be provided.

Please support the Senior High Youth of Emanuel's by making your reservations today. For reservations, call Bonnie in the church office at 379-5046, Deadline is Tuesday, February 9.



Yes, I'm coming to the ELYO Valentine's Dinner.

Name (please print) _____ Total number in your party _____

Phone number (day) _____ (evening) _____

Seating desired (please circle one): 5:00 pm 6:30 pm Number of children needing nursery care _____

Thank you for supporting the youth of Emanuel's.



THANK YOU!

With Gratitude, Your kindness was an answer to my prayers. Just as Freddie was trying to work the micro-wave the doorbell rang and the answer to his prayer was there. I was in the hospital and it couldn't have come at a better time. The meal was delicious. Thanks Again.
Thank you all for your thoughtfulness.
Freddie and Glendora Ewald.

Thanks for the philatelic material you sent November 13. We are very pleased that you thought of us and are willing to take the time to collect and send it. We hope you can continue to do so. All material is welcomed. We certainly want to carry on our work with Stamps for a Living at St. Elizabeth's Hospital, and with the handicapped people who benefit from the efforts of the Deaf/Reach program. Both programs are aided by the sale of your donations. With your help, we should be able to do so for many years to come. Bless You!

Sincerely,
June P. Heinz
Church member and Stamp Collection Volunteer

Habitat for Humanity would like to thank you for your Gift of \$750.00 on January 6, 2010.
Thanks for your continued support!

Dear Friends:

On Behalf of Texas Lutheran University, I want to thank you for the gift of \$1,200.00. Your continuing support of the Congregational Aid Program makes a difference – helping TLU prepare a new generation of leaders for service in the world.

Only through the generosity of donors like you can Texas Lutheran continue to provide this vital community of faith and learning –this wonderful place where students thrive, mature and go forth to serve the common good.

Thank you again for your contribution and your partnership with Texas Lutheran University. Together, we are making a difference in the world.

Sincerely,
Nancy J. Hershfield
Vice-President
Development and Alumni Relations

*Thank you and
blessings in the
New Year!*

Dear Friends,

Thank you for supporting the mission and ministry of LWR by purchasing gifts from the LWR Gifts catalog. Your thoughtful and caring choice will improve the lives of impoverished people around the world.

As the global food crisis continues and the effects of climate change loom, your brothers and sisters around the world need your support and your prayers. By choosing to give through LWR Gifts, you have answered God's call to love and care for your neighbor by giving them an opportunity to earn income, grow food, and improve lives.

We encourage you to see how your gift is working to transform lives around the world. Please visit www.lwr.org to see pictures and read stories about how you help improve lives and strengthen communities in the 35 countries where LWR works. We're also happy to answer any questions you have by calling 800-597-5972 or by e-mail at lwr@lwr.org.

On behalf of all of at LWR, and those we serve around the globe... thanks so much for your generous and thoughtful purchase and gift of \$1,430.00.

In Christ's peace,
John A. Nunes, President and CEO

The family of Robert Stillens acknowledges with deep appreciation your kind expression of sympathy.

We, the family of Robert (Bob) want to express our heartfelt thanks to all the friends and brethren in faith who lifted us in prayers and gave their spiritual support during his illness and time of sorrow.

Sincerely,
Sara Stillens

Dear Pastor Paul and members of the Council,

Thank you very much for your generous gift of \$500.00 for Lutheran Campus Ministry. We appreciate your generous support of Lutheran ministry with college students in Austin.

These continue to be very uncertain economic times, perhaps particularly for ministries of the ELCA. We are even more grateful and feel extra blessed by your gift this year. Lutheran Campus Ministry and I are proud to be part of a Lutheran tradition so committed to students and ministry in Higher Education.

We continue to worship each Sunday evening using Evangelical Lutheran Worship, Holden Evening Prayer, Unfailing Light and Now the Feast and Celebration. "Word and Sacrament" guide and center us.

Lutheran students practice Lutheran hospitality for many visitors at our Wednesday night dinners. The Sola Gratia intramural sports volleyball team's Fall record was 3 wins to 1 loss! They have fun and build community while giving a Christian witness on campus. LCM students make new acquaintances on the West Mall weekly as they (we) sell Lutheran World Relief Fair Trade Chocolate. You have helped make all of this possible. God is good!

Best wishes for a Blessed New Year, and thanks again for your generosity.

In Christ,
Paul Collinson-Streng

*Thank you, Pastor
Paul & friends!
Paul*

Our Congregation



The Families of

Jocelyn Schultze
 Robert Stillens
 Lenora Mielke
 Dale Walker
 (Uncle of Thomas Hall)
 Hildegard Oehler
 Alpha Heider
 Lester Larson
 Marvin Schuchardt

Prayers requested Members

Annie Boecker, Glendora Ewald, Elizabeth Lange,
 Daniel Heideke, Chalene Green, Laura Merz, C. O. Meyer,
 Francine Pidgeon, Lola Scheffel, Marian Strey,
 Barbara Tschoepe, Marie Vogel,
 Esther Spreen and Erline Sanders

Friends & Family

Mary Alexander, Joy Baker, Debbie Baumann, Betsy Coker,
 Mac Clopton, Donna Ethridge, Roy Head, Larry Hartman,
 George & Vivian Grein, Aline Lindemann, Karen Olson,
 Charmaine Miller, Misty Miller, Linda Mosley,
 Delores McCaskill, Doris Oerlti, Robert Shannon,
 Jessica Stevens, Lillian Sadowski,
 David Van Houten and Rebecca Van Buren

Our Family and Friends in the Military



Jarett Carroll, Randy Johnson,
 Darrell McCall, Ben Russell, Stephanie Tovar,
 Michael Sullivan and Derek Schulz

 **Thrivent Financial for Lutherans®**
Let's thrive!

What makes us different is what makes us strong.

We're a faith-based, not-for-profit financial services organization with approximately 2.6 million members. For more than a century, our blend of financial expertise, shared values and outstanding service has set us apart.

To learn more, call today!

David Luckemeyer, ChFC, FIC
 Financial Consultant

Guadalupe Valley Associates
 468 S Seguin Ave, Ste 400
 New Braunfels, TX 78130
 830-625-0207 office
 800-665-0207 toll-free



Appleton, Wisconsin • Minneapolis, Minnesota • Thrivent.com • 800-THRIVENT (800-847-4836)

25640GEN NS-09

Thrivent.com

200902673

a reminder:

March 2, 2010 at 1:30 p.m.
 Toast to Texas
 at the

Sebastopol Historical State Park

Emanuel's will be sounding the
 Bells along with other Church's.