

## A Short History of Westminster's Buildings

In 1857 eight people gathered to organize Westminster Presbyterian Church. By the time the congregation dedicated its first building in 1861 there were 43 members. This building was located on 4th Street between Hennepin and Nicollet Avenues.

A second building was built between 1880 and 1883 at 7th Street and Nicollet Avenue to accommodate the growing congregation. A fire, possibly caused by a recent conversion to electricity, destroyed the building in 1895.

Westminster's current sanctuary building was designed by the architects Sedgewick and Hayes and dedicated in 1897. Various parts of the complex were added in 1937, including the Great Hall and chapel. The Marquette wing was designed by Francis Bulbulian of Leonard Parker Associates Architects and built in 2002. The chapel was restored and additional spaces were built as part of the 150th Anniversary in 2007, including a courtyard, memorial garden, classroom, and a center for art and archive processing and storage. Mike Collins of Meyer Scherer & Rockcastle, Ltd. was the architect and Coen Partners were the landscape architects.



### **The Birth of Freedom**

by sculptor Paul T. Granlund, 1977  
(Located on Nicollet in front of the church)

based on Galatians 5:1, *Stand fast, therefore, in the liberty wherewith Christ hath made us free, and be not entangled again with the yoke of bondage.*

### **Westminster Today**

Westminster is a vibrant and growing congregation of 3,000 members. The church's ministries include Worship & Music; Pastoral Care; Faith in Action; Evangelism & Fellowship; Children, Youth & Families; and Adult Education & Leadership Development.

The music program includes adult, youth, children, global, and African choirs. This music ministry is further

enhanced by adult and youth handbell choirs and a youth orchestra.

We support and engage with the local community through the Westminster Counseling Center, Town Hall Forum, Westminster Gallery and many community partnerships. We sponsor Boy Scout Troop 33 (since 1919) and Hmong Troop 100 (1981.) The Scouts and our youth enjoy Westminster's Camp Ajawah, located 30 miles north of the Twin Cities.

We have global partnerships with Presbyterian churches and seminaries in Brazil, Cameroon, and Cuba.

For information regarding membership, programs, or activities at Westminster, please visit our website: [www.ewestminster.org](http://www.ewestminster.org)

We are a member of the Presbyterian Church (USA.)

## All are Welcome

### **Sunday Worship Services**

*September - May: 8:30AM & 10:30AM*

*June - August: 10:00AM*

**Sunday Communion Service 9:30AM** in the chapel

**Free Parking** is available on **Sunday mornings** in the Orchestra Hall Ramp at Marquette Avenue and 11th Street, on **evenings & weekends** in the Wells Fargo underground ramp on 13th Street, between Nicollet and Marquette. A surface lot is located off Marquette Ave. between 12th and 13th Streets.

### **Westminster Presbyterian Church**

1200 Marquette Avenue

Minneapolis, MN 55403-2469

612.332.3421 [www.ewestminster.org](http://www.ewestminster.org)

### **For additional information or to schedule a tour:**

Rodney Allen Schwartz

Director, the Westminster Gallery and Archive

612.332.3421, ext. 227 or [rschwartz@wpc-mpls.org](mailto:rschwartz@wpc-mpls.org)

## Mission Statement

In response to the grace of God through Jesus Christ, the mission of Westminster Presbyterian Church is

- to proclaim and celebrate the Good News of Jesus Christ;
- to gather as an open community to worship God with dignity and joy, warmth and beauty;
- to nourish personal faith through study, prayer, and fellowship;
- to work for love, peace and justice;
- to be a welcoming and caring Christian community, witnessing to God's love day by day;
- to work locally and beyond with our denomination and the larger Christian Church; and
- to be a *Telling Presence in the City.*

### *The Open Door Logo*



by Gordon A. Schlichting  
1979



1980s



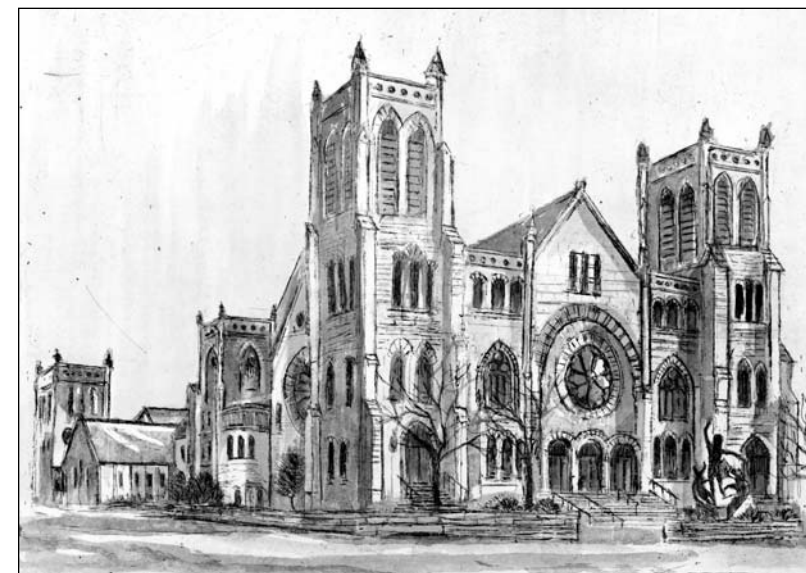
1990s



Current

# Westminster Presbyterian Church

**Founded in 1857**



*Westminster*, by Stephen E. Chase, hand-tinted etching, 2004

## A Self-Guided Tour



**The Sanctuary** was built in 1897 in the Akron style and seats 1,500 people. Consistent with the Presbyterian commitment to Word and Sacrament, the focus is on the pulpit and communion table. This circular design affords clear sightlines and creates a sense of community and warmth. The sanctuary underwent a major restoration in 1998 and is listed on the National Register of Historic Places.

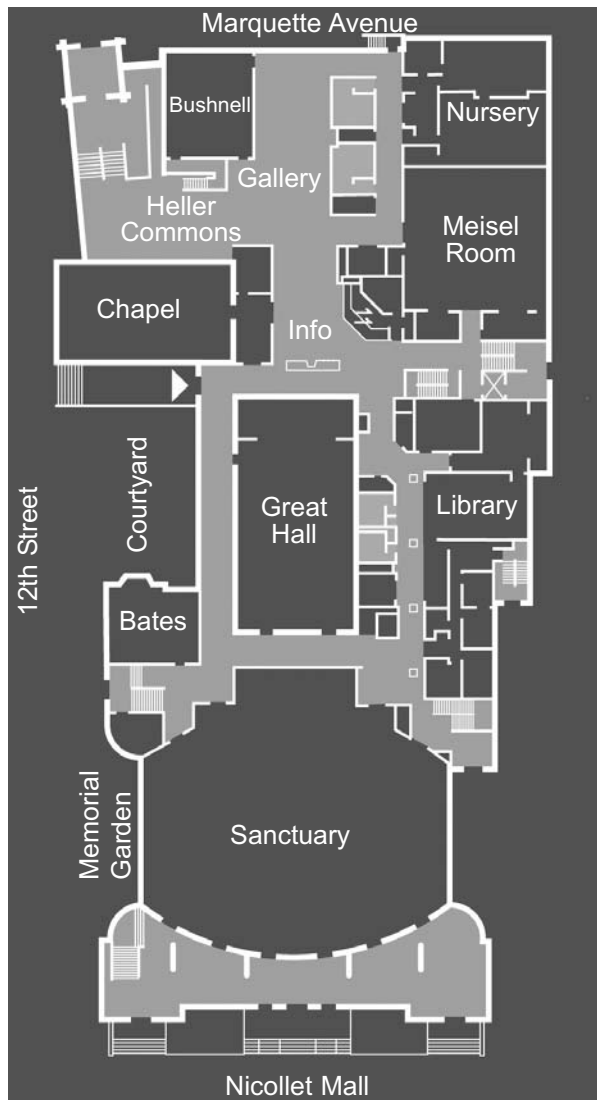
The 16th century Presbyterian Reformation in Scotland removed religious symbols and icons from worship and the church. By the 1930s attitudes about imagery changed; the Celtic Cross was installed and the original windows were replaced with stained glass several decades later.

**The Stained Glass Windows** at Westminster portray a variety of Christian symbols and stories. The rose window at the back of the balcony is original to the building, as is the skylight featuring a Jerusalem Cross. The *Guardian Angel Window* (to your left when facing front) was designed by Charles J. Connick of Boston. The *Glory Window* (to your right) and all other windows were designed by the Willet Studio of Philadelphia and were installed in the 1950s and 1960s. For additional information, see the book *The Art of a Building*, which is available at the reception desk.

**The Möller Organ** dates from 1980 and retains some of the pipes from a 1926 Kimball, notably wooden pedal *bourdon*. The 4-manual, 85 rank instrument has nearly 5,000 pipes.

**New History Book** *Living Faith, Stories from the first 150 years* was written in 2007 and provides insight to the history and life of the congregation as a *Telling Presence in the City*.

## Westminster's Main Floor Plan



**Sermon on the Mount**  
(stained glass window detail)



**The Seven Days of Creation**  
(detail) by Peter Lupori, glazed terra-cotta, 1981  
(located between the sanctuary and Great Hall)

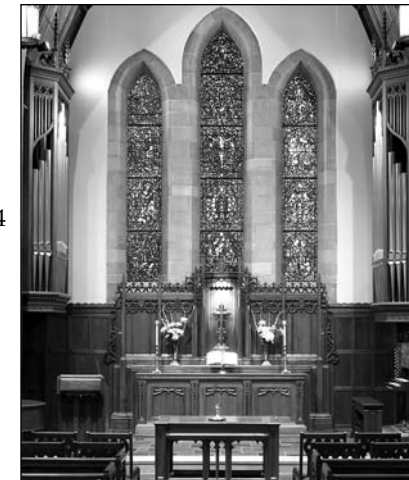
**The Westminster Gallery** features art through regularly changing exhibitions which evolve from the themes suggested by the liturgical calendar and the world around us. The art exhibited in the gallery and around the building reflects Westminster's diverse congregation and community by featuring the work of regional and international artists and collectors, as well as our own permanent collection of art and artifacts.



**Finding Moses**  
by Chinese artist He Qi  
gouache on rice paper, 2004

**The Chapel** was built in 1937 in the Gothic style, seats 175, and is the most frequently used worship space. The chapel was renovated in 2007 as part of Westminster's 150th Anniversary. Lynn Dobson Organ Builders of Lake City, Iowa, built the mechanical organ in 2008. Dobson's *Opus 86* is a versatile 2-manual instrument, comprising 24 ranks and 1,406 pipes.

**The Great Hall**, also built in 1937, hosts concerts, receptions, dinners, and more. The 12 heraldic banners feature historic crosses and were designed and made by Jan MacFarlane.



**The Westminster Chapel**

**The Lowe Library** is named for Dr. Arnold Lowe (Senior Pastor from 1940 to 1965) and Mrs. Braddie Douglas Lowe. It is based on the 1910 designs by the Prairie School architects Purcell, Feick, and Elmslie and was renovated in 2008. The Lowe and the Children's Libraries serve as reading rooms, reference and lending libraries.



**Nepali Crèche** (detail)

**The Martha Spencer Rogers Crèche Collection** is located on the second floor of the building near the church school rooms. This impressive collection is the 2003 and 2008 gift of Westminster member Martha Spencer Rogers and consists of more than 190 hand-crafted folk-art crèches from over 80 countries. The collection continues to grow, reflecting Westminster's ethnically and culturally diverse congregation.