

# INSIDE GRACE

## WORSHIP SERVICE TIMES

8:30am, 10:00am\*, 11:30am, and 6pm

\* Signing for the deaf and hard of hearing is available at the 10:00am service

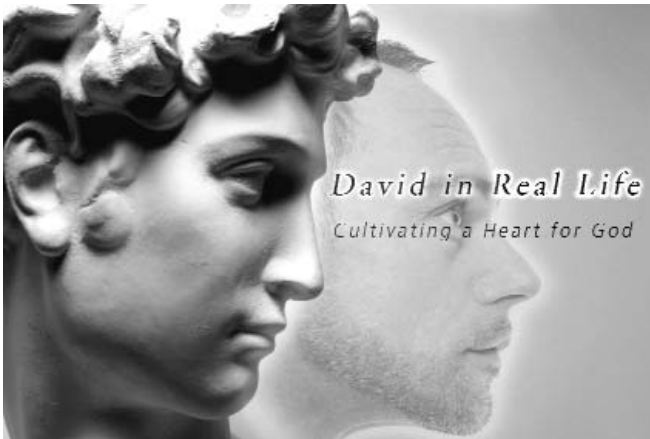
Weekly radio broadcast (one-week delay) each Sunday at 9:30am on 590AM

**May 11, 2008**

## WELCOME!

**If you are a first-time guest**, please fill out a Connection Card and place it in the offering plate or give it to a pastor or usher after the service. Be sure to stop by the Visitor's Center where you will find a friendly team ready to assist you.

**If you would like to talk or pray** with someone about a spiritual need, please feel free to come to the Chapel. Prayer ministers are happy to meet with you.



*"Then David accepted from her hand what she had brought him and said, 'Go home in peace. I have heard your words and granted your request.'"*

1 Samuel 25:35 (NIV)

## Message

*"Beauty and the Beast"*

1 Samuel 25

(Page 287 in the pew Bible)

Tom Van Antwerp, Pastor of Community Care

## THINGS YOU NEED TO KNOW

(more inside)

**Annual Meeting** is Sunday June 1.

**Summerfest** is Sunday June 8. Tickets are now on sale.

**Baptism Class** is Sunday May 18.

---

# Today at Grace

**Grace at a Glance** gives an overview of Grace Chapel's ministries and opportunities for growth, service and outreach. It is available in the Visitor's Center and in the brochure racks in the lobbies.

**Shuttle Bus Service** Door-to-door service on Sunday mornings! From 7:30am to 1:30pm buses pick up and drop off in the following places: *Lexington High School Lot* (both front and back lots), *Fire Station Lot* - park in the lots behind the Fire Station and hop on the shuttle in the parking lot in front of Neillio's (please do not park in the Neillio's lot).

**Adult Discipleship Courses** Available courses and locations listed below. For full course descriptions pick up a Discipleship and Spiritual Formation brochure in the lobby or at the Registration Desk today. Courses take place at the Adult Learning Center at 2 Militia Drive unless otherwise noted.

## Sunday 10:00am Courses

**Is "I Do" For You?** Florence & Chris Lee, Paul & Patty Bareford, Room 101

**Following Jesus: Discovering His Leadership and Lordship** Ruth Brigham & Doug Whallon Room 205

**ALPHA: What Is the Point of Life?** Bob Fantasia, Pam & Jack Bickel, Steve Harrington, Bill Long, Room 103

**Foundations** Wendy & Rink Jacobi, Carol & Doug Mostrom, Room G-4

Jim and Deborah Ennis, Room 105

**Digging into the Gospel of Mark: What Did Jesus Do?** Tim & Paula Castner, Lisa Gerdes, Steve and Jackie Hamilton, Room 102

**Scientific and Christian Perspectives on Creation** Walter Hicks, Gary Thorburn, and guest speakers, Room 201

**Genesis: A New Look at an Old Book** Ben Bythewood, Room G-2

**Influential Leadership** Cynthia Fantasia & Team, Room 202

## Sunday 11:30am Courses

**The Promises of God: Bold Scripture for Bolder Living** John Schoenherr, Jack Richardson, Room 202

**Transform: Welcoming God's Presence and Growing Process into Our Lives** Doug Whallon & Team, Room 102

**Implications of the Resurrection: Lessons from the Early Church** David Stephens, Room 101

**Deaf Adults** Buddy Shephard & Team, Room G-4

## Sunday 5:00pm Course

**The Sermon on the Mount** Roy Ciampa, Room 104, in the Community Life Center at 59 Worthen Road.

**Sunday Youth Programs** take place at 10am every week in the upper level of the Community Life Center.

## Sunday Programs for Children at Kidstown!

**8:30am** Childcare for birth through age 5

**10:00 and 11:30am** Kidstown programs for kids from birth to Grade 5  
(go to Kidstown to register your child for Kidstown programs)

**6:00pm** Childcare for birth through age 5

There is a **Mothers' Room** for nursing mothers and crying babies in the Infant/Toddler Wing of Kidstown outfitted with comfortable chairs and closed-circuit television broadcast of the service. *For help on Sundays, visit the information desk in Kidstown.*

## Worship Service Styles:

**8:30am with choir and orchestra.** This service, grounded in the traditional elements that have served the church well for so many generations, includes some creative and contemporary elements that will enhance the message.

**10:00\* and 11:30am with choir, band and orchestra.** This service will emphasize contemporary music and the worship arts, while still drawing upon some of the timeless elements of traditional worship. *\*Signing for the deaf and hard of hearing is available at 10:00am.*

**6pm (gc@night) with band and vocalists.** This high-energy experience is designed to connect with people who are looking for an edgier alternative to Sunday morning. This will feature the same message as Sunday mornings, in a more casual and spontaneous atmosphere and will sometimes include "Talkback Time."

---

## NOTES

---

---

# Events

At the Registration Desk

## **Summerfest: 10th Annual Church Picnic** June 8, 12:30 - 4pm.

Summerfest is back with games, inflatables and food at Hastings Park (the Gazebo field). This year's events include: Open Air Painting, and the Creative Dessert Contest as well as the following new events: Parent-Child Softball Games, Pie-Eating Contests and a Flower-Arranging Contest. Information on all of the contests and tickets for Summerfest (\$8 each) are available at the Registration Desk.

## **Vacation Bible School: "Power Lab Discovering Jesus' Miraculous Power"**

Monday, June 23 to Friday, June 27, 9am to 12 noon A week-long, hands-on learning experience where kids enjoy games, drama, crafts, snacks, and worship. Come celebrate, & experience the high-energy faith-filled fun this summer. Registration is open at the Registration Desk today. Or you may go to [www.grace.org/children](http://www.grace.org/children). Volunteers wanted! More information in the "Serve" column in the right panel of Inside Grace.

**Women's Bible Studies for Fall 2008** Brochures and registration forms are available at the Information/Registration Desk for: Morning Joy (childcare provided) and Evening Joy - both on Tuesdays and for Mom to Mom (childcare provided) on Thursdays. For more information go to [www.grace.org/women](http://www.grace.org/women) or contact Carolyn at [carolyn@grace.org](mailto:carolyn@grace.org) or 781-862-8351 x149. *Programs offering childcare fill up quickly - register early.*

**Special Missions Potluck Luncheon** Please join us on Sunday, May 18, at 3:30 in Fellowship Hall to welcome George Chavanikamannil and Matthews Varghese, representatives from our Missions partner, *Good News for India*. George and Matthews will both share updates and stories with us pertaining to their current ministries in India. Please bring something to share. For more information, please contact LouAnn Stropoli: [lstropoli@comcast.net](mailto:lstropoli@comcast.net).

**Spring 2008 Baptism Class on Sunday May 18** For those desiring to be baptized, the class will take place at 10am in room 202 in the Adult Learning Center. The baptisms will be held at all services on *Sunday, June 22*. This class is a requirement for being baptized. Please email Carolyn Sylvester at [carolyn@grace.org](mailto:carolyn@grace.org) to let her know you will be attending.

*Middle Schoolers* interested in being baptized contact Brian Dietz at [bdietz@grace.org](mailto:bdietz@grace.org)  
*High Schoolers*, please contact Todd Szymczak at [todds@grace.org](mailto:todds@grace.org).

**Enjoy a Festival of Song** *Saturday, May 31, 7pm* at Grace Chapel. Celebrate the great hymns of our faith. There will be refreshments at intermission and after the program. If you would like to share your musical talent or for more information call Steve or Sandy at 781.874.0499.

**Spring Singles Conference** *May 23-26* At Monadnock Bible Conference Center "How to Stay Connected in a Disconnected World" with speaker Al Cabral. To register call Sue at 603.532.8321 or visit [www.monadnockbible.org](http://www.monadnockbible.org).

**Young Adult Retreat Weekend** May 16 to 18 for 20 or 30-somethings, single or married. Contact Jami Blackburn at [jamilyn1728@yahoo.com](mailto:jamilyn1728@yahoo.com) or Sooyun Chung at [sooyun.chung@gmail.com](mailto:sooyun.chung@gmail.com).

**MAPS goes to "Joseph and the Amazing Technicolor Dreamcoat"** *Saturday, June 14, at 2pm* All are welcome to come and Andrew Lloyd Webber's smash hit with the Reagle Players and a chorus of 70 children and singers and dancers. Mail reservations to MAPS, Grace Chapel, 3 Militia Drive, Lexington, MA 02421 by Monday May 19. Cost is \$32.00 per person. Brochures are available at the Registration Desk.

## **Upcoming Scheduled Grace Chapel Art Gallery Exhibit Call for Entries for:**

**BLUE** (*The color or feeling, you decide!*)  
Ages 18 & up May 25 - July 16, 2008

*Artist Registration:* Wednesday, May 14, 6-8pm or Saturday, May 17, 9am -12pm  
*Sneak Peak Reception:* Saturday, May 24, 4-6pm, Fellowship Hall.

*Poetry:* All ages submit BLUE-themed poems either to [artgallery@grace.org](mailto:artgallery@grace.org) by 5/17/08 or in person at art Registration dates listed above. Please post age if written by a student.

**Parents of Incoming 6th graders and Interested Volunteers** Please join Middle School Ministries on Sunday, May 18 at 10am in the gym to experience what we do in the Middle School Service and also to hear from Brian Dietz about being involved in this exciting ministry. Please contact Angela Rogers with questions at [angers@grace.org](mailto:angers@grace.org) or x131.

---

# Grow

**Tuesday Evening Institute.** TEI meets weekly from 7:15 - 8:30pm in Room 201 of the Adult Learning Center. Available courses include:

**Studies in I Corinthians** with *David Stephens & team, Room 201*

**Science and the Bible: A Christian Apologetic Approach** with *Steve Rabe, Room 205.*

**Celebrate Recovery** Are you at a place of defeat? Have you lost hope? We invite you to join us on the journey back to joy, freedom and hope. *Celebrate Recovery* is a Christian recovery ministry based on eight principles from the Beatitudes. It is a safe and confidential place to share your hurts, habits and hang ups. We meet for dinner, worship, teaching and sharing every Monday night of the year in Grace Chapel's Fellowship Hall (dinner is served at 5:30 pm)

**Just Show Up...** There is no need to register or sign-up. Simply show up each Monday night for more information, or contact Grace Chapel's Celebrate Recovery team at 781.862.8351 x2246 or CR@grace.org. Brochures with more information may be picked up at the Registration Desk.

**Childcare** for kids up to age 5 is provided. Please reserve a spot for your child by calling X2246.

**Singles Study "Prayer: Does it Make Any Difference?"** This study is based on the book by Philip Yancey. We meet the 2nd and 4th Fridays of each month at 7pm in Room 205 in the Adult Learning Center. Please contact JT Shupe for more information at jt@grace.org or at x123.

---

# Care and Connect

At Community Corner

**Connect at Grace at a LIFE Community** If you missed a Sunday or two, would anyone notice? Have you been coming and going to church with stealth precision, so that no one knows you? These groups meet in homes throughout the area (as close as Lexington and as far as Stow, MA, and Litchfield, NH!). It doesn't matter if you've just stepped in the door at Grace Chapel or if you've been coming for decades, consider joining a LIFE Community. For more information contact Elsie Kitchen at x2222 or email her at ekitchen@grace.org.

**The Family Connection** Join us each Wednesday evening for children's programs and LIFE Communities for adults. Dinner is served at 5:15pm in Fellowship Hall. Programs and LIFE Communities run from 6:30pm to 8pm. [www.grace.org/family](http://www.grace.org/family).

**GriefShare** is a support group for people grieving the death of someone. Upcoming meetings: May 19, June 2 and June 19. Call 781.862.8351, x2225 for more information.

**The Career Resource Group** meets to help those unemployed, underemployed, in transition or thinking about a job change. Meetings are held twice a month. One group meets the second Monday evening at 7pm in room 2-G02 and another group meets the fourth Tuesday morning of every month at 7:30am in room 2-101 in the Adult Learning Center. You can call 781.862.8351 x2245 to leave a message if you have questions.

**Divorce Recovery Group Starting in June** There will be a new Divorce Recovery Group, "Choosing To Heal," which will run from Wednesday, June 4 to August 27 on Wednesday evenings from 7:00 - 8:30pm in Room 102 in our Adult Learning Center at 2 Militia Drive. Registration will remain open through June 18. You may register the first time you come. You do not need to pre-register to attend. For further information or to receive a call back please call 781/862.8351 x2218.

At the same time we will be running a **Divorce Recovery for Kids** (elementary age) which will meet in Room G-02 in our Adult Learning Center at 2 Militia Drive. To register your child for DC4K please call 781-862-8351 x2217.

---

# Annual Meeting and Nominating Report

**Our Annual Congregational Meeting** will take place on Sunday, June 1, in the Sanctuary immediately following the 11:30am worship service. This is our opportunity to celebrate what God has done through the Grace Chapel ministry this past year and for our leadership to present our final financial results. We'll also look at the ministry year ahead and be given the opportunity to vote on our newly proposed budget and slate of officers (see below). All members and non-members are invited, but only members may vote. Understanding the overall ministry and participating in its governance is an important responsibility of members. Please attend! (Child care with lunch is available for children through age 5.)

---

**2008 Nominating Committee Report** The 2008 Nominating Committee is pleased to announce the following slate of candidates to fill the church governance offices, beginning in June 2008. The Board of Elders unanimously approved this slate in March 2008. The congregation will vote on this slate during the annual Corporation Meeting on June 1, 2008. Please direct any questions or comments to any of the members of the 2008 Nominating Committee. *Respectfully Submitted,*

*2008 Nominating Committee*

Brad Gardner, Elder Chair  
Cynthia Parker

Paul Bodet, Elder  
Ellie Beatty

Reg Gibson  
Rick O'Donnell

**Church Governance Office Slate**

**Elder (4-year term)**

Roy Ciampa  
Bob Landrebe  
Gary Thorburn  
David Ting

**Clerk (1-year term)**

Brooke Sulahian  
**Moderator**  
Rink Jacobi

**Audit Committee**

Mike Burd  
Sarah Shaw  
Larry Warfield

**Nominating Committee**

Audrey Wang (AE)  
Julie Schaffner  
Emanuel Tucker (AE)  
Steve Palmer (AE)

---

## Serve

**Vacation Bible School Volunteers** VBS is June 23 to 27. This year's theme is PowerLab – "Discovering Jesus' miraculous power." It takes hundreds of volunteers to make this outreach for children to happen – we're looking for 80 crew leaders to work with elementary kids. Please sign up at the Registration Desk today or go online and print out a volunteer form. The first volunteer staff meeting will be Thursday, May 22 at 7pm in Fellowship Hall.

**Angel Tree Prison Fellowship Children** Thank you to those who sponsored Angel Tree children to go to summer camp! With the help of scholarships from Camp Keswick and Camp Sentinel, between 15 and 20 Angel Tree children will go to a Christian camp this summer! If you would like to participate in this ministry by providing a child with camp supplies, please go to our table near the Registration Desk to learn how.

**ESOL Ministry Seeks Volunteers** Do you enjoy meeting people from other countries, helping them feel welcome in the US? If so, we invite you to consider joining Grace Chapel's English for Speakers of Other Languages (ESOL) ministry. ESOL is seeking volunteers to teach on Tuesday evenings for the summer session. Teaching experience isn't necessary. Please email us at [GraceChapelESOL@yahoo.com](mailto:GraceChapelESOL@yahoo.com) or call 781.862.8351 x2219 to learn how your gifts can support this exciting ministry! See our web page for more information at [www.grace.org/esol](http://www.grace.org/esol).

## Employment Opportunity

**Director of Communications**

We are beginning a search for a full-time staff member to lead our overall communications function. This individual will be responsible for developing and implementing our overall communications and public relations strategy. He or she will also be responsible for our visual image and branding, our web site and our print media.

Qualified candidates for this role will have skills and experience in these key areas and will also be able to recruit and equip teams of volunteers to support these vital ministry functions. For a complete job description along with information on how to apply for this position, go to [www.grace.org/employment](http://www.grace.org/employment).

# This Week

# General Info

**Monday**

Celebrate Recovery

**Tuesday**

Tuesday Evening Institute

**Wednesday**

Prayer Meeting

Family Connection

Middle School Ministries

**Thursday**

Alpha

FIRE (20s, 30s, married and single)

**Friday**

High School Ministries

**Grace Chapel Prayer Line** 781.862.8351 x2240 Listen to or leave prayer requests/praises. Updated daily except for weekends.**Sanctuary Flowers**

If you would like to provide flowers in memory or honor of someone, please contact the Worship Ministry at x170 or mblosser@grace.org

**CD recordings of today's sermon** are available in the south entrance lobby. You may listen online at [www.grace.org/audio](http://www.grace.org/audio).**DVDs of various recent events and series** are available at the Tape Desk for suggested donations. *This includes Easter 2008, Serious Times, Mike Timlin, Chuck Colson, John Ortberg, and the "Change of Heart" series.*

**Strong Year-End Finish** April 30 marked the end of our Fiscal Year. Thanks to you, we have ended the year in a strong financial position. Your giving this fiscal year exceeded the "core" element of our budget by over \$80,000. God is good and He provides for the Grace Chapel ministry through the generosity and faithfulness of His people. Thank you!

*The Grace Chapel Elders***May 1, 2007 - April 27, 2008****Ministry Operations Fund**

Core Need Year to Date:	\$6,460,487
Receipts to date:	6,543,953
Difference:	\$83,466

**CONTACT INFORMATION****781.862.8351****Ministry Staff.....Extension**

<b>F. Bryan Wilkerson</b> , Senior Pastor.....	136
<b>Bill Burke</b> , Executive Pastor.....	102
<b>Dana Baker</b> , Multicultural Ministries.....	135
<b>David Bennett</b> , Director of Media Ministries.....	171
<b>Dorian Botsis</b> , Pastor - Community Team.....	108
<b>Jason Bryant</b> , Middle School Ministry Assistant.....	106
<b>Barbara Burrill</b> , Early Childhood Director.....	114
<b>Kristin Bythewood</b> , Elementary Director.....	128
<b>Brian Dietz</b> , Pastor of Middle School Ministries.....	144
<b>Peter Dupré</b> , Pastor of Worship and the Arts.....	172
<b>Jim Ennis</b> , Pastor of Community Care.....	145
<b>Cynthia Fantasia</b> , Pastor of Service and Women.....	130
<b>Daniel Griswold</b> , High School Ministry Assistant.....	116
<b>Tom Herrmann</b> , Pastor of Ministry Support.....	119
<b>Peter Holscher</b> , Director of Café and Event Support Services.....	139
<b>Katrina Jacobson</b> , Director of Communications.....	156
<b>Elsie Kitchen</b> , LIFE Communities Coordinator.....	2222
<b>Bill Lund</b> , Pastor of MAPS (50+).....	146
<b>Steven Luxa</b> , Pastor of GracePoint Community Church.....	118
<b>Vivian Marcano</b> , Deaf Ministries.....	122
<b>Craig Moody</b> , Director of Facilities.....	173
<b>Barry O'Brien</b> , Pastor of Children's Ministries.....	138
<b>Judy Pierce</b> , Pastoral Care Coordinator.....	148
<b>Janice Pinto</b> , Director of Finance.....	162
<b>Richard Rhodes</b> , Pastor of Outreach.....	124
<b>JT Shupe</b> , Pastor of Young Adults, Singles, and Men.....	123
<b>Todd Szymczak</b> , Pastor of High School Ministries.....	126
<b>Tom Van Antwerp</b> , Pastor of Community Life.....	141
<b>Doug Whallon</b> , Pastor of Discipleship.....	151
<b>Jeanette Yep</b> , Pastor of Global and Regional Outreach.....	147

*Grace Chapel is a nondenominational church that welcomes people from all backgrounds.*



59 Worthen Road, Lexington, Massachusetts

MINISTRY OFFICES: 3 Militia Drive, Lexington, MA 02421

**Telephone** 781.862.6499**TTY** 781.674.2825**Web** [www.grace.org](http://www.grace.org)