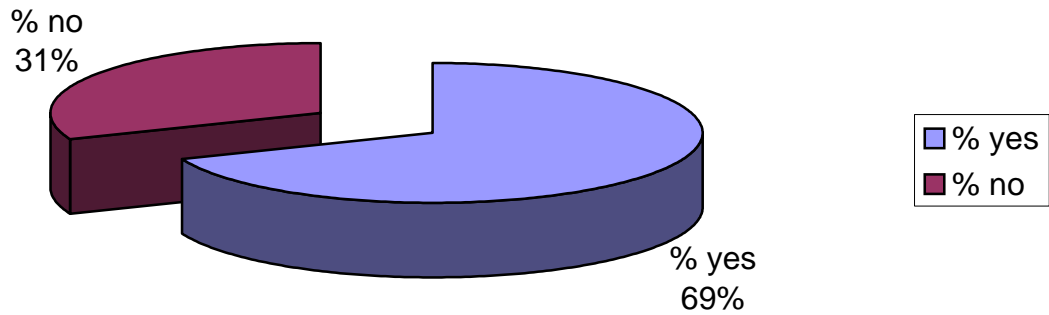
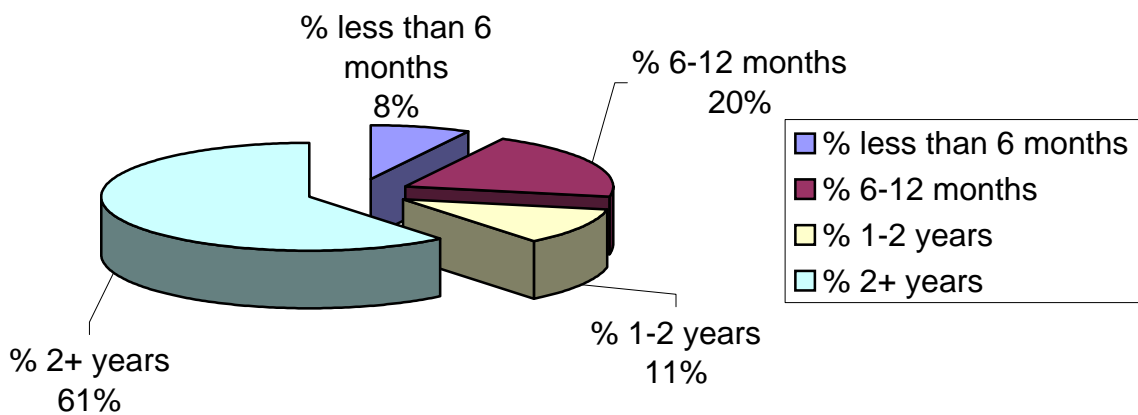


Demographics

Does the LIFE Community Meet in Your Home?



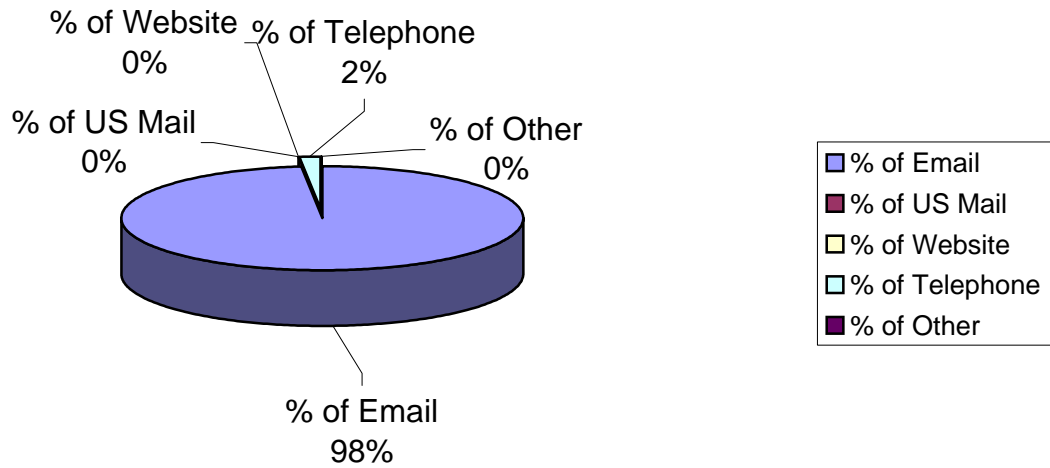
How Long Has Your LIFE Community Been Meeting?



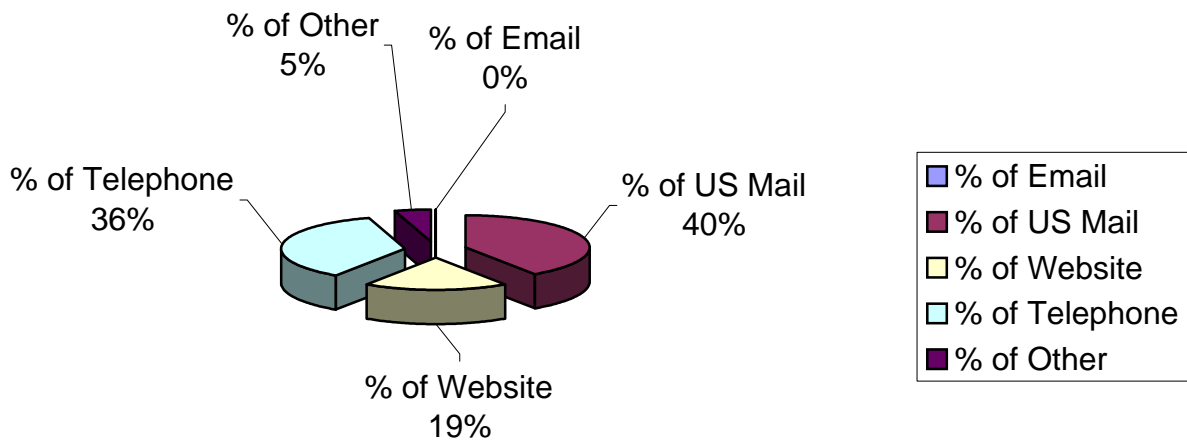
Demographics

Total Average Size of Group: 13
Average Number of Children: 1
Average Number of Adults: 12

Two Best Ways To Communicate Basic Information - Option 1



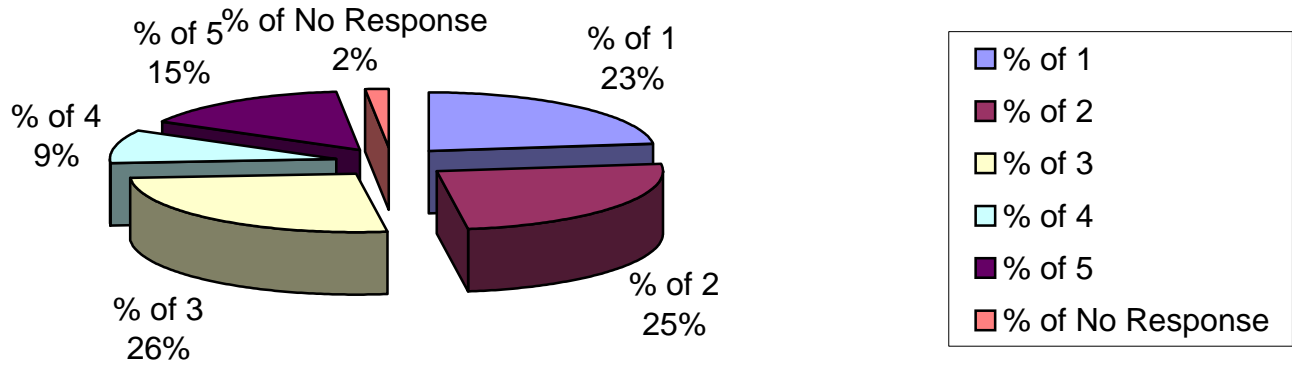
Two Best Ways To Communicate Basic Information - Option 2



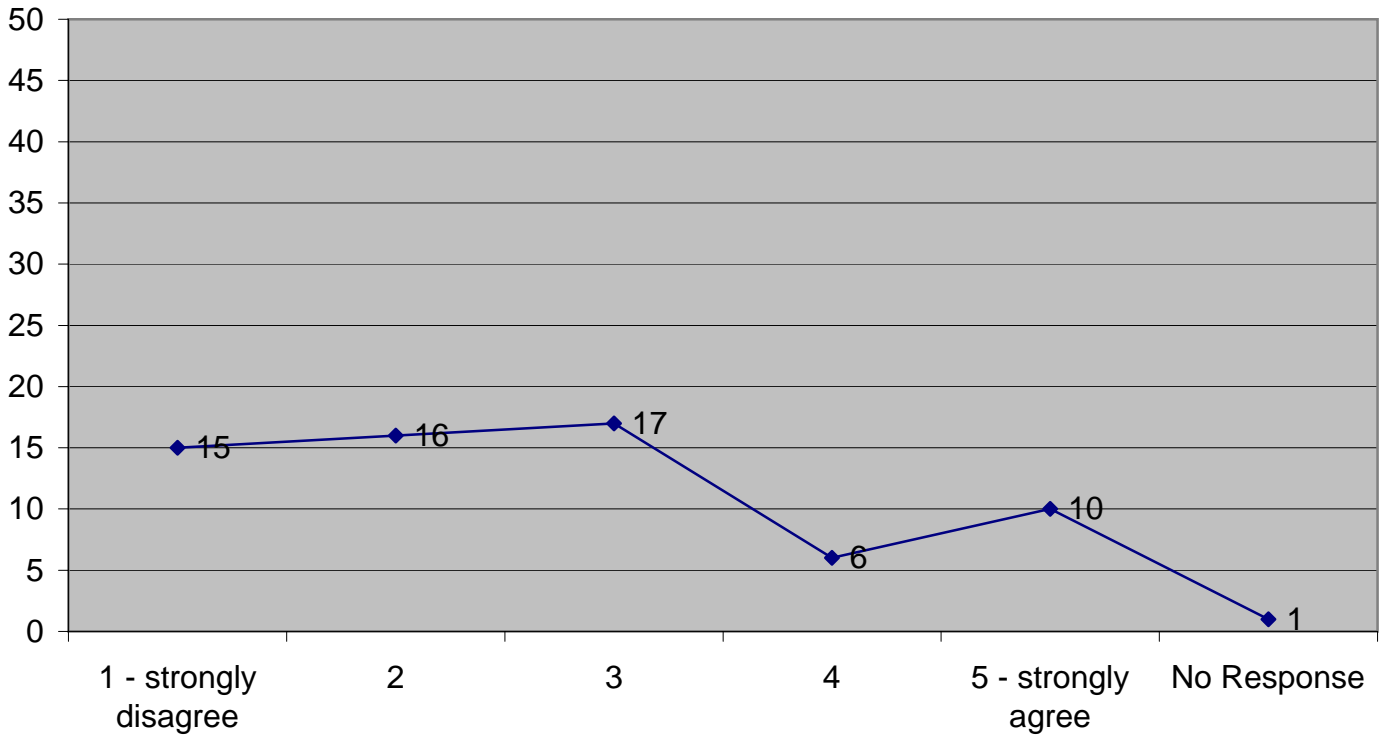
Values

Value 1

I Feel Connected With other LIFE Community Leaders?



Actual Responses



Values

Comments on Value 1

2 Only one other	3 More in face recognition - don't feel a sense of community or that I would call to encourage or ask for advice	17 Probably my fault for not participating in LC leaders meetings	20 No contact
23 May be helpful to have quarterly meetings with 5-10 LC leaders (grouped geographically?) led by a GC staff member - might provide opportunity for groups to do projects/outreach together (esp. important for this in more distant suburbs).	28 The large events and training generate a terrific sense of being part of a larger movement.	29 The large events and training generate a terrific sense of being part of a larger movement.	30 I have no idea what other groups are meeting or where. I just don't have time to connect with them and am not sure of the benefit. I do find leadership training useful when its focused on skills but I don't know id I have been leading groups for long enough that most of what is covered is redundant for me.
33 It is basically our fault that we don't rate this 4/5. We often have conflicts with the LC leader functions (on vacation, or going to a Sunday School class, for example.)	38 My wife is the true LC leader for our group and has attended some of the leadership meetings, but I personally have never connected with other leaders or their spouses	39 We are one of two Chinese LIFE Community groups. The reason we have the Chinese groups are: One, most our parents who meet with us do not speak English; Two, some of us can share our thought better (more efficiently) in Chinese during the discussion. We have felt very lucky and gracefully that grace Chapel has been very acceptant, supportive and helpful. Nevertheless, we would love to connect to otehrs beyond the Chinese. Pray for us	40 We have very few opportunities to meet other leaders. The meetings you offer at the 11:15 service basically mean we are choosing between worship or the meeting and we choose the service. (We live so far that the 8:30 service is difficult to attend.) We do our best to attend the kick-off, brunch, and end of year gatherings, which we enjoy, but cannot always attend. (4 kids keep us busy!) Suggestion: Periodic socials in varying locations around the area, rather than just at church where we can focus on leaders in smaller group environments (I don't do weel in large groups) who are geographically close to each other.
41 Have attended only 2 meetings with other leaders	42 It's hard to feel connected without weekly or bi-weekly interaction. I don't preceive it to be a problem. I feel connected with GC leaders in general, just not other LC leaders.	44 We have not been regularly attending the Sunday 11am meetings because we have commitment at Children's Sunday school ministry on Sundays at 11am	47 I feel that the connection is always available if and when we need it.

Values

48

I think we feel this way because we have not made a stronger effort in connecting with other leaders. When we have made the effort it has been encouraging.

49

We have had minimal contact with other leaders because we are so overprogrammed already. We have two small children and we can't go to leader meetings or Sunday morning training classes

50

I do feel connected to the majority of the other Fire LC leaders. I do not have much opportunity at this time to know who the other LC leaders in the church are, but that is not necessarily something I feel is needed at this time.

54

I haven't taken the time to get connected, other than the initial leadership training class and one Saturday morning leadership seminar.

55

We feel a common bond with the knowledge that other leaders are doing what we are doing, but there isn't any personal connection that we feel. This, however, is okay with us. We don't think that the church needs to do anything differently.

56

I know there have been opportunities which I have not been able to attend.

58

I know of at least one other leader and chat with them periodically as well as friends who are in other groups - but I don't formally feel connected to other leaders. I don't think that is good or bad - it's just a fact. When we do have questions or need advice - my wife and I talk and often will ask others for suggestions or prayer. So we're not lacking.

59

We are out of town much of the time, but we make our Life Community group meetings a priority

60

I don't have time to go to many of the meetings with other Life Community leaders.

62

I have not met any of the other leaders. Thus far I have not been able to make any of the leader events. We have a small child and child care is an issue.

63

This may be a function of our (Catherine and Skip) schedules and other ministries... but we don't feel a need per se to be connected with other leaders, unless there is a particular focus for Life Communities as a whole, e.g. 40 Days of Community.

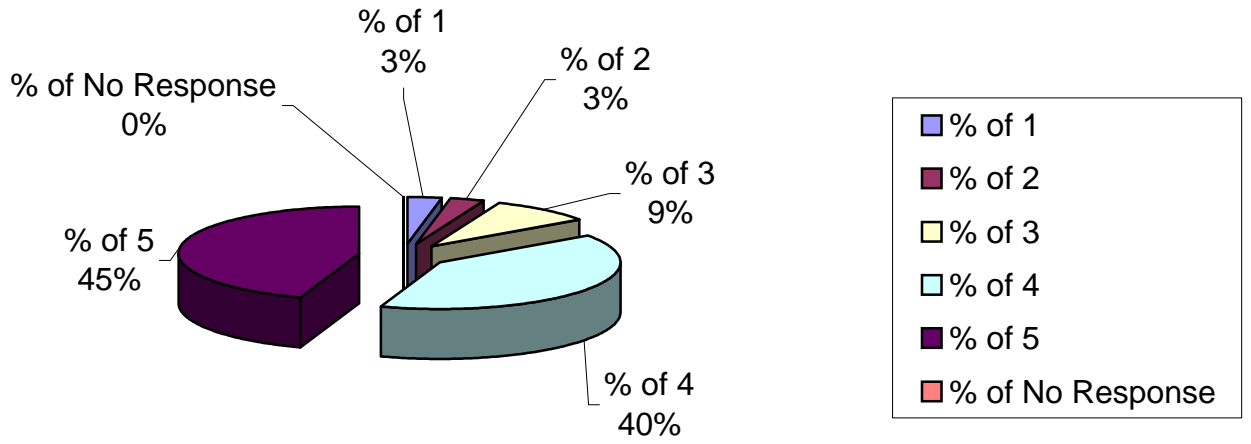
64

I have not had an opportunity to meet with the other life community leaders as a result of commitments with grandchildren.

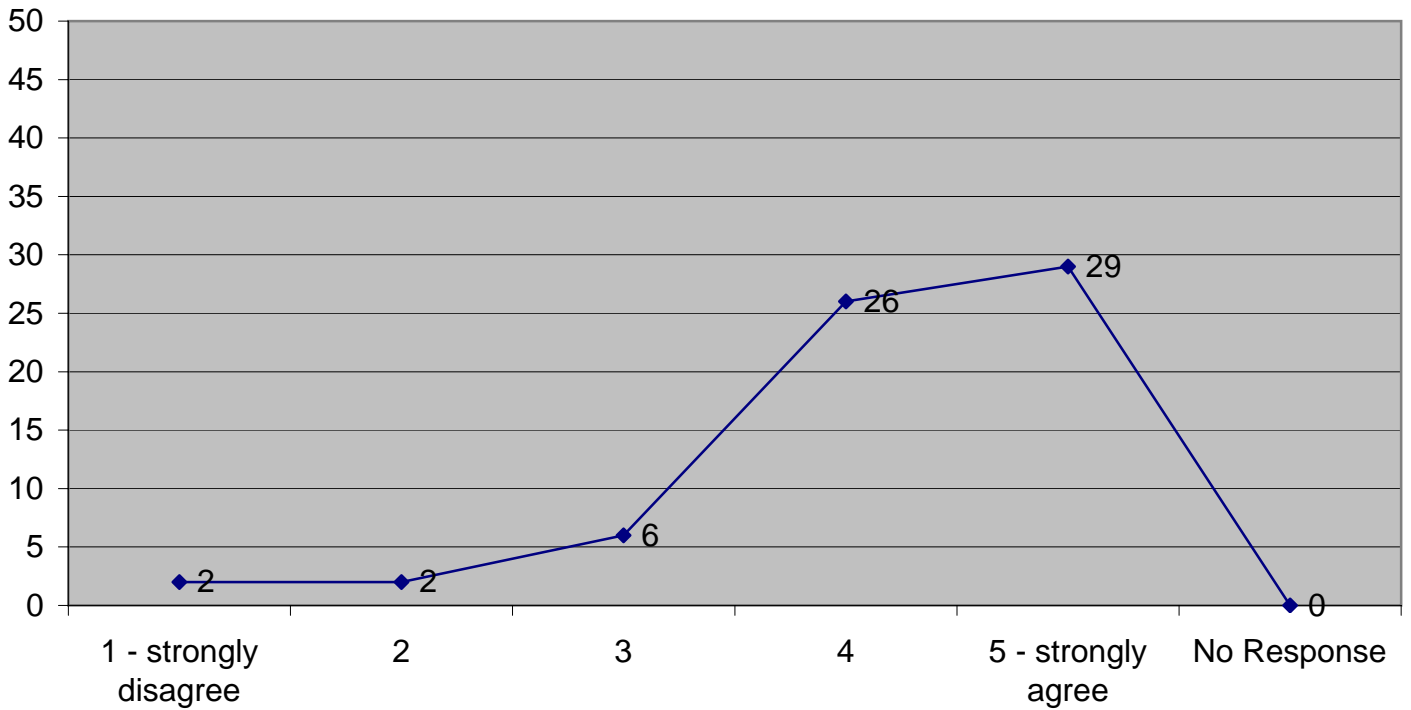
Values

Value 2

I am well informed about LIFE Community Information and relevant events.



Actual Responses



Values

Comments on Value 2

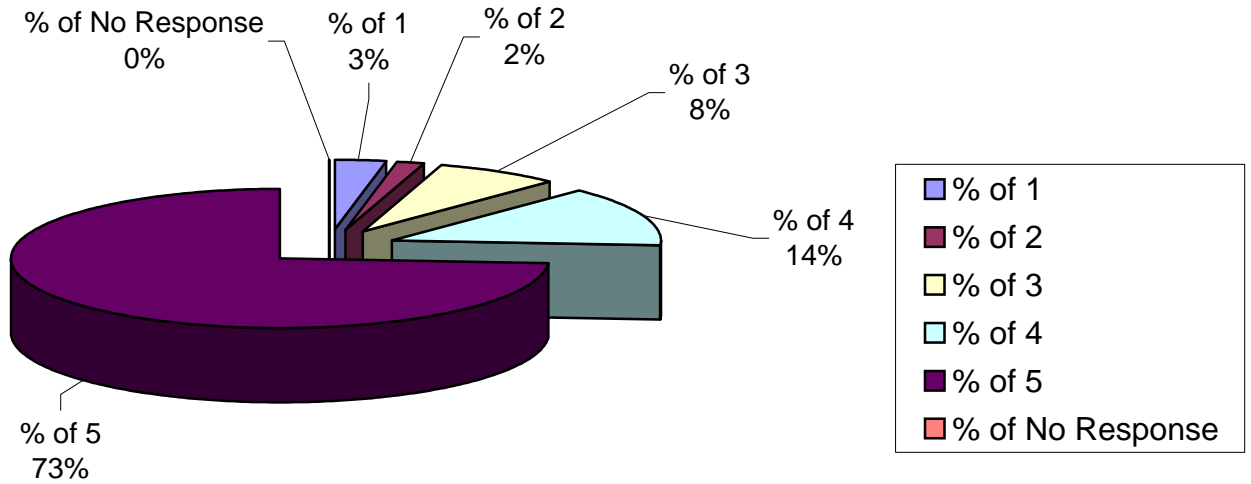
2 Email works fine	3 I think Grace should do a visibility study on our website - it is not as user-friendly as it could be - sometimes I have a hard time finding resources off Grace website.	15 Fire's program tends to overshadow general LC training. This may be ok but there is probably still room for improvement	20 Ok communication, could be better.
23 Getting an email list should solve problems.	28 I'm on the committee	29 I'm on the committee	30 The emails are the bst way to let me know what is up.
44 The email info sent by pastor Tom and/or Elsis Kitchen helps us	49 Elsie and Tom do an EXCELLENT job of communicating with us via email about training meetings, preaching schedule, etc.	58 The e-mail method works well. I read e-mail when it is sent.	59 You communicate very well through the email - thak you.
60 Good job!	64 I try to stay as current as possibole on the net, thru church, etc.		

Values

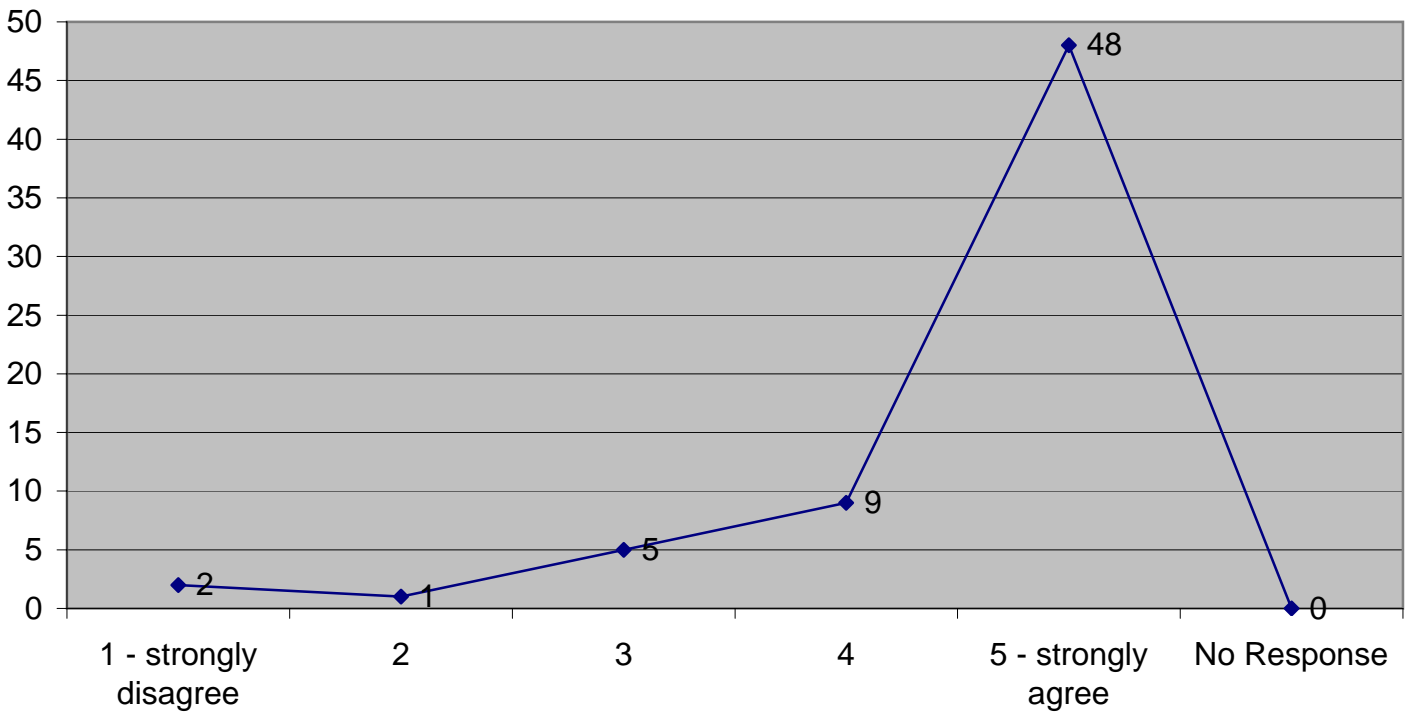
Values

Value 3

I know who to turn to when I need help.



Actual Responses



Values

Comments on Value 3

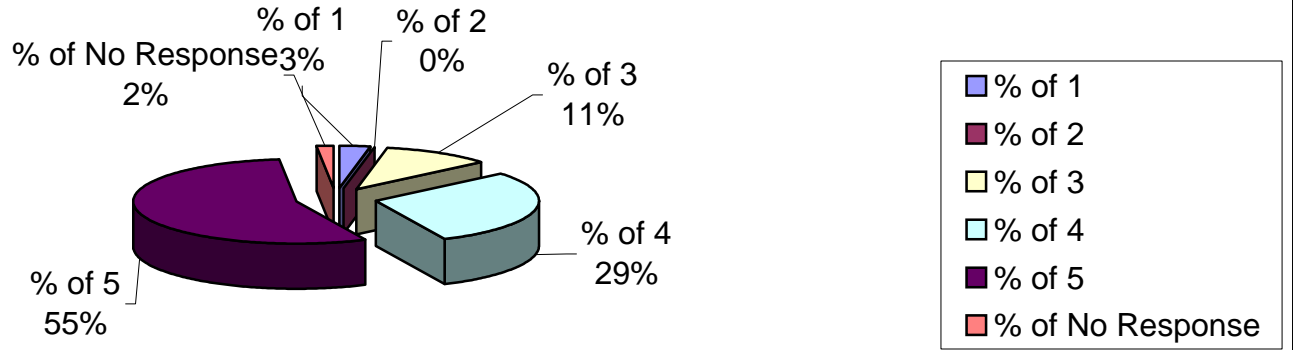
2 Who else but Tom and Elsie	3 I would go to Elsie or Tom - seems that I should be aware of a broader group.	16 I think Melanie could use some help with FIRE LIFE Communities. She oversees them and I get the feeling she is overwhelmed at times.	20 Elsie Kitchen
27 Need someone specifically assigned	28 Being friends with pastors helps a lot	29 Being friends with pastors helps a lot	44 We normally ask Elsis Kitchen for help
45 I have absolutely no qualms about asking for help and I know that Tom and Elsie are available to support me	46 I co-lead the group with Dorian Botsis so I feel pretty informed and connected	58 I turn to people who I think can help - it's not necessarily Tom or Elsie but we generally get the help we need when we need it. I've spoken with Doug as well as others members at Grace when needed.	59 We do talk with Tom and Elsie when we feel the need
60 Tom, Doug, Elsie	64 If help is needed I would turn to one of the pastors-Richard or Tom.		

Values

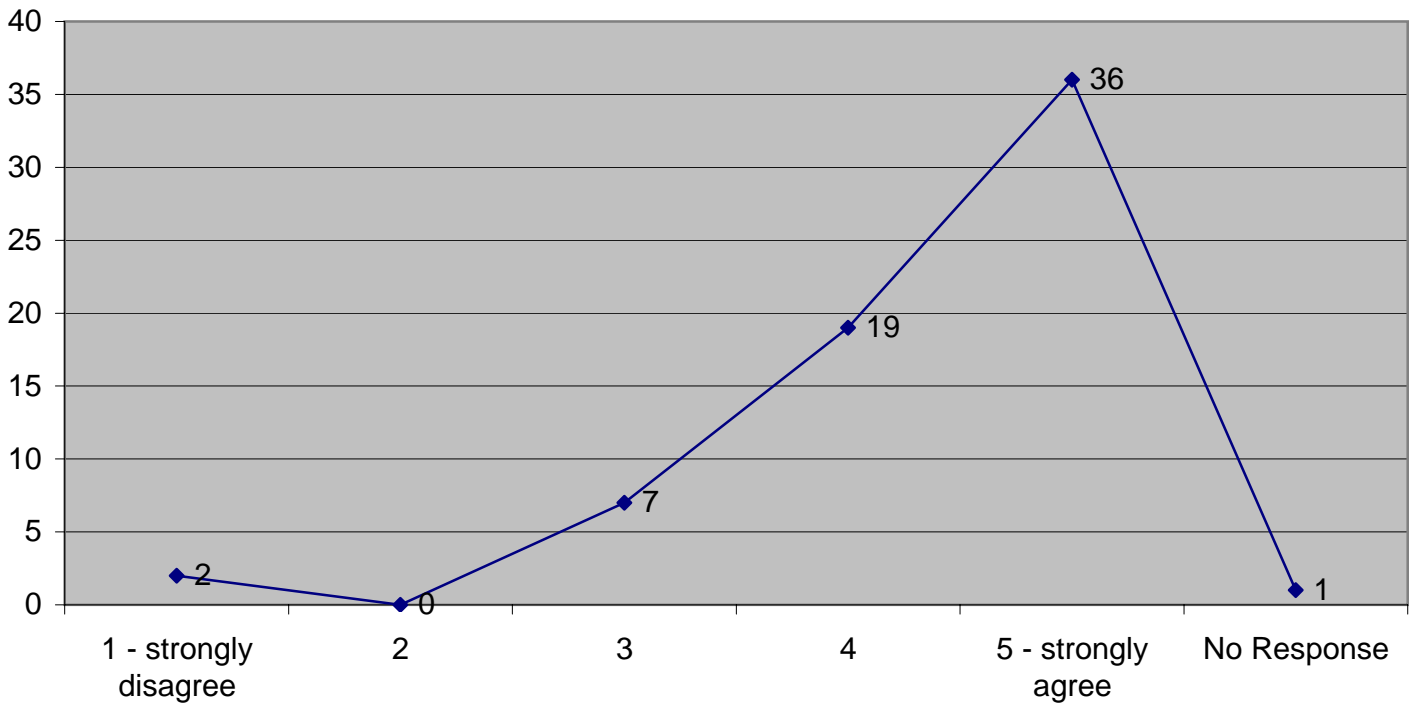
Values

Value 4

I feel well supported when I ask for help



Actual Responses



Values

Comments on Value 4

8

I haven't asked

28

Pastors, other leaders have been very helpful

29

Pastors, other leaders have been very helpful

33

Because he is so busy it sometimes takes Tom a long time to reply to emails...but we know there are others we can reach if we need help more quickly

45

The one time my co-leader and I had a sensitive situation that required us to get church leadership involved, Tom and Elsie were incredibly helpful and supportive

49

We did not receive as much support as I would have liked when I asked for help finding a babysitter for our group. We are currently without a babysitter because there are only 3 kids. They just watch a Veggie Tales video while we meet. However, we will need to get a babysitter if more kids join the group.

50

I have not yet had the need to ask for help, but if I did have the need I am sure Melanie and/or JT would definitely be supportive!

59

We do!!

62

Never really had to test this

64

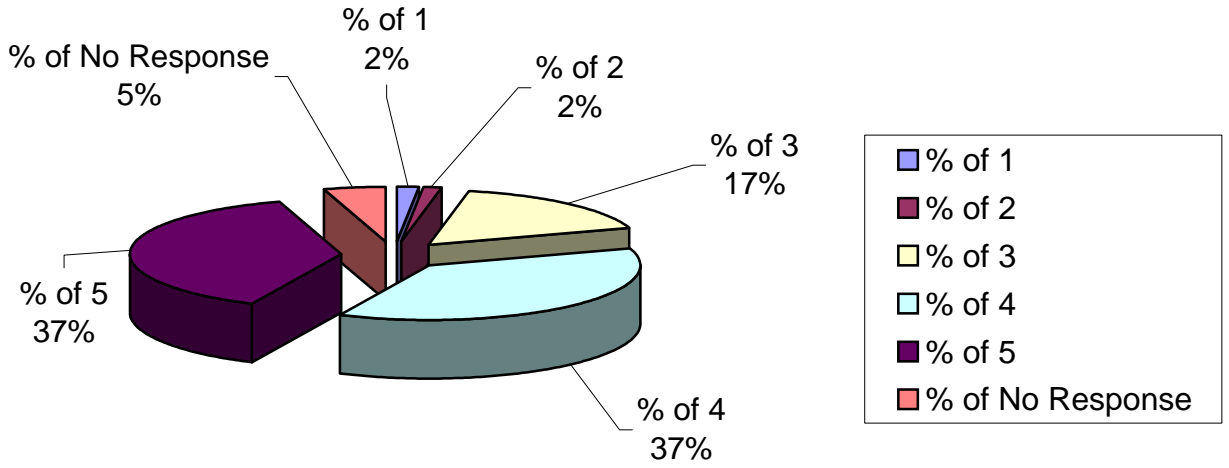
I haven't had to yet-but am sure I would be well supported.

Values

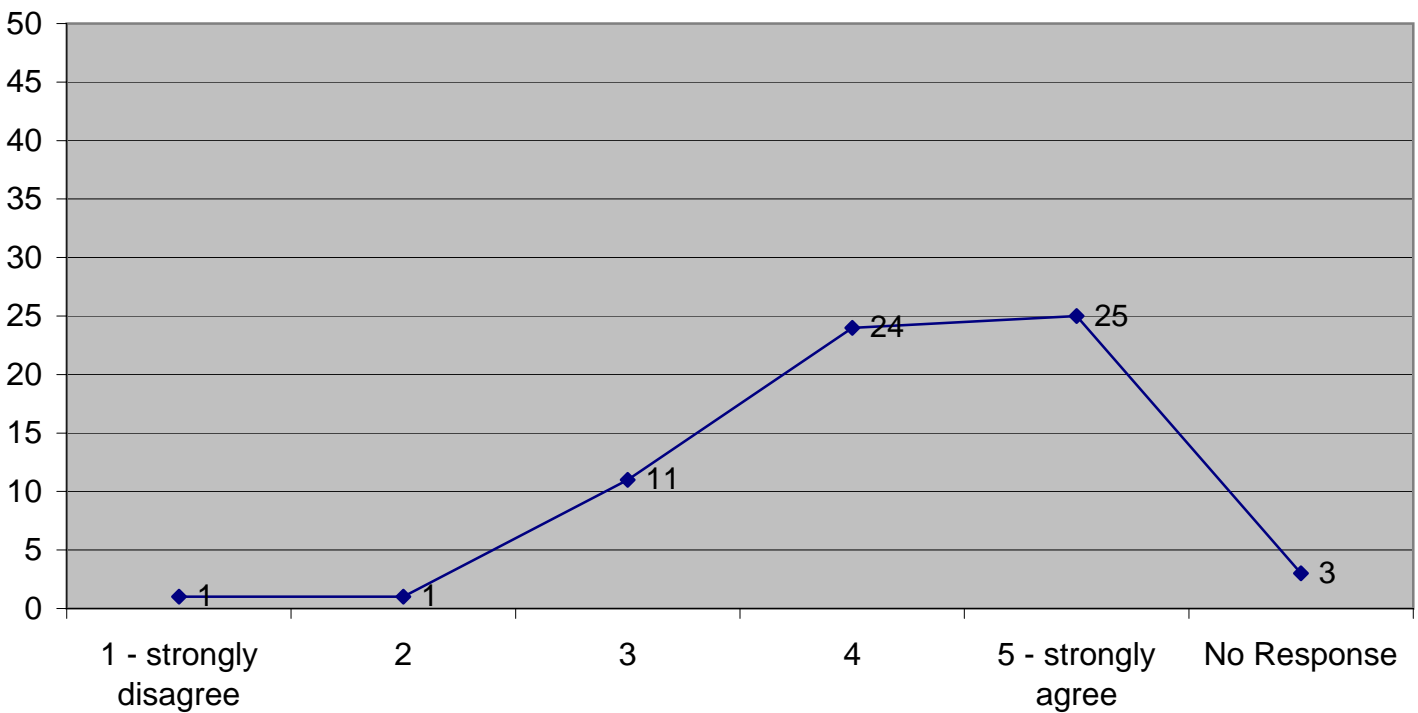
Values

Value 5

I have been equipped for success as a LIFE Community leader



Actual Responses



Values

Comments on Value 5

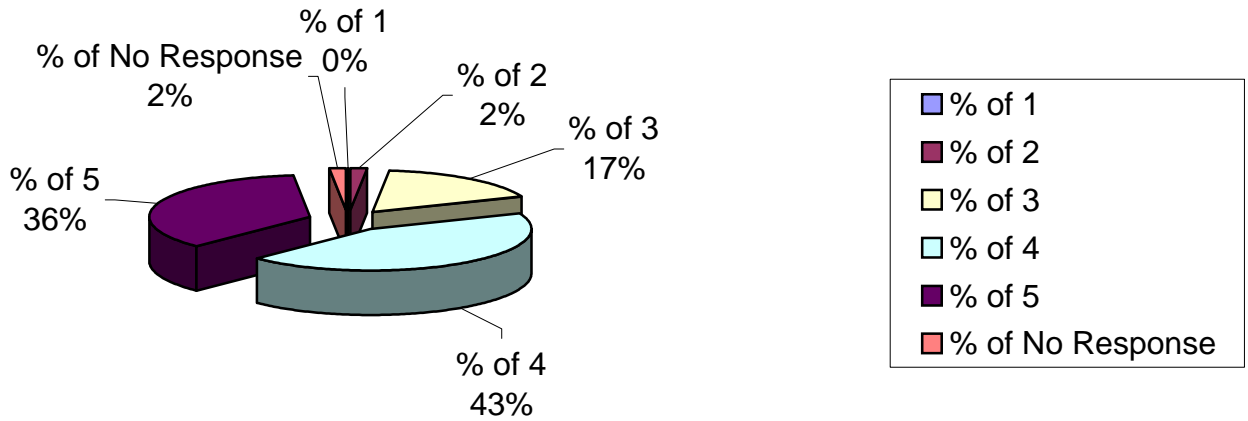
2 Through various sources	8 I have led a bible study in my home for many years - about 15 women	28 Classes, events are excellent	29 Classes, events are excellent
34 I could do a better job in some areas, but it is not because I feel that the church has not equipped me well	45 I feel like I've been equipped for success as a leader, but sometimes I wonder if there are other expectations on me as a LIFE Community leader that I don't know about. I.e. Am I doing all the things that GC expects me to be doing? I don't always know.	46 In progress...I recently finished the New Leader Training Course and currently taking the class on How to Lead a Better Bible Study. I strongly recommend that potential leaders take these classes!	47 Yes, I felt that the initial training was well thought out.
48 Because our group is so small we have not had to deal with the issues that others may or have faced. But we do look forward to it.	49 We have led many small groups in the past so I think we have the skills needed to make the group a success. We just don't always have the TIME we need to do the things to make the group more successful - i.e. call members regularly	58 Lisa and I have led studies for at least 20 yrs - so I didn't feel underequipped when we started leading a life community. But we've also appreciated and benefitted the various training sessions at Grace in the past as well.	59 We thank you for the leadership sessions we have been able to attend. Lois has led many bible studies through the years (as well as being a Mom to Mom Titus II leader. Warren has been a leader in many groups as well.
60 What do you mean by success?	64 I have led Bible Studies, enjoy teaching and interacting with others. I seek to serve my community.		

Values

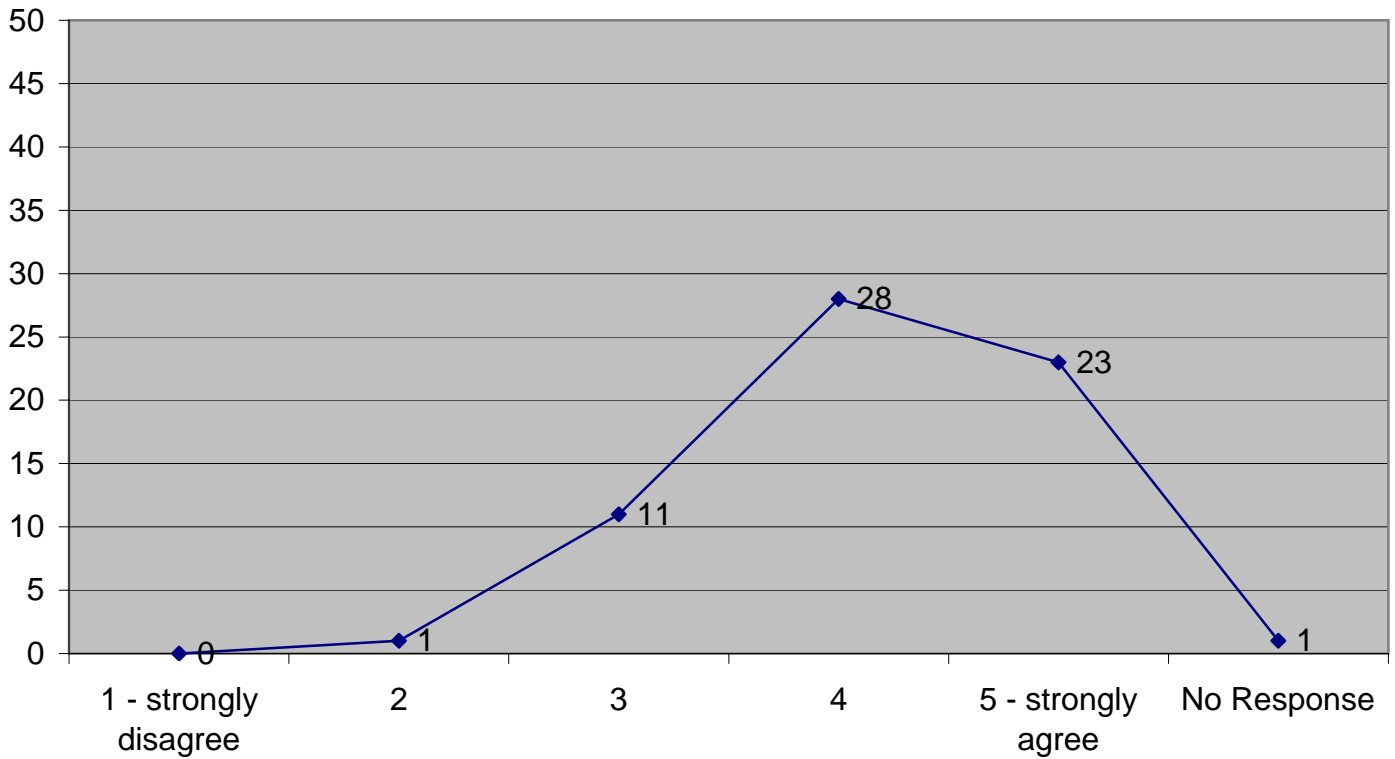
Values

Value 6a

I am personally growing in my faith by discovering deeper meaning in my study of Scripture



Actual Responses



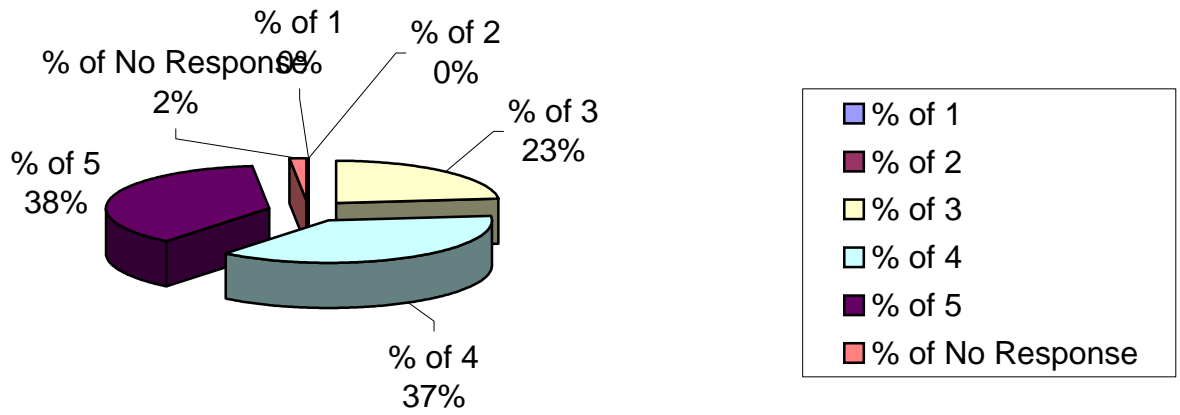
Values

Values

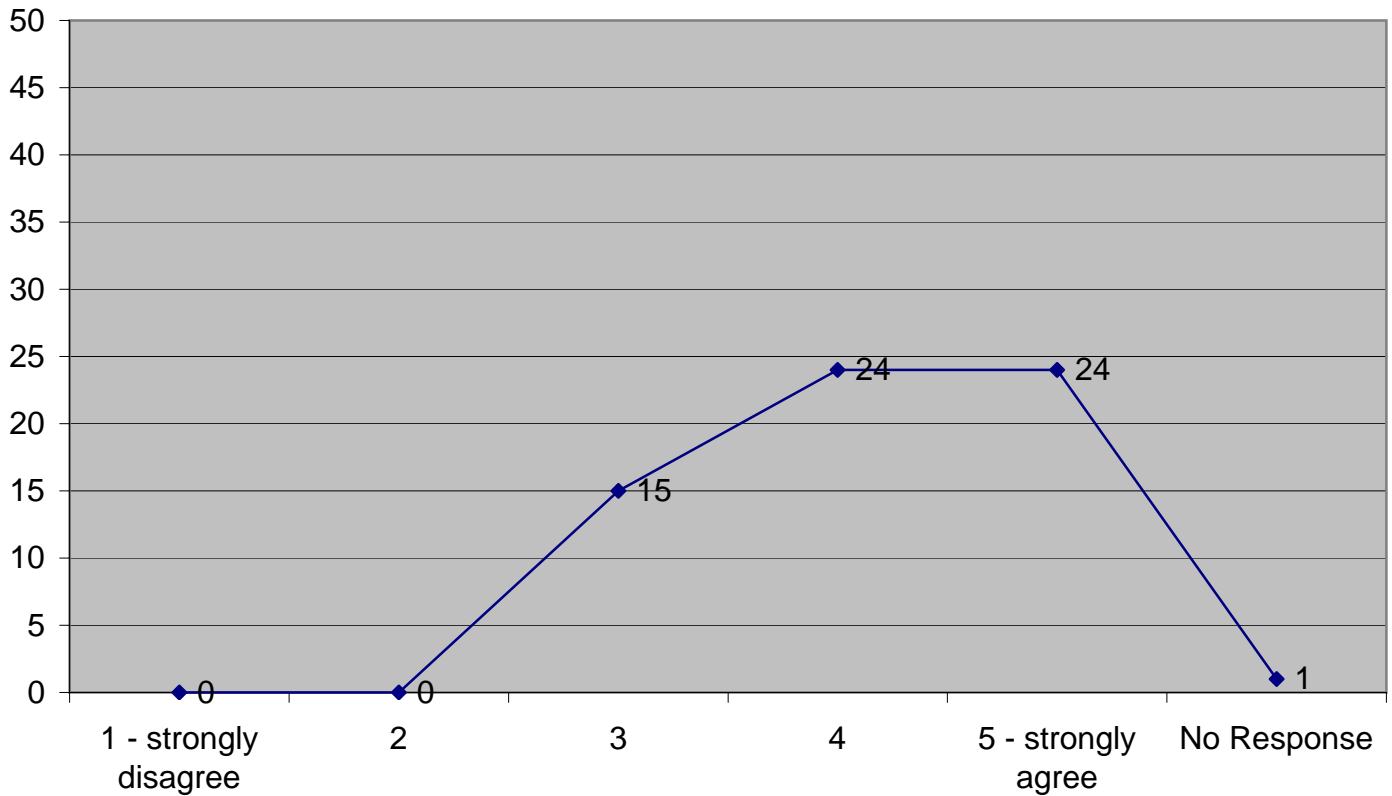
Values

Value 6b

I am personally growing in my faith by a strengthened prayer life



Actual Responses



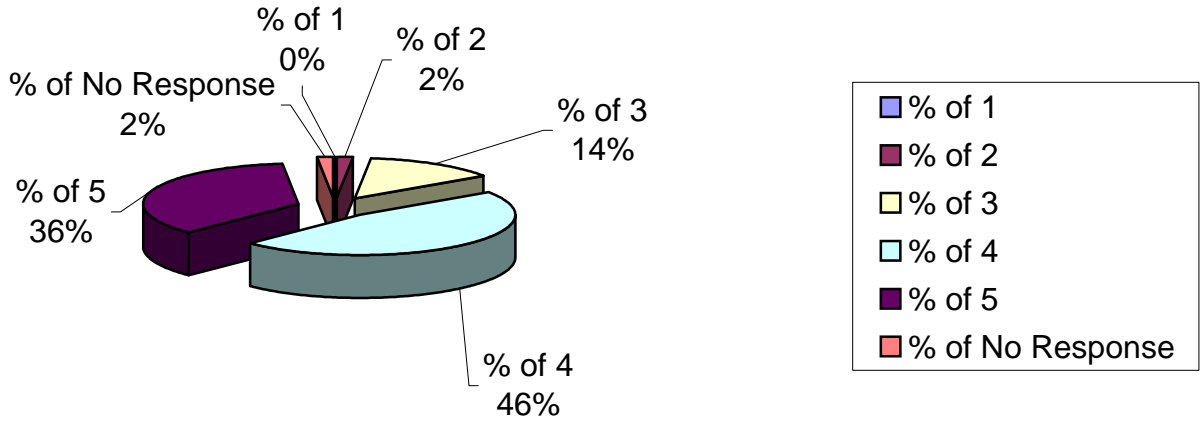
Values

Values

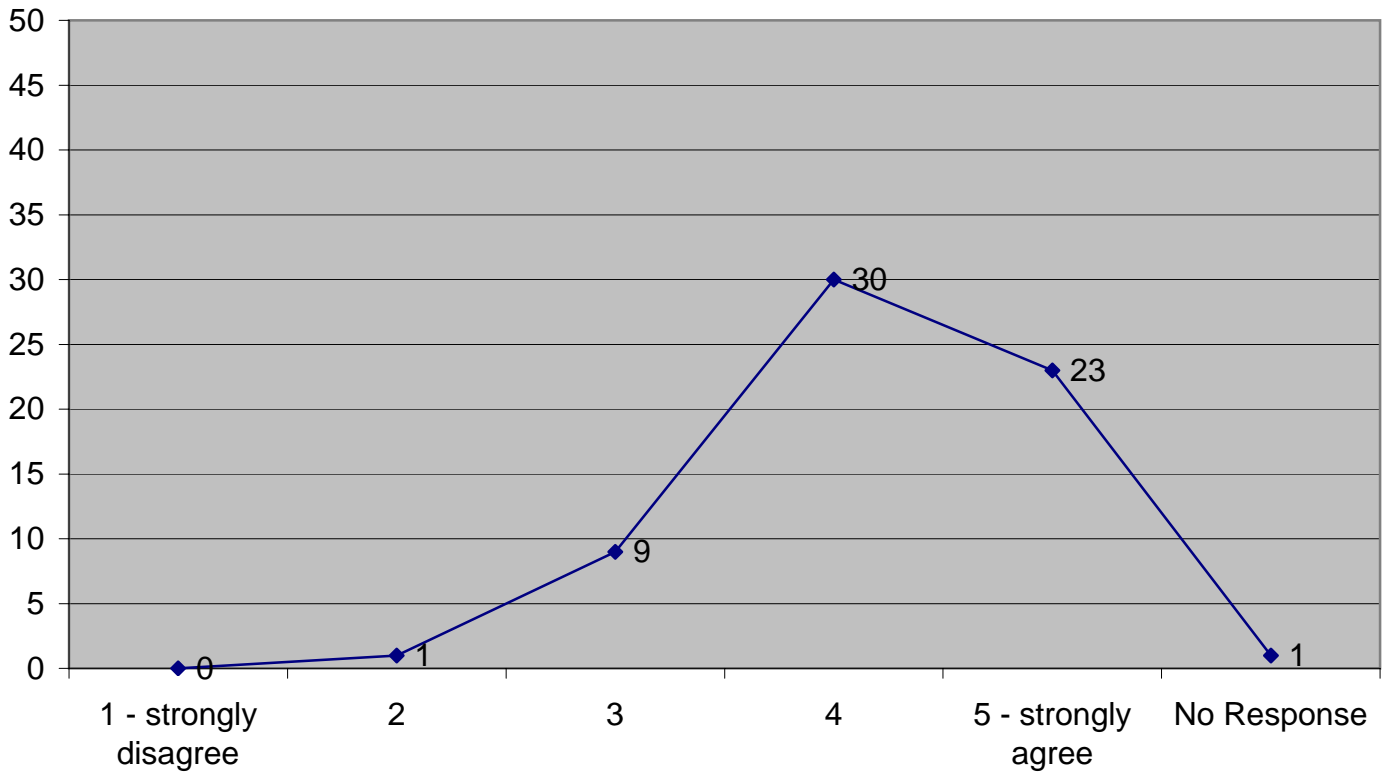
Values

Value 6c

I am personally growing in my faith by the developing of my Christian character



Actual Responses



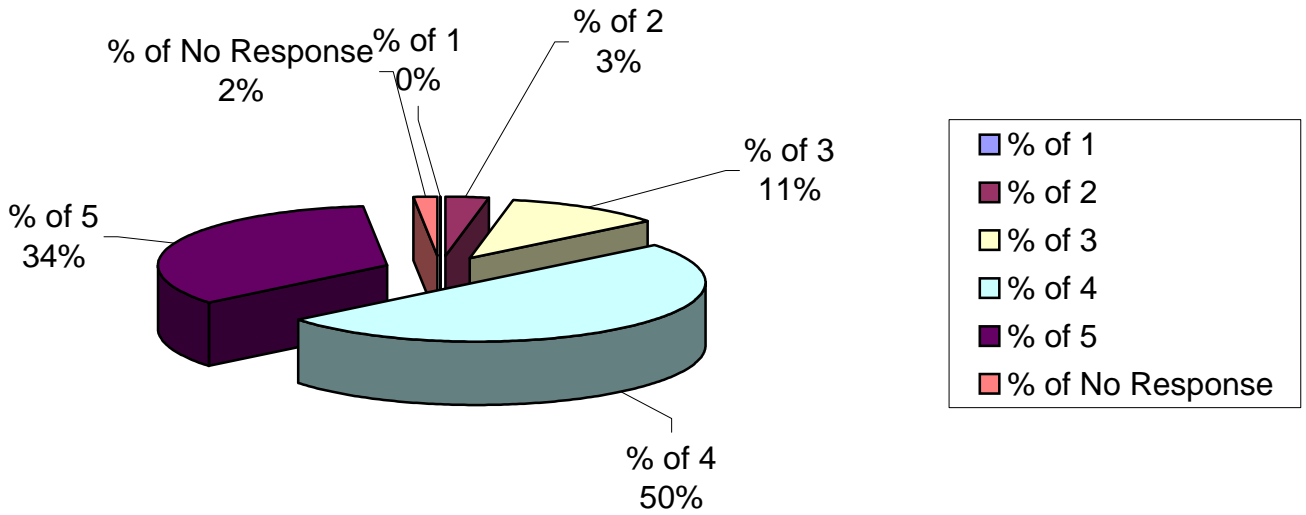
Values

Values

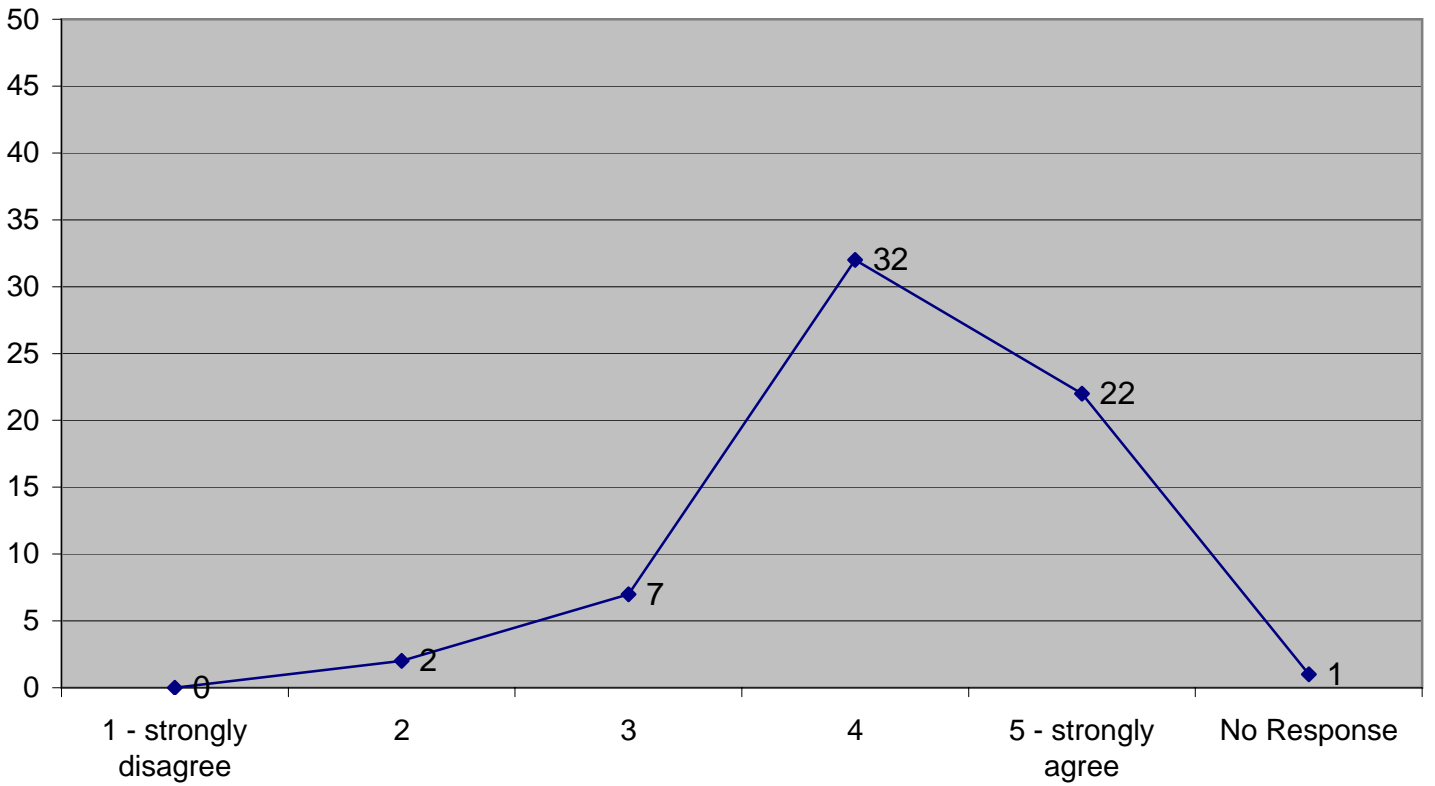
Values

Value 6d

I am personally growing in my faith by loving others more



Actual Responses



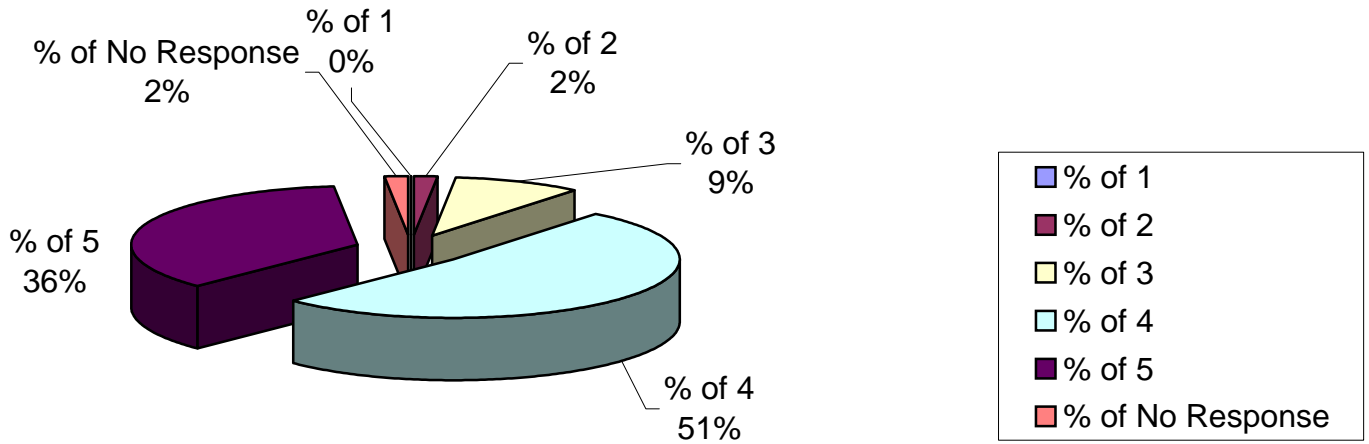
Values

Values

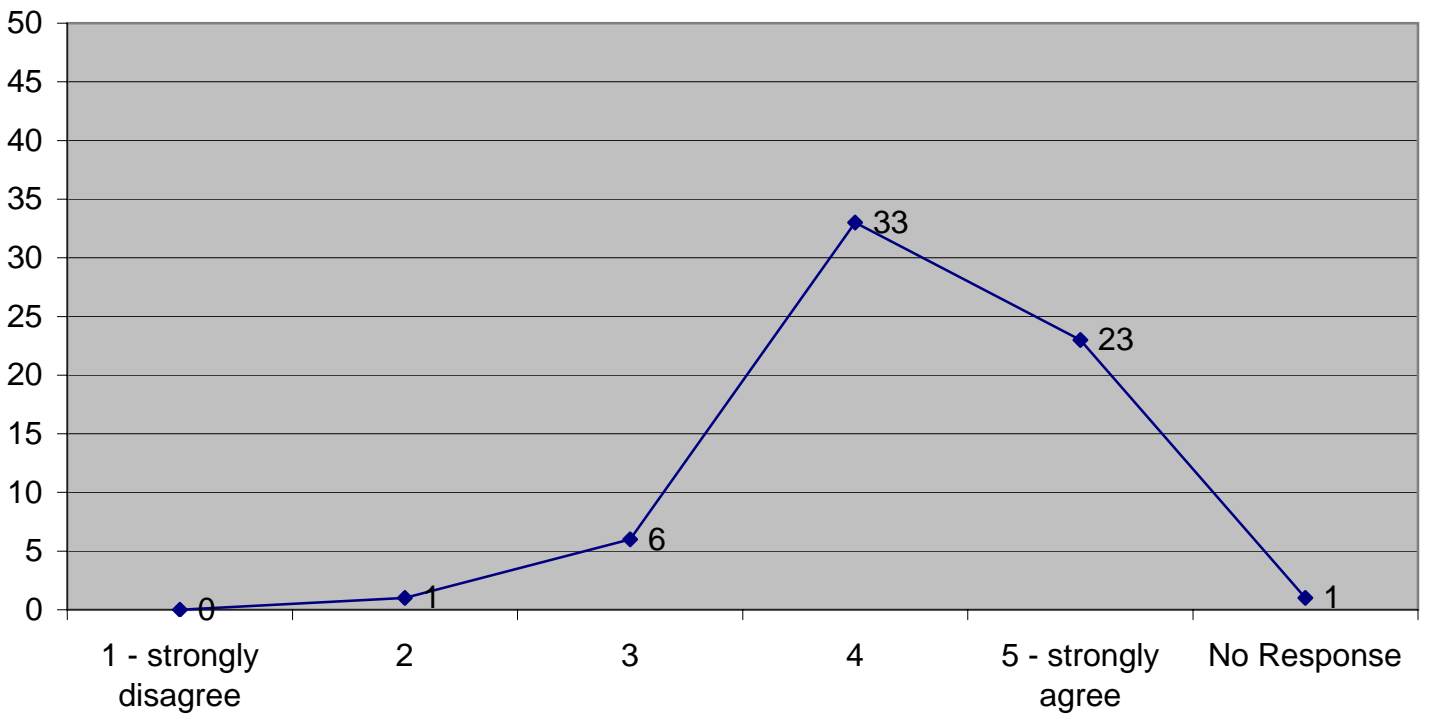
Values

Value 6e

I am personally growing in my faith by a growing awareness of the activity of God around me



Actual Responses



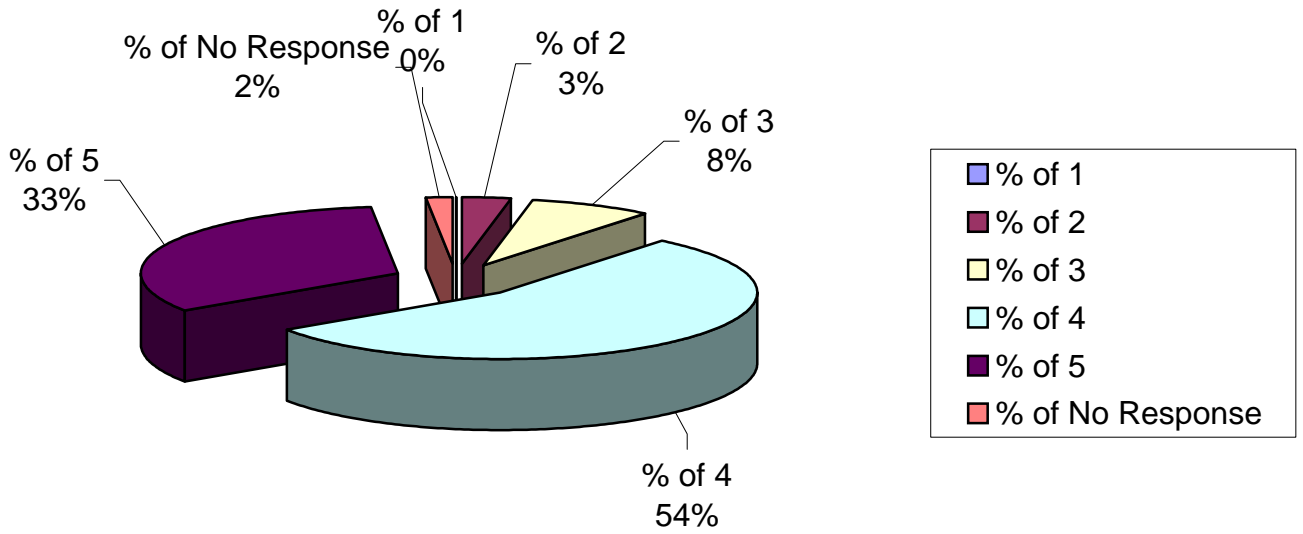
Values

Values

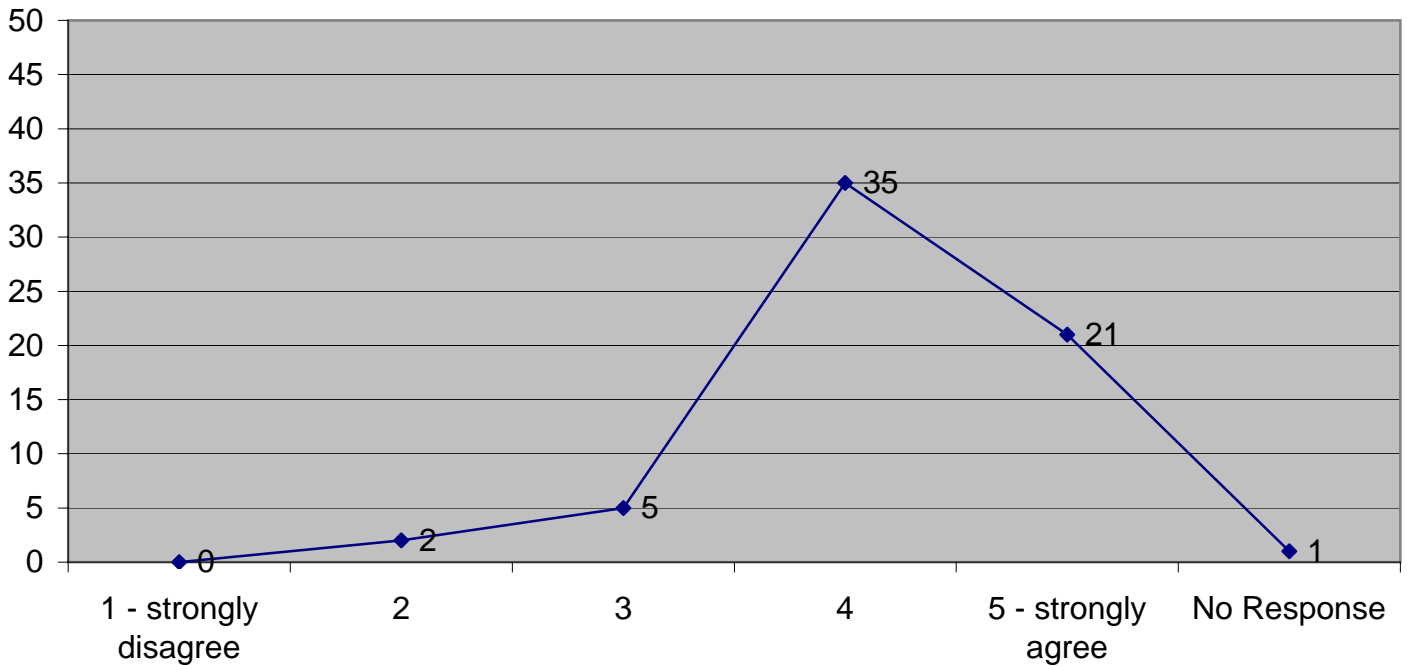
Values

Value 6f

I am personally growing in my faith by serving through my spiritual gifts



Actual Responses



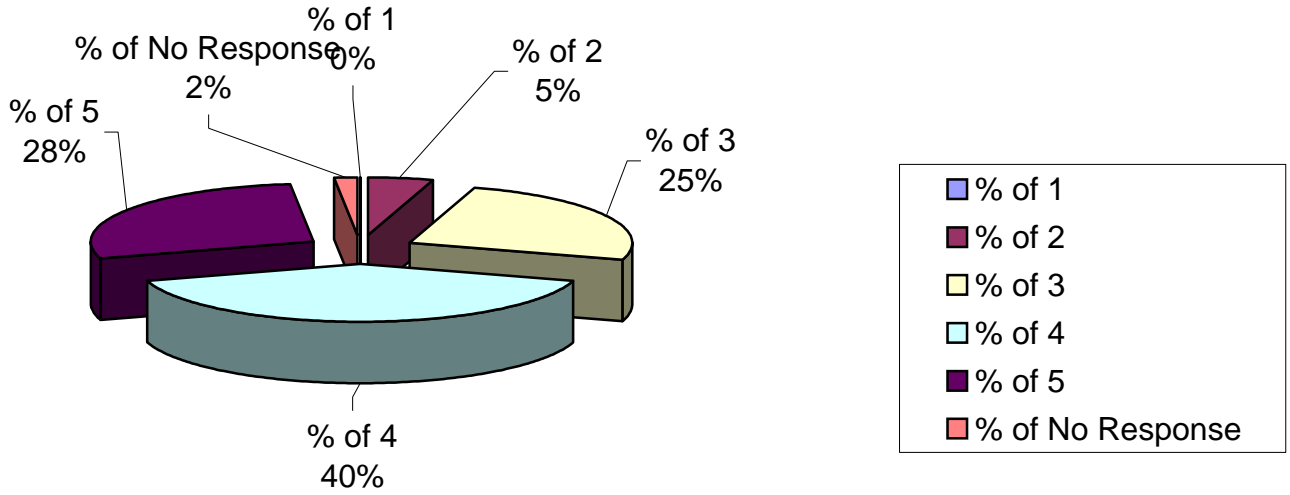
Values

Values

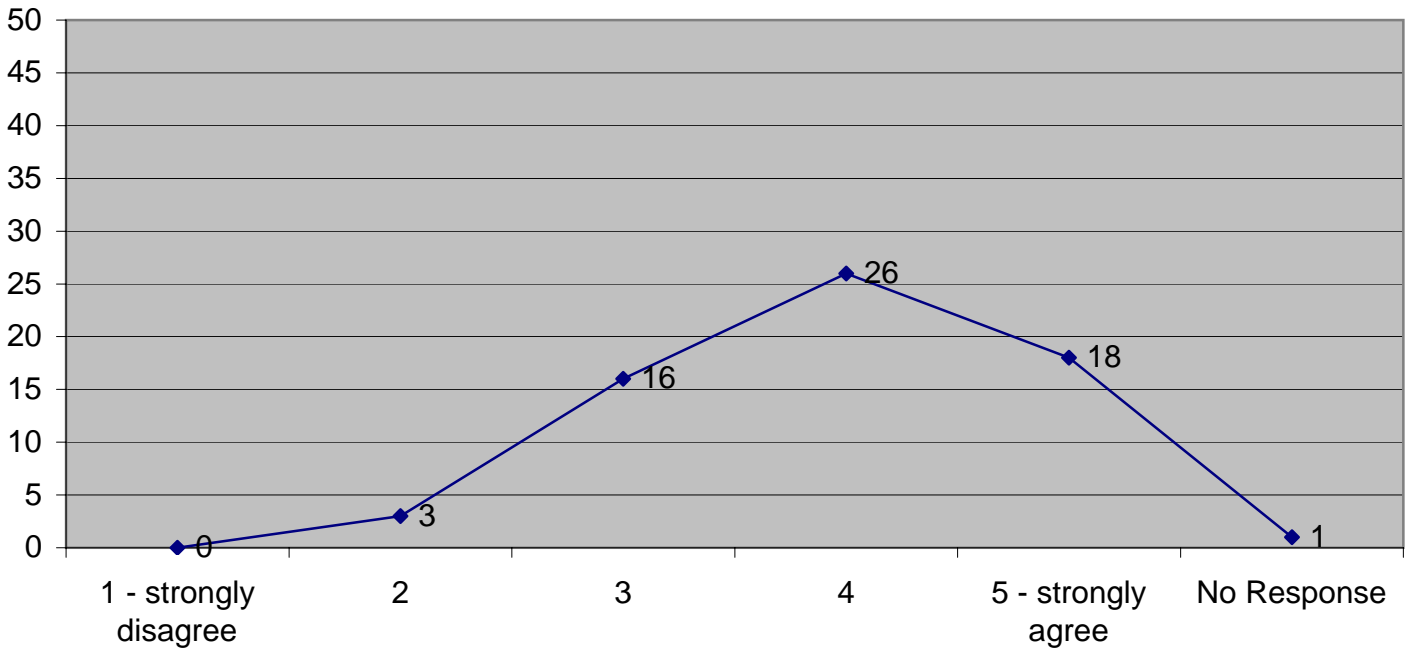
Values

Value 6g

I am personally growing in my faith by reaching out to others



Actual Responses



Values

Comments on Value 6

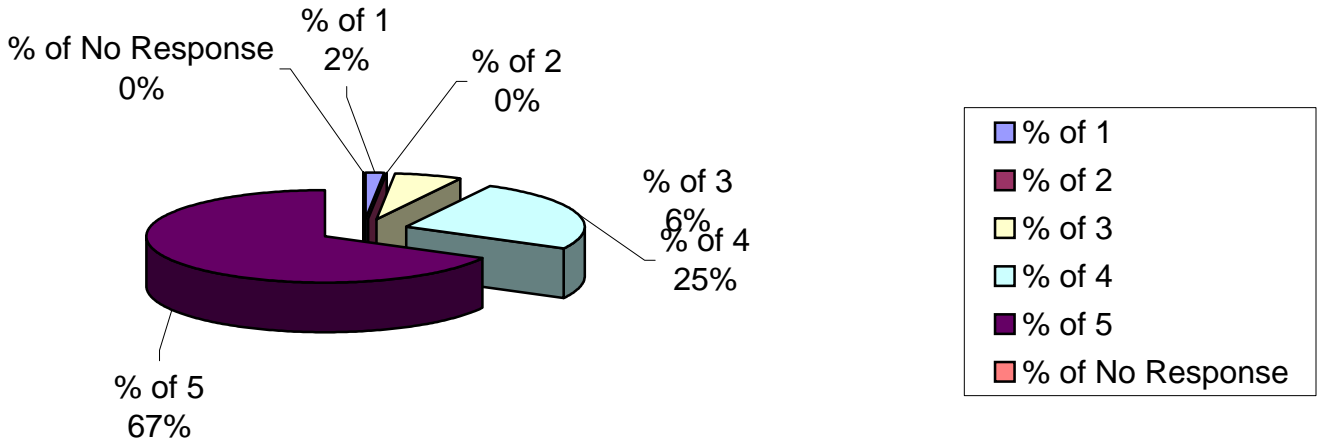
2 Always room for more but growth is happening - am open to whatever growth God sends my way	24 My prayer life could be better	28 My "horizontal" growth has greatly expanded through my LC.	29 My "horizontal" growth has greatly expanded through my LC.
30 Many of these things I do because of all my activities in my life not just because of Life Community activities.	34 I am not growing as quickly as I would like, but I am making progress	37 It has been amazing to see God's hand work in our group through each member	38 I need to the discipling of following a daily devotional that would put me on a path to read the Bible everyday
40 As is always the case, there are many ways to improve and many struggles I have, mostly finding the time to make these things (serving and studying and praying) a priority whent here are so many other important things that need to be accomplaished, such as family obligations	45 Though I am growing, I will say that my growth is hindered by my grueling list of responsibilities as a leader and host. It is exhausting - especially when combined with my many other ministry responsibilities at Grace Chapel. I am often overwhelmed by all that I do, in order to be themost effective group leader I can be.	47 Sometimes prepareing for mthe study, if I am feeling rushed, is more of an activity than a faith-building act of worship. Thankfully God seems o work through me (us) in spite of the way I sometimes get caught up in the details rather than the big picture of what god wants to do in and through our group.	48 Reaching out to others has been difficult to the business of our lives. We need to make a better effort in reaching out.
49 So much of my time is spent on leading nd administration of the group and dealing with the kids during the meeting, I don't really get a chance to grow from the experience at all. Don and I lead the group and host the group and deal with the kids during the meeting. Perhaps too much for us to manage. We should begin looking for others to lead the discussion.	52 I do not think that our group has "jelled" this year. It seems like we are going through the motions but not connecting. Thus, I am some what sad to say that my growing in the faith is happening some what apart from the LC.	58 Bible study in working. I don't pray enough. I have an accountability partner from my men's group - a great and effective thing. Recently I've begun helping Sunday am's in the Children's Ministry. I've not a frequent evangelizer but I strive to express appreciation and love for those around me.	59 We have had to trust the Lord in reaching out to those in our group who have been going through difficult trials
60 Praise God	62 This series of questions is interesting but I would think more applicable to someone with less experience in faith and ministry roles.	64 There is always room for improvement. The Life Community has taught me a lot and I am praying that God will use me for a long time to come.	

Values

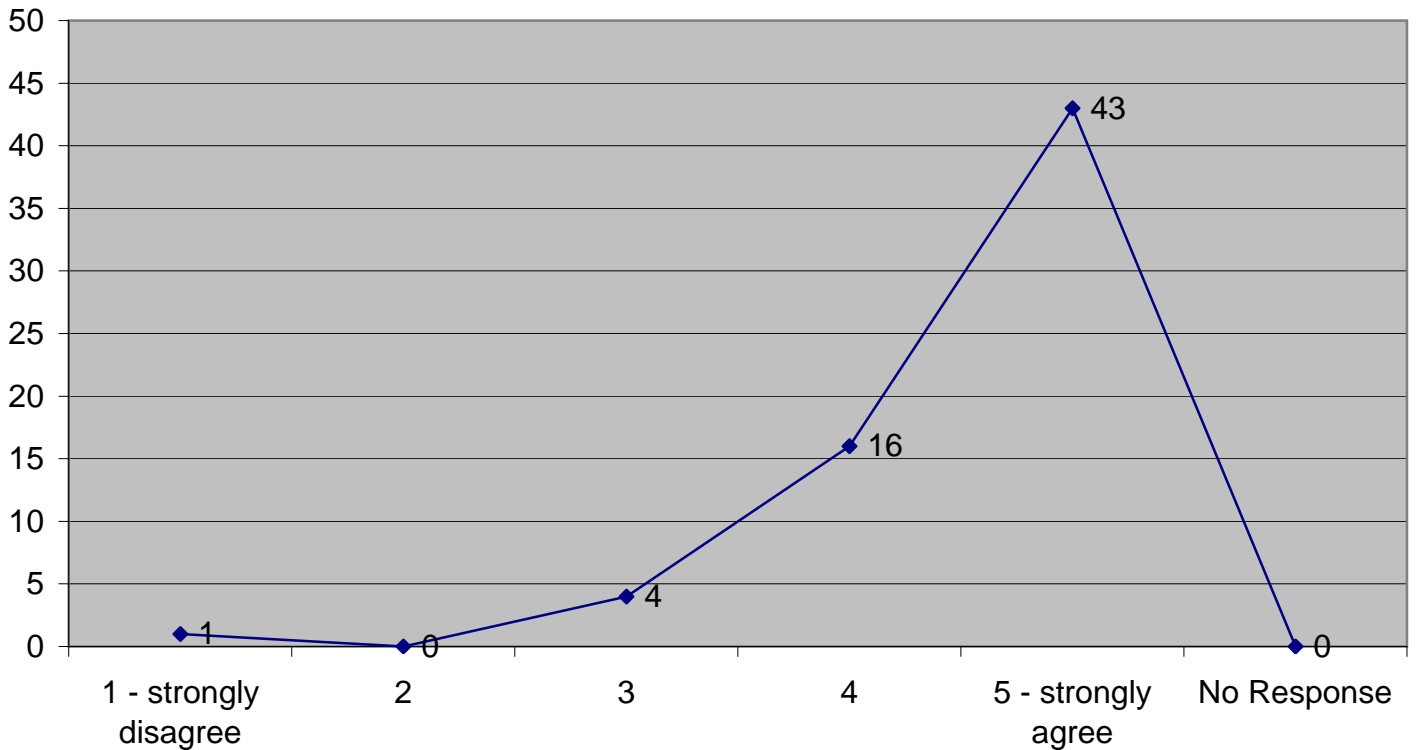
Values

Value 7a

I have a strong sense of responsibility in my role as a LIFE Community leader to God



Actual Responses



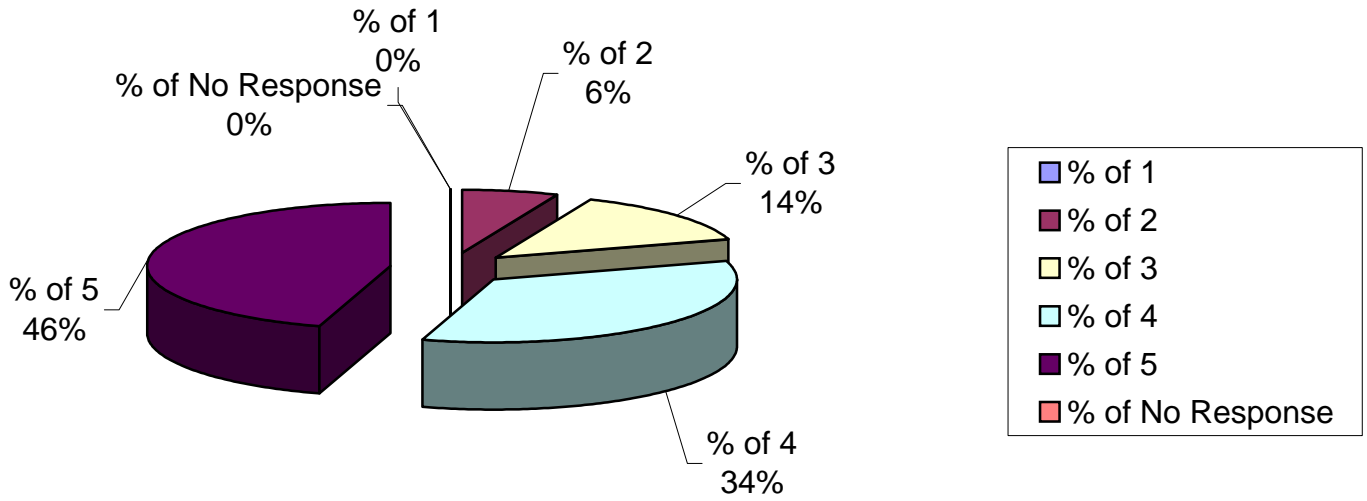
Values

Values

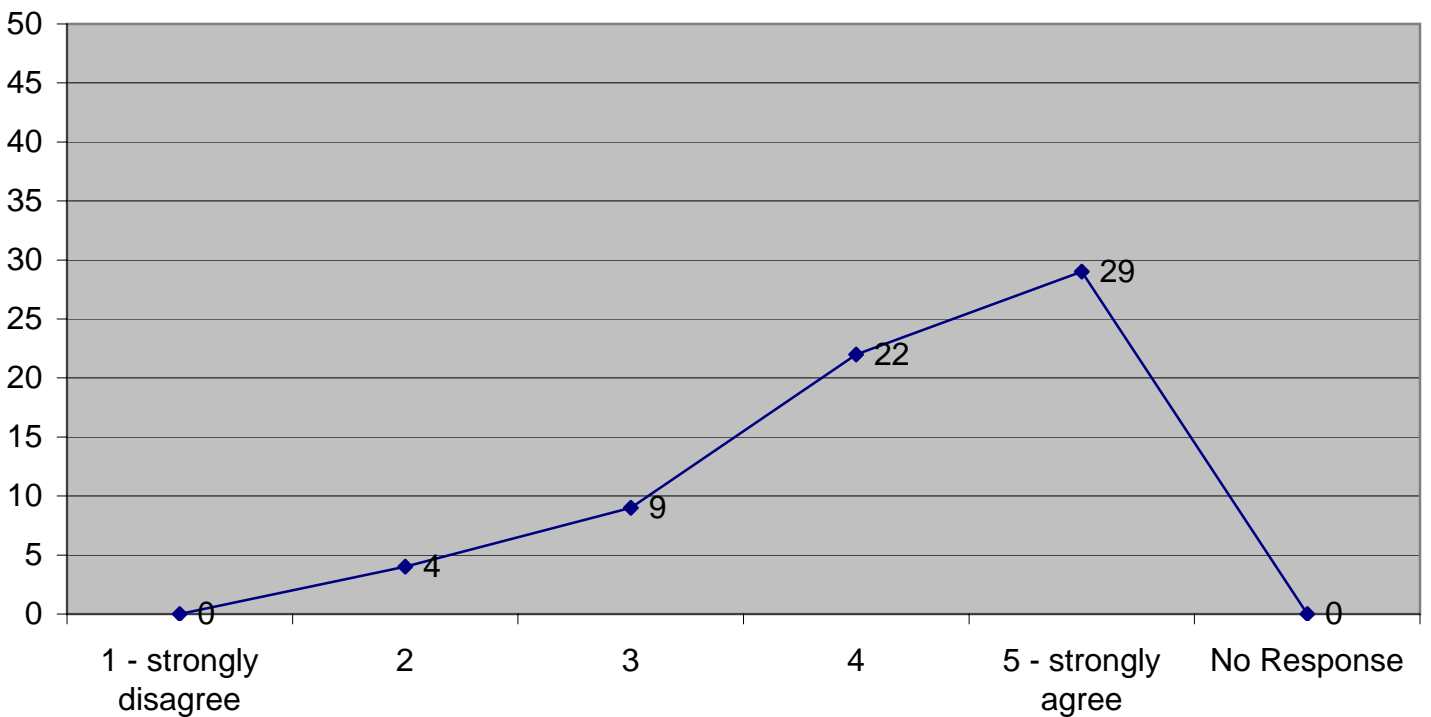
Values

Value 7b

I have a strong sense of my responsibility in my role as a LIFE Community leader to Grace Chapel



Actual Responses



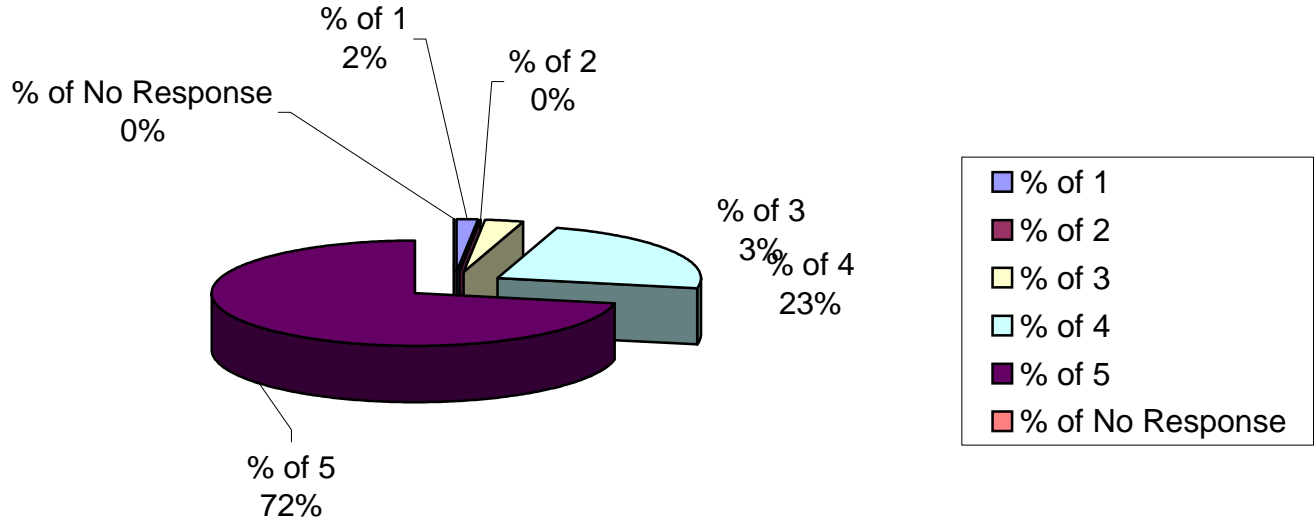
Values

Values

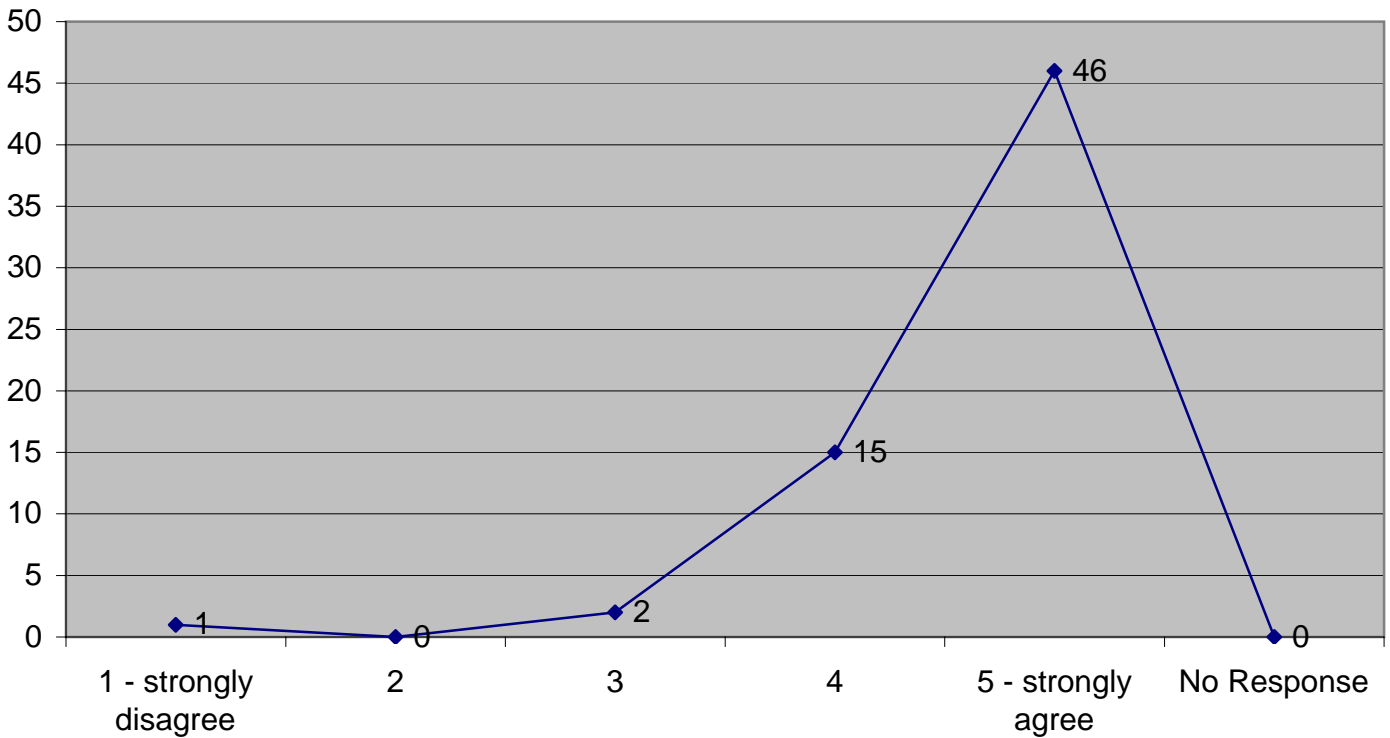
Values

Value 7c

I have a strong sense of my responsibility in my role as a LIFE Community leader to my LIFE Community group



Actual Responses



Values

Comments on Value 7

2

May it continue to grow

9

Sometimes I feel as a whole we spend more time trying to make friends with the world and indentifying their needs, to let them know if they follow Christ they can have a better life, than preaching the "gospel" which is Christ crucified for your sins - not to have a better life? Sometimes I think we develop Christ followers for what Christ can do for them rather than what he has already done through the cross. I think maybe we need to teach more of the cross and state one is in for rejecting this truth.

34

I feel that this is most critical of my different roles at the church

38

Our LC group is mmore about fellowship, and the other 3 members are more spiritually mature than I am, so I don't necessarily feel responsible as a leader to them. My LC group has helped me to grow in my faith and my closeness to God by just sharing life with others who also hold a Biblical world view

39

Our original leader and his family have left for a new town and church. I have to temporarily fill up the responsibility for the group.

45

Sometimes I wonder if I take my responsibilities TOO seriously!

47

I feel very responsible to God to do my best for Him as a Bible study leader. I also care very much about the people in our gorup and want them to grow in their faith as well. I think I am meeting my responsibilities to grace Chapel as well. If not, please advise, :)

48

The more relationships are built the more of a sense of respnsibility I feel

49

I do feel responsible, which is why I feel so guilty that I am too busy to give the job the attention it deserves

52

I am wondering if our group needs a different dose of leadership. We have led this group for 2.5 years and my expectations related to the group connecting etc. have fallen short. It maybe that all the families in the group have young kids (most under 5) that cannot extend themselves beyond the LC meeting time. Whatever the reason maybe, I think that this group has had a hard time connecting.

55

We put a three on the Grace Chapel responsibility question mostly because we're not actually sure what you mean. We obviously are representing Grace as a church when we lead as members of Grace. But are you asking if we have some sort of direct responsibility in terms of doing everything you suggest? If that is the case, then we don't feel a responsibility to always follow the preaching in our study or to always have the group meet on the days you suggest and etc....

56

I think I began leading without any desire to increase my responsibilities! God had different plans and has made it clear to me through others, where I need to step up. Its been an amazing experience!

Values

58

I certainly feel a responsibility to Grace - but I don't feel compelled to walk in lock step with the Life Community program. For example - this fall our group chose to study John instead of follow the REACH series. It seemed like the right thing to do at the time - the Lord many in our group really only came to faith in the last 1-2 yrs - and deep time directly in scripture and working through what it means to believe is really valuable at this time for our group.

59

We feel a strong sense of responsibility in our roles as leaders in preparing the lessons, leading the sessions, praying for and caring about those in our group (and those they care about)...wanting to see those in our group grow in

- the Lord

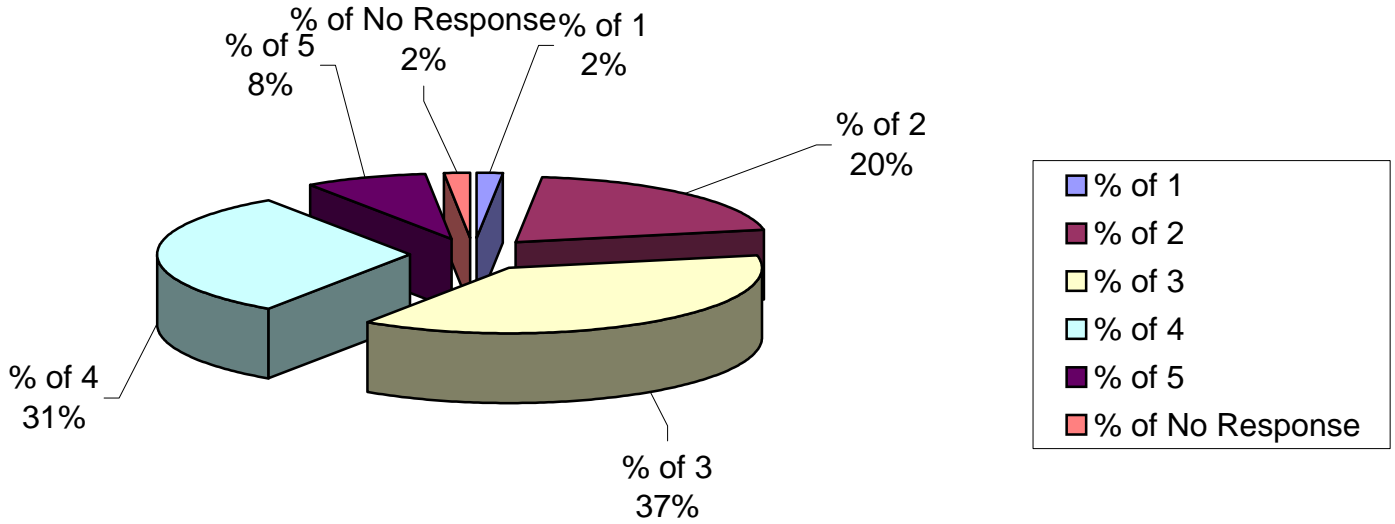
64

My commitment to Grace is very strong but I haven't made the time to make it a priority because I teach one hour and take care of two grandkids, attend worship service and it is nigh impossible to add another meeting at church.

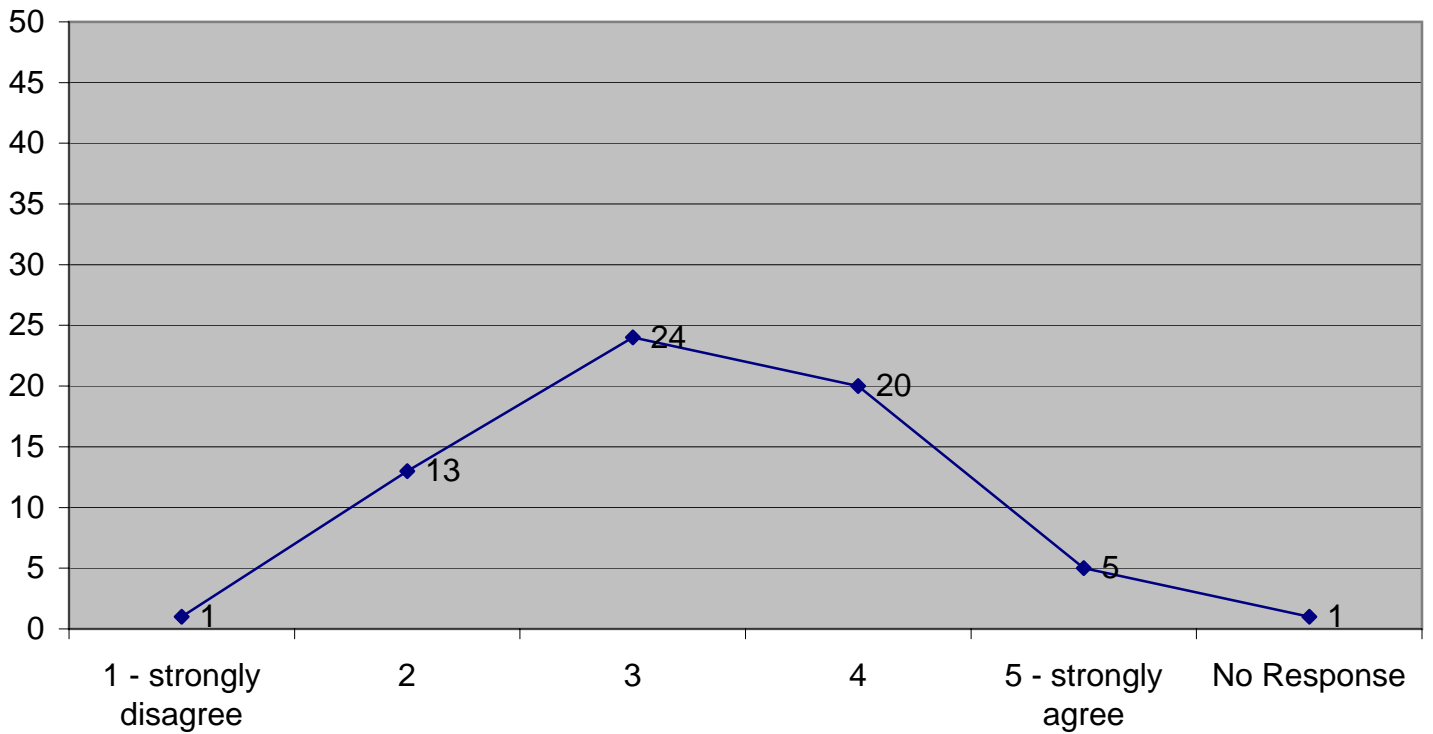
Values

Value 8a

I am helping people in my group by identifying their gifts



Actual Responses



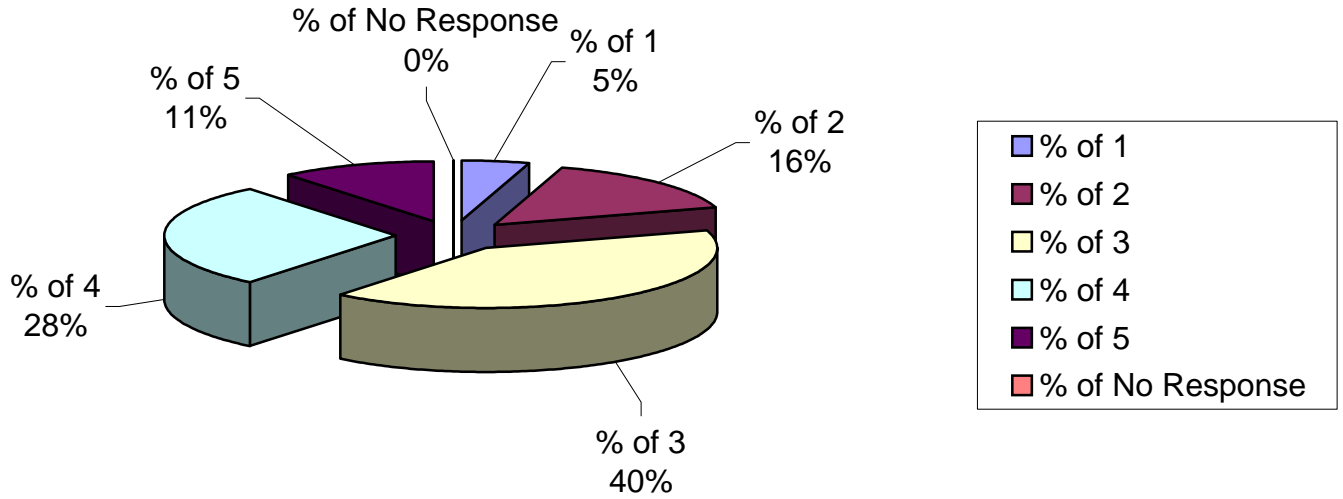
Values

Values

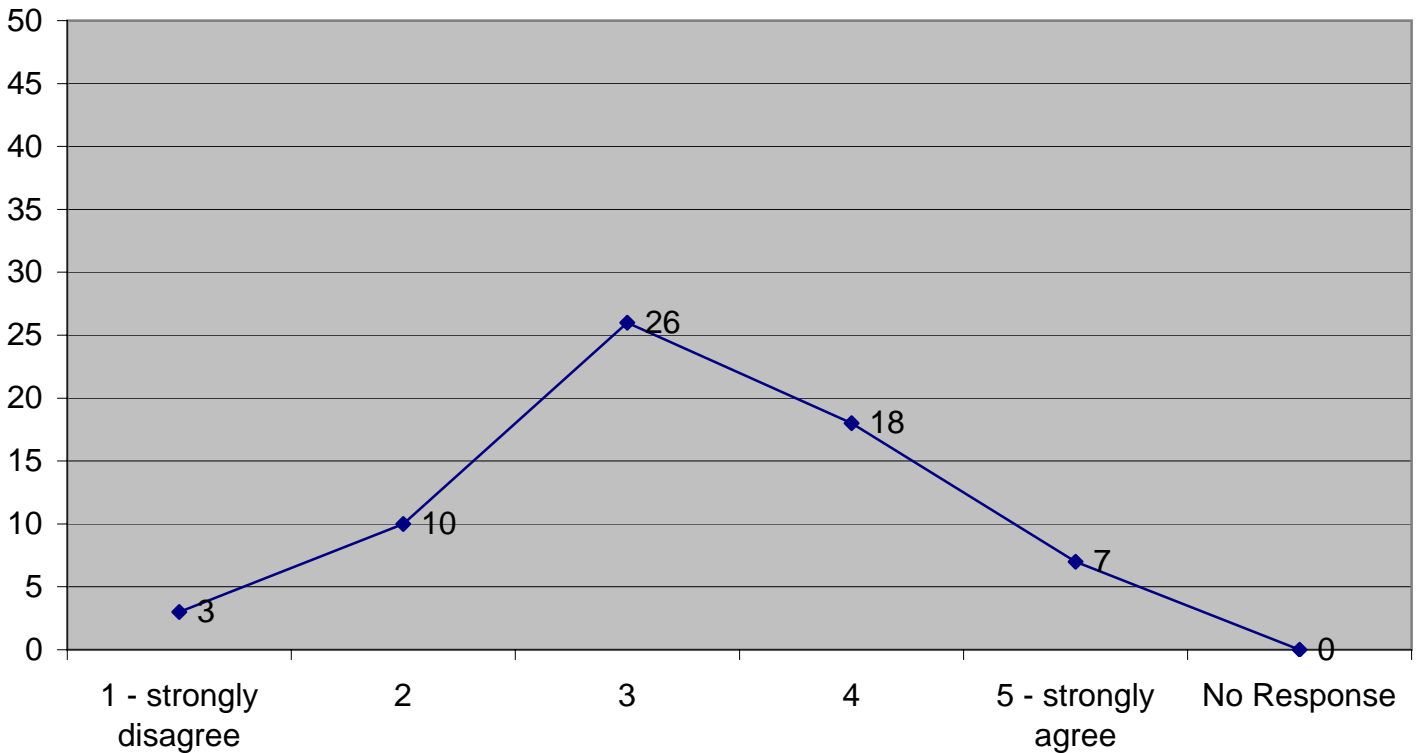
Values

Value 8b

I am helping people in my group by discovering potential leaders



Actual Responses



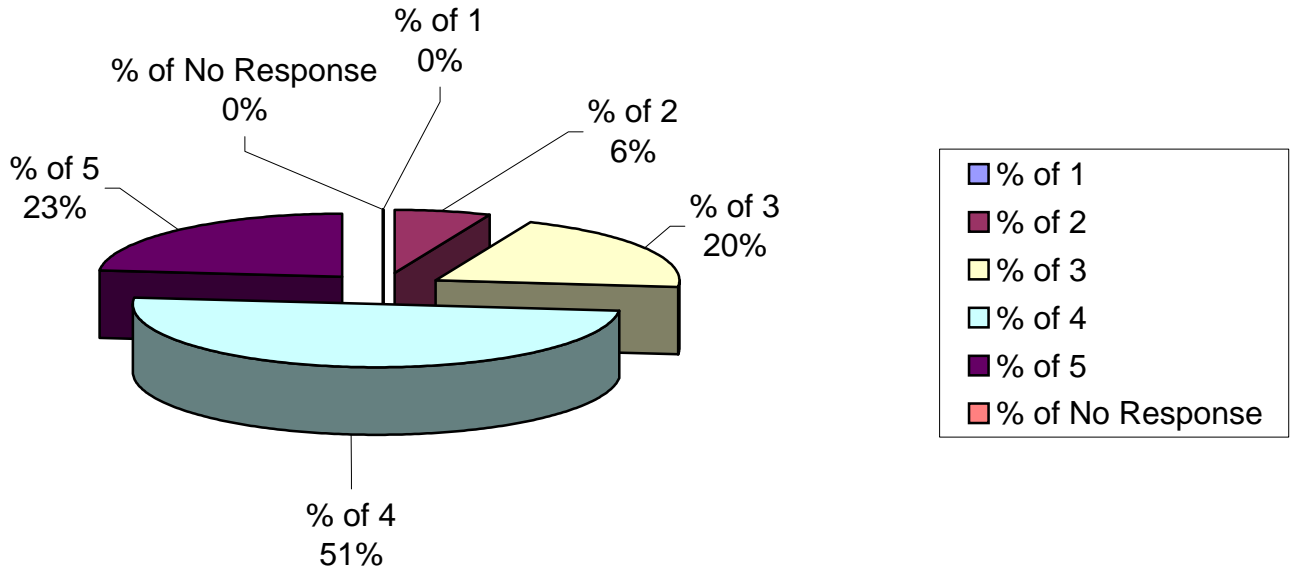
Values

Values

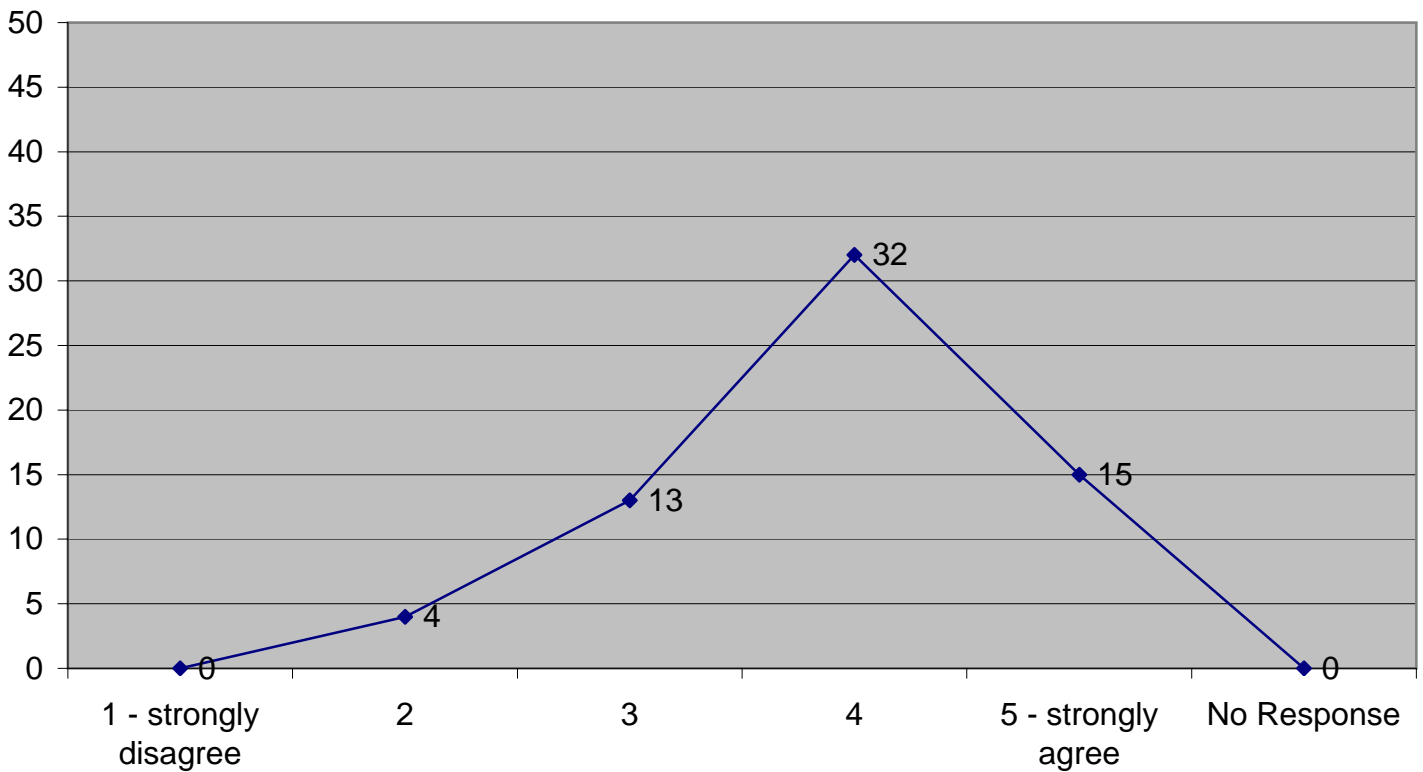
Values

Value 8c

I am helping people in my group by working through crises and issues



Actual Responses



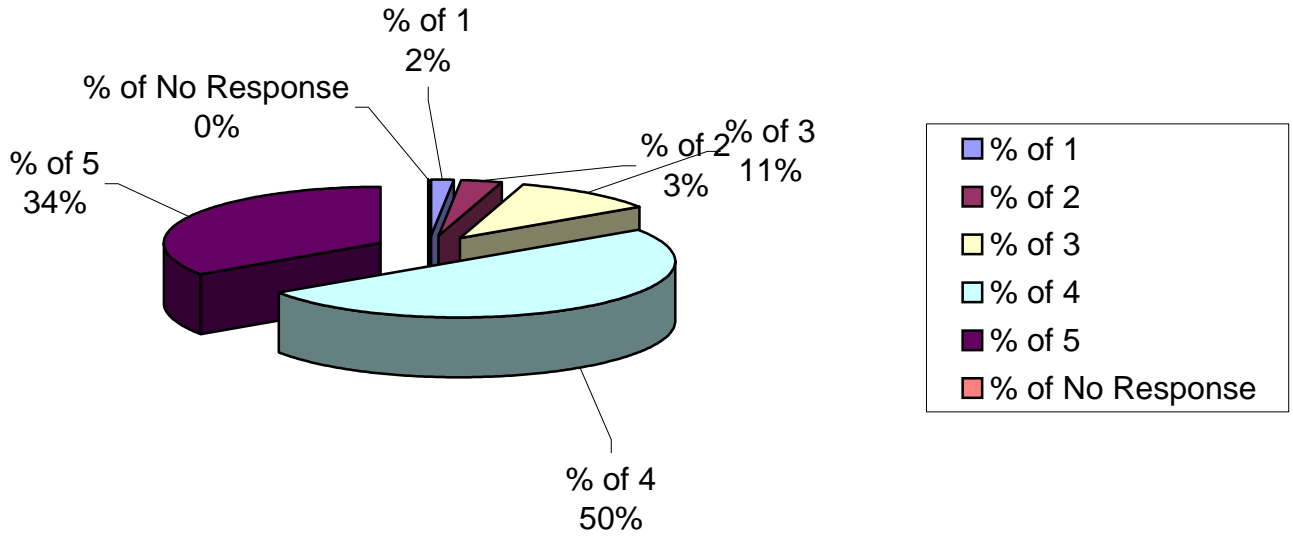
Values

Values

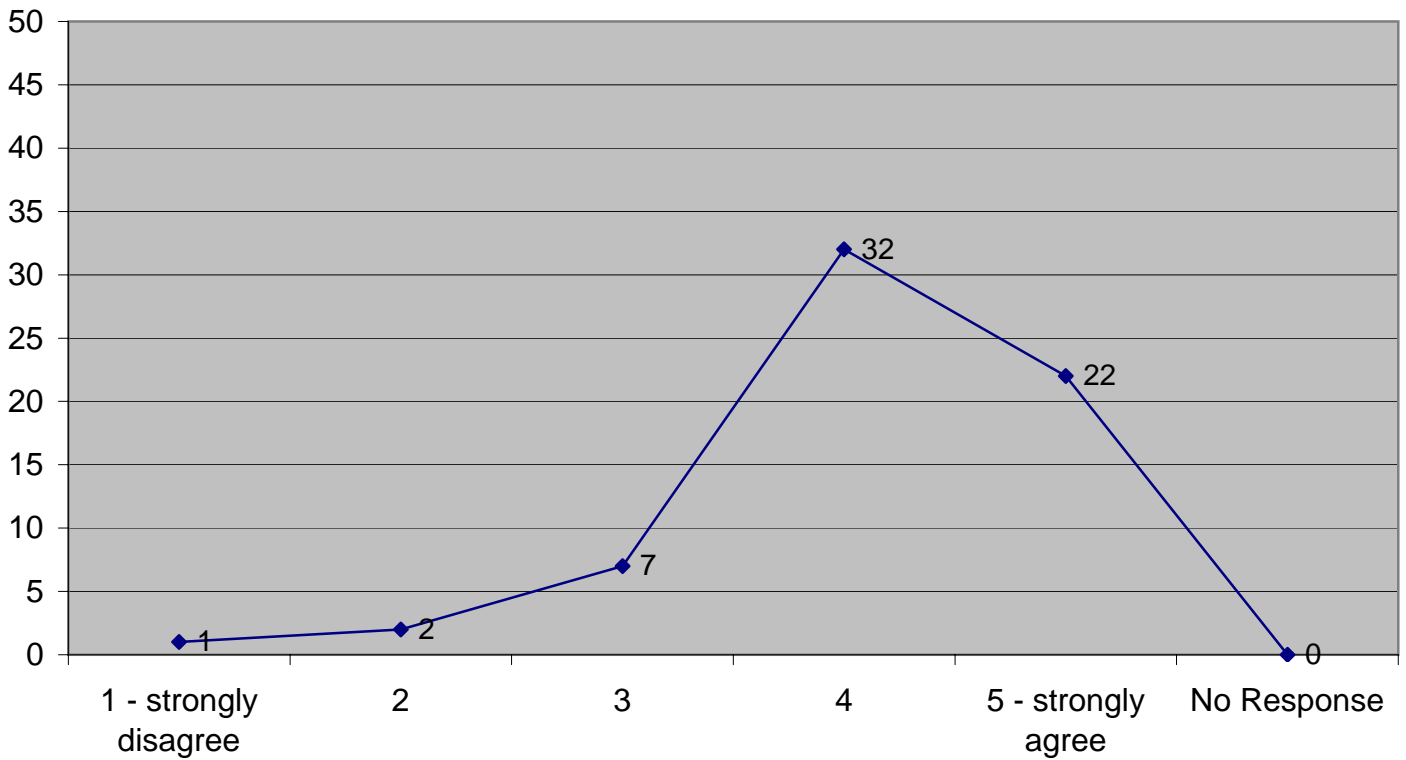
Values

Value 8d

I am helping people in my group by building authentic community



Actual Responses



Values

Comments on Value 8

2 We are blessed	15 We have a lot of new members so this process is just beginning	23 LC members building relationships, sharing prayer requests, enjoying meetings but still a challenge to make this more than a bi-weekly event. Would be helpful for leaders to get feedback on members "satisfaction" - ? GC oriented questionnaire. Are we meeting their needs? What can we (leaders) do to improve?	28 I can use help in encouraging others to consider leadership
29 I can use help in encouraging others to consider leadership	34 I am certainly trying in all these areas, and I take these responsibilities seriously. However, if you really want to know how I am doing in these areas you would have to ask our Life Community members.	37 Our diverse group is amazingly close	38 The community aspect is the perfect compliment of the worship services on Sunday
40 We have recently re-evaluated our group and the direction we wish to go in. This has provided a new focus and we are just beginning to integrate some of the above into our group	45 I can't honestly say that we've focused on helping people identify their gifts and use them. Mostly we've just tried to engage their level of service and engagement to Grace Chapel by having them help with some of the other ministry activities I lead (e.g. ESL)	46 Building authentic community is a work in progress. Our group is so new and with the fluctuation in attendance as well as new people joining the group it's a bit challenging. Doing the People Reaching People series was also a challenge in that it didn't leave much time for a relaxed time of personal sharing.	47 We don't talk about gifts much and since most of the people in our group are either new believers or not in a position right now to lead a group (one even commutes to our home from 45 minutes away!), we have not focused on either of these topics. I think the strength of our group is in our study of prayer and in praying together. Prayer is a central part of our time together.
48 Again, because of the size of our group helping others has been limited.	49 I think we are doing a good job of cultivating community, but we need to do more to cultivate new leaders. Don and I are burning out!	55 For the gifts and leadership questions, we haven't really been working too much on that. We often encourage people within the group to use their strengths, and we often give people the opportunity to learn to lead if they would like; but we are not actively pursuing either agenda. Our hope for our group is to foster a hunger and desire to study God's word so that His work in their lives would be reflected in their community living.	59 Some in group have really been struggling with big issues...our study this fall - If you Want to Walk on Water, You have to Get out of the Boat - by John Ortberg...has been a helpful series for them. Also, we have reached out to those hurting (as a group and as individuals)

Values

60

Our group is growing spiritually. It is a gradual process. We provide the environment for the holy spirit to do His work.

62

Our group has definitely rallied around some members in need and are helping people mature in their faith and be connected. Identifying and developing leaders has been hard.

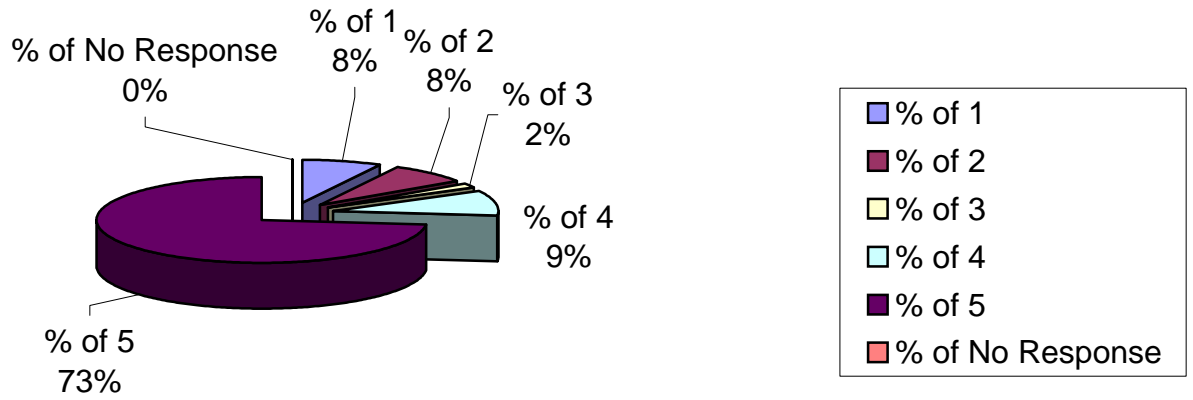
64

My sense is that our community is just now getting to know the difficulties that each of is experiencing in our families and we are responding in prayer and service to those needs.

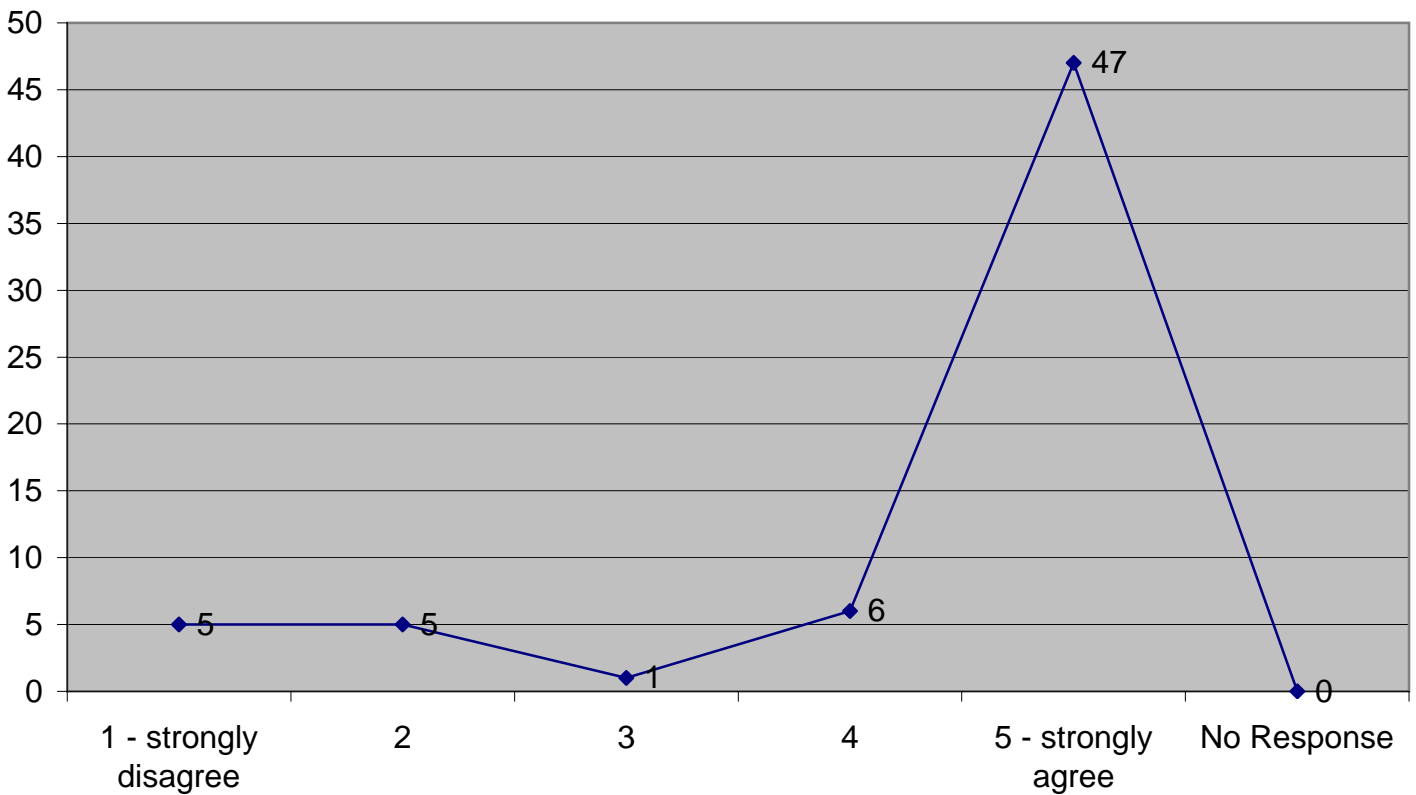
Values

Value 9a

Our group is open to receiving new people



Actual Responses



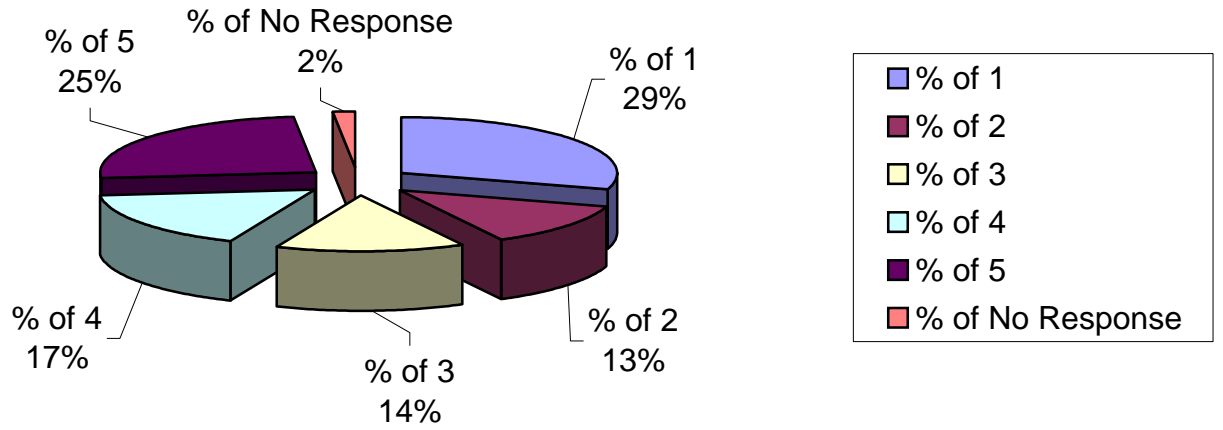
Values

Values

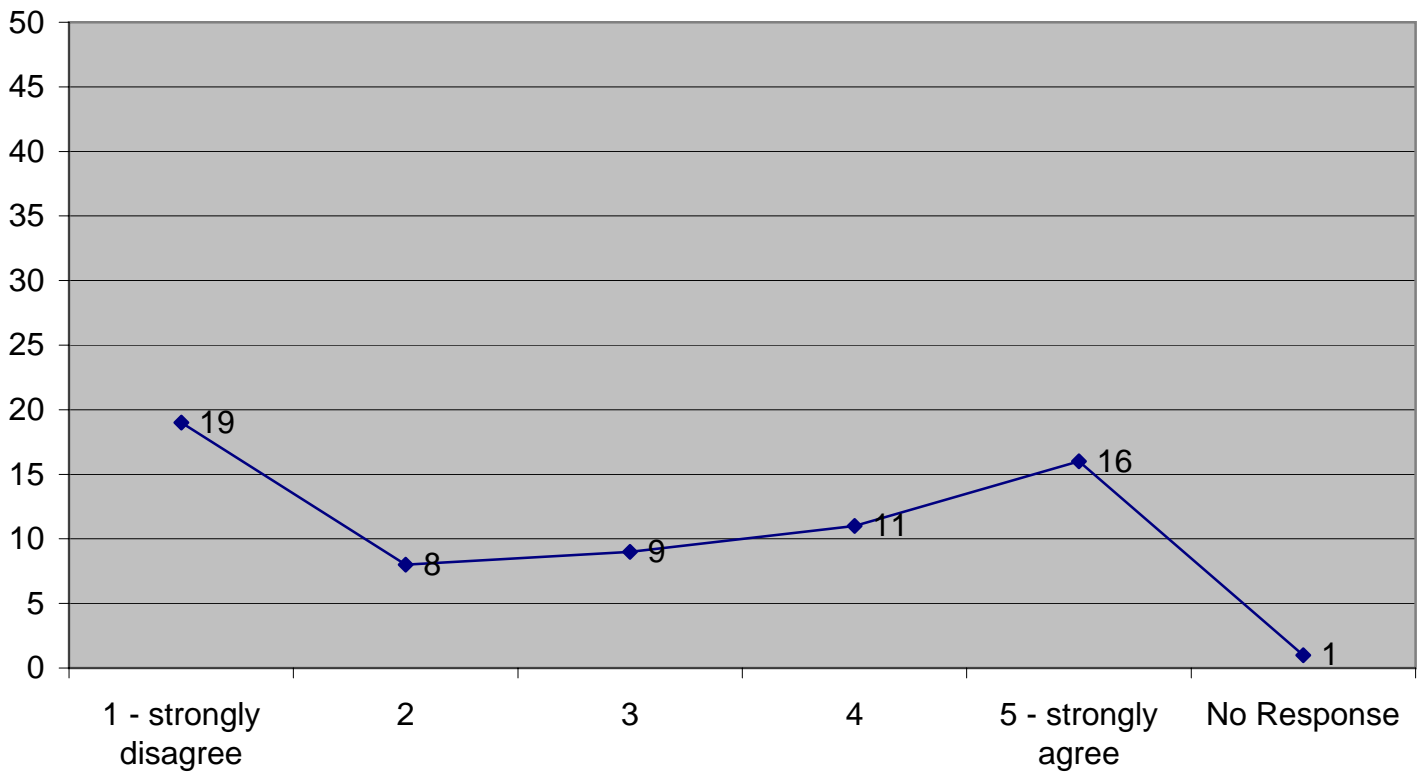
Values

Value 9b

Our group has new people visiting our group



Actual Responses



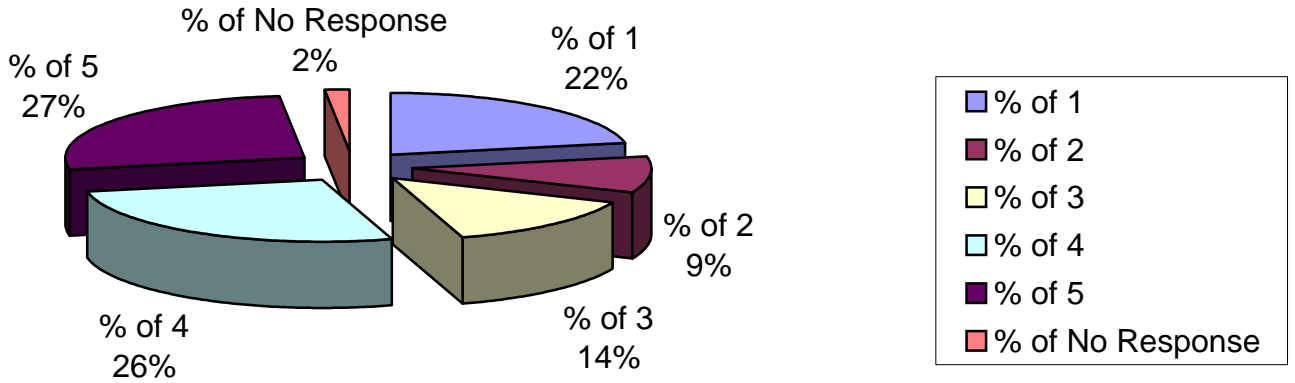
Values

Values

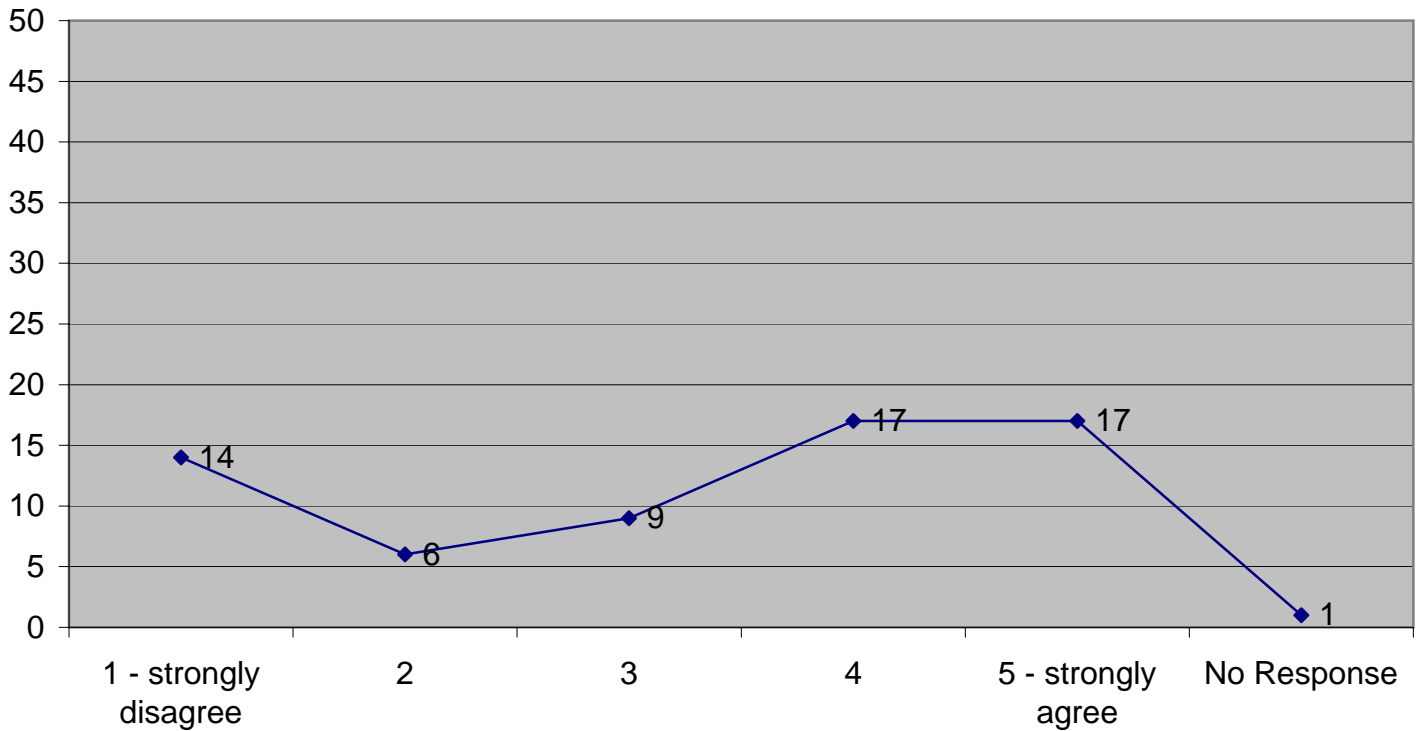
Values

Value 9c

Our group has new people joining the group



Actual Responses



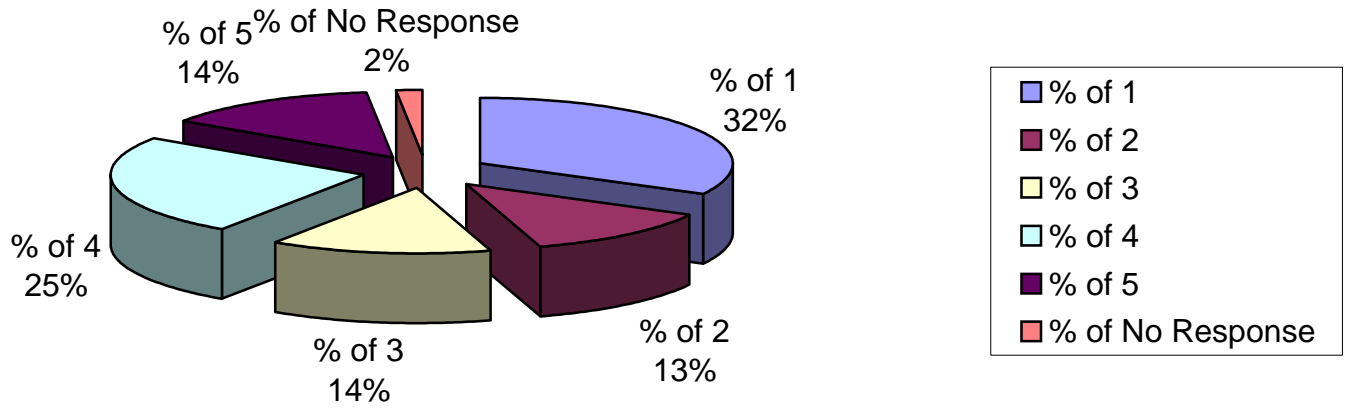
Values

Values

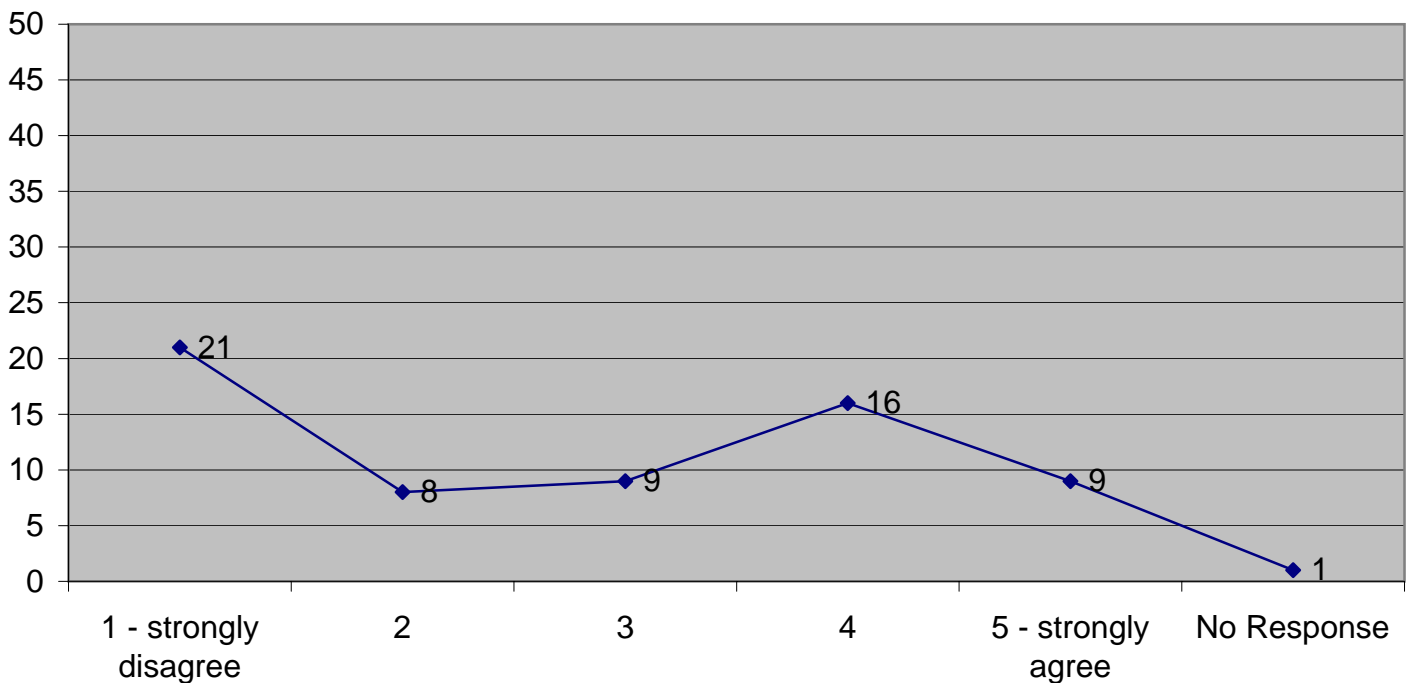
Values

Value 9d

Our group has new people regularly attending our group



Actual Responses



Values

Comments on Value 9

2

We are open as God leads people to us.

4

People are leaving because they are tired of it being such a large group and find new people coming in to be chilling to sharing

5

We have a small house which limits the size of our group to 12 people so when someone drops out we will fill that spot.

6

Currently at capacity

24

Not as many as we would like due to space constraints

28

We are too full to take on others as much as we'd like to.

33

Because the group is concerned that it might be already too large for intimacy, we have chosen to limit the size. We have had new people join (last years Rick Warren series for example. And a single woman whose group disbanded joined...while another woman dropped out.) God knows how many people our house can handle and He makes it work

34

As it has worked out, we have had new people on a relatively consistent basis and it seems to be working

37

We added one person this year who was invited by another group member of our group. Since we are already so large and our house is tight, we would prefer to grow from within right now.

38

Its kind of been a bit of a joke for the 4 of us that have been together from the start, but we have had at least 4 others join us for several weeks, and other who swore they would come and never showed up, but no one seems to "stick". We're confident that God will bring the right people at the right time but have never enjoyed how close the 4 of us have become.

40

What would the definition of "new" be? The 3's are because we have new people who have just heard of our group and are still in the visiting stage. I believe one of the families plans on staying, but it is too early to say for sure. The other will attend for the first time this week. Given our distance from the church and from each other we are not likely to see the group expand quickly due to lack of those attending the church from this area. My hope is that we will begin to reach out to neighbors and friends to expand our group that way.

41

Our group would accept new members but the people that I have been given to contact either can not meet on Thursday or were not willing to commit

Values

44

Everyone in the group has expressed interest in welcoming new members to our LIFE Community

45

We LOVE getting names from Elsie! The challenge is getting new people to stay - sometimes it's not a fit, but we've been blessed by a steady stream of people coming in and out. I think our established core or people like getting new people, which is awesome - no one is "closed off".

47

Joan and I have told Elsie to send us anyone at any time! We contact people right away and follow up with each person. We are happy to receive new people

48

We have contacted numerous leads provided to us but most have not responded to the invitation.

49

We've added a few new people lately. When I am busy, however, I don't do enough to call and follow-up with contacts we receive from Elsie. I'll call them, but then forget to contact them again if they do not return my call.

55

We have had several new people visit and then join. We do not have a regular schedule of new people attending. It often ebbs and flows. Our group has actually consisted of several different groups of people over the last couple of years as people have left the group due to moves and others have joined.

57

Even though our group has been meeting for more than 3 years, new people have come in as existing members moved on. We have added new members each year, and have connected with new "visitors" each year.

58

In the last year we've had 3-4 new people visit. None stayed. I don't always lead. Sometimes Lisa does and sometimes others have as well - particularly when I am traveling. Our members are fairly active in serving on their own and are always willing to assist in one time events.

59

Esther Freni invited her dear friend, Anita Thompson, to come to our group...she has felt very welcome - and comes whenever she can. She feels very much part of our group.

60

The new people have spotty attendance. I should be following up with them.

62

We have openings this year and thus far I have called two people to come and join us. Neither one has visited. One was a 43 year old single male who is looking for a single woman in her early 30's to settle down with and have children. He is disappointed that Grace Chapel will not allow him to attend the 30's groups. Told him I couldn't help him out with that either. :)

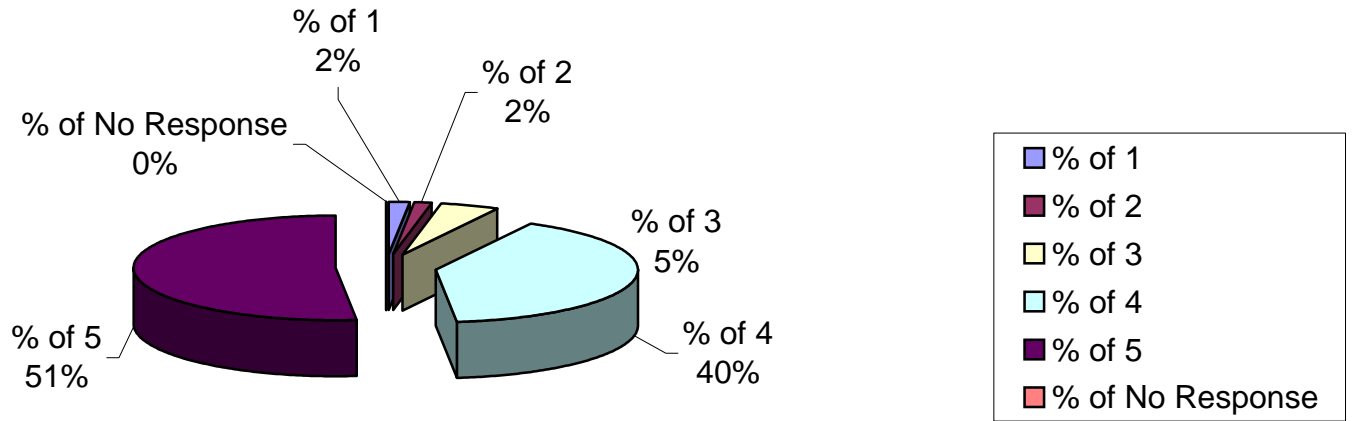
64

Two or three people have joined the group recently.

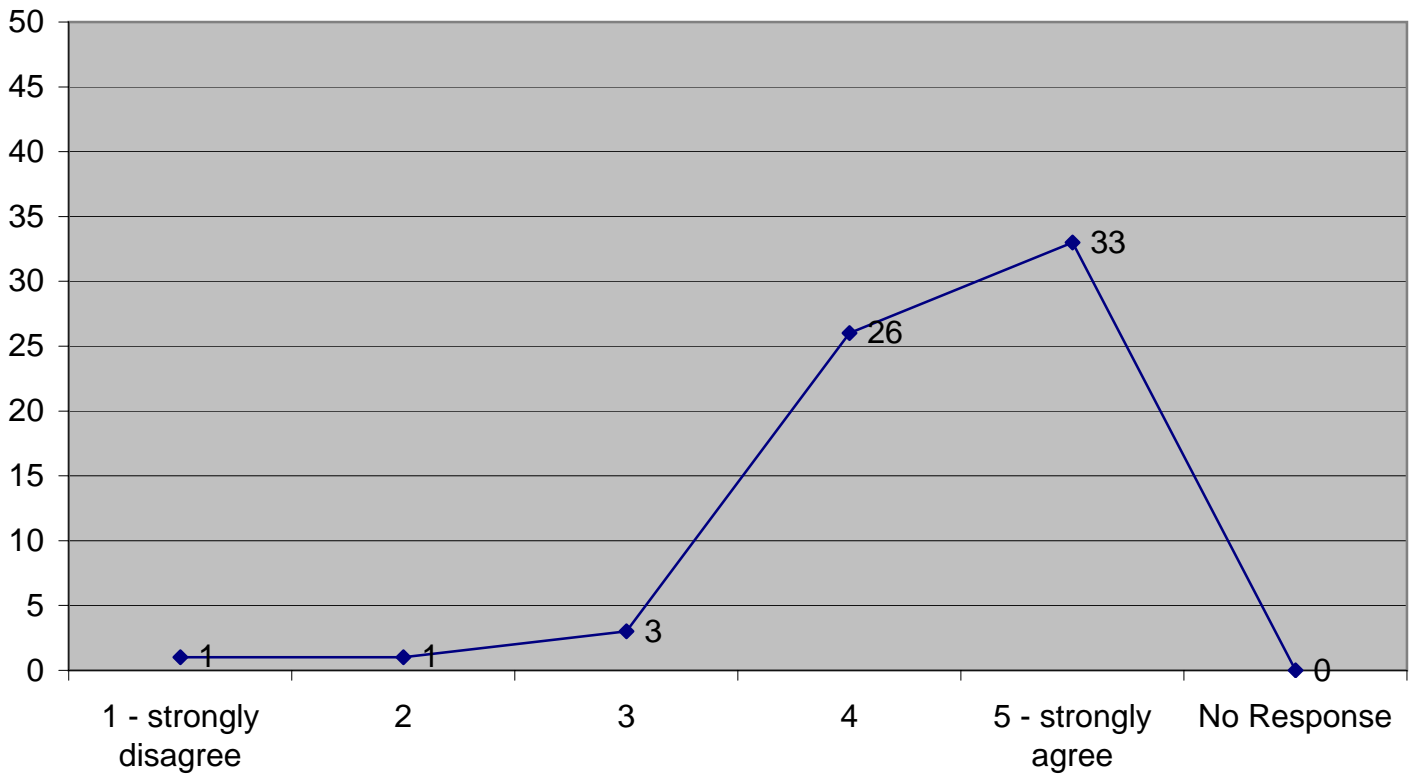
Values

Value 10

I am enjoying my experience as a LIFE Community Leader



Actual Responses



Values

Comments on Value 10

2

It is awesome - feel very
blessed

29

It's a real wow.

6

Ross is the leader, I am the
host and enjoy it very much

8

It's quite small - sometimes - 3-
5 people

28

It's a real wow.

Topical Responses

Question 1: Our LIFE Community would function better if the following needs were addressed:

Comments

<p>3</p> <p>1. Do usability study on website - make it more user-friendly. 2. Maybe it would help if get together provided relationship building time - have been focused on teaching that doesn't all fit this. 3. Formalize connection between leader/mentor and each LIFE Community</p>	<p>4</p> <p>1. We should have stopped when we were 16 or 17. 2. We are DVD's out</p>	<p>5</p> <p>Our LIFE Community group seems to function well and so far we see no serious needs.</p>	<p>8</p> <p>1. We need good thought provoking material - will be starting John Ortberg book - am excited having read it.</p>
<p>11</p> <p>We would like to see more mature Christians at Grace available to mentor others.</p>	<p>12</p> <p>More people (mature believers) available to mentor in our group</p>	<p>17</p> <p>Childcare is an issue that is not quite solved yet.</p>	<p>18</p> <p>Group is functioning very well and meeting spiritual and emotional needs of members.</p>
<p>19</p> <p>I really can't think of anything - sorry. We are just so thankful for the presence of this group and how God has used and changed it over the years.</p>	<p>20</p> <p>Had more people in the group</p>	<p>22</p> <p>1. If people were more consistence in attendance. 2. If we received better suggestions on what to study as a group. 3. Last years James study guide was not up to par in my estimation. 4. We still need to feel we are a "caring community"</p>	<p>25</p> <p>Conflict resolution</p>

Topical Responses

<p>27</p> <ol style="list-style-type: none"> 1. Team time designated more often - meaning our LC team. 2. Listing or resource support for counseling/care needs. 3. Childcare help 	<p>36</p> <p>We would like GC to refer others to our group from our surrounding area - those from Grace who do not have a group, etc.</p>	<p>38</p> <p>I think we are doing quite well. It's been nice to have more structured learning that matches Bryan's messages (REACCH, Jars of Clay). After the initial Rick Warren we were not quite sure what to do, so some structure is nice. (we ended up reading Chuck Colson's book "How Now Shall We Live" which was wonderful.</p>	<p>39</p> <p>Pray for us please. We have more and more families with children attending our Chinese speaking LIFE Community group, we are looking for resources for the kids so that we will have a meaningful meeting time for the kids too while the adults meet together. We are considering moving our meeting time (currently on Friday) to Wednesday so that our children would attend The Family Connection night program. Is it possible for the adults to find a room in the Church so that we can meet at the Church on Wednesday?</p>
<p>40</p> <p>One area the questionnaire did not address, possibly on purpose, is how the group itself is functioning. (Aside from this question.) I would have to say that the main frustration I find with the group, although to some degree it seems to slowly be changing, is it is very difficult to motivate people to get out of their cocoon of life and take time to reach out to others.. When there is a person going through a crisis, our members don't seem to reach out to each other in support outside of our meeting times. (even when they are specifically asked by me to do so.) Also, we had on-going service to a couple of local elderly families this summer and it was always the same people helping and everyone else was "too busy", or it wasn't "their thing". It is tough when the obligations of the group are agreed upon by the group but then are only carried out by a couple of people in the group. Outside of this I would have to say that things are going fairly</p>	<p>41</p> <p>At this time we are able to take care of our own needs</p>	<p>42</p> <p>A little larger meeting space would be nice, but we are managing.</p>	<p>43</p> <p>More people would join our group</p>

Topical Responses

<p>44</p> <p>We would function best if we have additional people joining our group. There were occasions when we had to cancel our meetign because only one other attendee could make it (in addition to the hosts).</p>	<p>45</p> <p>One of the things that I keep remembering is a comment Tom made last year to leaders: "even though you're the leader, you don't have to do everything." I think our biggest challenge is getting others in our group to step up, so that as a leader I don't have to do everything.</p>	<p>47</p> <p>I think Joan and I need to be better about delegating responsibilities (i.e. providing snack, following up with people, putting chairs back after the study is over, organizing a get together, etc.) We haven't asked though yet...I'm sure people would be happy to help if we asked them to do so.</p>	<p>49</p> <ol style="list-style-type: none"> 1. Develop new leaders 2. Babysitter
<p>55</p> <p>Our group seems to be doing pretty well right now. We don't feel anything needs to be addressed. As a general thought, we find that Grace does everything in its power to equip and enable its leaders. The training is always exemplary and plentiful.</p>	<p>56</p> <p>Worship. I have no idea how to get this going! Discipleship. Really excellent study notes that I could read and use when the group is uncertain about a piece of scripture.</p>	<p>58</p> <p>Maybe we're lazy - but I appreciate getting leads on new people interested in attending!</p>	<p>60</p> <p>more curriculum materials; (we research and purchase our own materials). There should be a library of materials online for leaders. Budget for paper products - suggest purchasing for year. This would be more cost effective for everyone. Bulk purchase for all Life Communities.</p>
<p>62</p> <p>Nothing really. You're all doing a fine job and we have no needs at this time.</p>	<p>64</p> <p>Pressure should be relaxed on serving the community at large and emphasis placed on serving one another first and then the community.</p>		

Topical Responses

Question 2: Tell us anything you feel we need to know that you have not already said

Comments

<p>1</p> <p>We are not a LC per se yet. We are continuing as a Grace group. We have opened ip to a new couple this past year.</p>	<p>2</p> <p>Our group is a love fest. We are open to share it with others. Send us more people. We will love them.</p>	<p>10</p> <p>We could use help with more detailed suggestions for topics/series to be studied. We have a groupof very mature believers, and even some of the REACH serries materials were quick work for them. We worked hard to poise even more challenging materials for them, but some additional help would be great. Weekly studies are great, but we find long term planning to be really helpful.</p>	<p>13</p> <p>Right now our group is small. I would really like to see more people coming in and I am sure it will happen with time.</p>
<p>14</p> <p>We feel well communicated to and supported by the LC team.</p>	<p>15</p> <p>Melanie and JT have done a great job expanding and finding new leaders for our group this fall. I/we need to work more intentionally at developing apprentice leaders. This is starting.</p>	<p>16</p> <p>The videos were kind of cheesy and poorly done. It might just be the FIRE generation, but we have high expectations.</p>	<p>17</p> <p>I defintely am enjoying my role in my LC group. Thank you for your leadership and encouragement in this type of ministry at GC.</p>
<p>19</p> <p>Lately, we have not had many new from Grace to our group. I'm not sure if this is because there are many new groups (prayerfully), which is ok with us or if you think we are not open to someone. We are always open.</p>	<p>20</p> <p>We have contacted by phone and mail all the new people that signed up in Sept and no one has come yet.</p>	<p>31</p> <p>The LC program at Grace Chapel is very well run and well supported. The video series People reaching People was wonderful and we all enjoyed it although 6 weeks in the fall was too laege a burden for our group since almost all our members have school age children. Thanks for all your resources and support.</p>	<p>33</p> <p>I think the LCs have become a vital part of the church. We have developed close relationship with people we never would have met in regular church context or in Sunday school classes. Our LC may be atypical, however. Our group consists of many people deeply involved in GC ministries (worship team, Intl Students, greeters, prayer teams, Women's ministries, Men's ministries etc). Our bonding is not geographically-based. We have members from Lexington, West Concord, Burlington, and Waltham as well as Bedford</p>

Topical Responses

<p>34</p> <p>I am curious about how my Life Community would evaluate my leadership. If you can figure out how to help that happen in a positive way that is non-threatening for them and affirming for me that would be great.</p>	<p>36</p> <p>We all like following the sermon series and the questions provided. Are answer sheets available?</p>	<p>37</p> <p>Thanks for asking for our input. We did feel the survey was a bit long...you may want to cut it down next year to ensure each person gives each question the time it needs. Thanks for all you do!</p>	<p>38</p> <p>perhaps I goofed as I'm just reading the comment at the end which says the survey is not for "assistants". I guess my wife Annie is the true LC leader and I'm her assistant.</p>
<p>39</p> <p>Thank you to you all</p>	<p>43</p> <p>It would be helpful if I get to see LIFE Community leaders on regular basis</p>	<p>44</p> <p>Just that it will be great if you can point other interested folks to our group. Thanks!</p>	<p>47</p> <p>I love our group and am so blessed to be a part of it. Sometimes I get tired in terms of set up and preparation, but when I'm with the whole group I am reminded of why this sort of corporate Bible study is so healthy and necessary. The people in our group are friendly and through our prayer times, I feel we are supporting each other. Our LIFE com. group has also recently (finally!) found its niche in the service component too! Our whole group has been pitching in at differnt ESL events both to bake desserts and to serve at the events. Since Joan and I are both on the Strategy Team of the ESL Ministry, this was a natural fit since we know what the needs are in ESL and can see how our group can help meet those needs.</p>

Topical Responses

<p>48</p> <p>We enjoy and are blessed by hosting and leading a life community in our home, however due to numbers being small we wonder if our group would be better of joining another group to provide better and more challenging dynamics to our lives.</p>	<p>52</p> <p>For the reasons stated above, this year has been a frustrating experience.</p>	<p>55</p> <p>Our only possible thought to pass on is that as leaders with young children who already attend two services because we also teach a Sunday School class, we don't find it possible to attend the numerous leadership events you're always suggesting we attend. To add a third service by going to a 11:15 am meeting is hard on the children. To go to an evening event which is past their bedtime or doesn't have childcare is also difficult. As a result we often do not attend the leadership events, which actually does not bother us; but we do find it tiresome to always receive emails about the fact that leaders are strongly encouraged to go to these events which simply don't fit into our life schedule at the moment.</p>	<p>56</p> <p>I feel very blessed to have been given this challenge, but I feel a little anxious each week about whether I am up to the task. How about creating a LIFE community leaders' prayer group?</p>
<p>58</p> <p>I don't lose sleep over this - and it's not an issue for us but is there a need to "check-up" that group leaders are qualified and faithful to teaching God's truth? How do you, GRACE, known that group leaders aren't going off on some wacky tangent or teaching some ideas that might be a little suspect? Maybe it's not an issue - I don't know.</p>	<p>59</p> <p>We are sorry we did not complete this survey earlier. We have been out of town a lot - and then very busy when we've been here. We are grateful to God for the opportunity to be involved as LIFE community leaders.</p>	<p>60</p> <p>Thanks for all you do. Hope my suggestions help.</p>	<p>62</p> <p>Feedback on the recent People Reaching People group. Thumbs Up - Everyone really enjoyed seeing Pastors as people, who struggle just like they do with witnessing to others. Nice job putting it all together. Appreciated the hard work that went into making the series. Thumbs down - The series was too long. Dragged on. Could have been completed in half the time.</p>
<p>63</p>	<p>64</p>		

Topical Responses

<p>Honestly, starting out the church year with 6 straight weeks was a stretch for us and for our members, given a lot of other stuff happening. We enjoyed the REACH series, but perhaps the later lessons were a little repetitive and our attendance decreased in the later weeks.</p>	<p>Tremendous hurt and separation within families within our community. One host family last year has separated and is going thru a divorce. One is experiencing tremendous illness-cancer. Two are in unequally yoked marriages. Lots of needs and this is the tip of the iceberg.</p>
--	---