

## TIME PEACE

How do you feel about TIME? Is it your friend...or a constant, frustrating enemy? Do you feel guilty, stressed, behind and hindered? God made time. He made enough time, today, for you to do His will for today. Time needn't be our enemy or our master. It can be our friend.

"Whatever we are waiting for—peace of mind, contentment, grace, the inner awareness of simple abundance—it will surely come to us, but only when we are ready to receive it with an open and grateful heart. Gratitude arises in that in-between space where the inner and outer worlds meet and touch and encompass each other."

Ellen Vaughn

Register early! Don't miss out! Join us at Winterlude this year and discover how to make peace with the speeding passage of time!!

**January 18-20, 2008**



Have you registered for:

- Morning Joy
- Evening Joy
- Mom to Mom

For information on these programs and events go to...

[www.grace.org/women](http://www.grace.org/women)

**GRACE**  
C H A P E L

59 Worthen Road, Lexington, Massachusetts

MINISTRY OFFICES: 3 Militia Drive, Lexington, MA 02421

Telephone 781.862.6499 TTY 781.674.2825

[www.grace.org](http://www.grace.org)

**WOMEN'S MINISTRIES 781.862.8351, x149**

GRACE CHAPEL

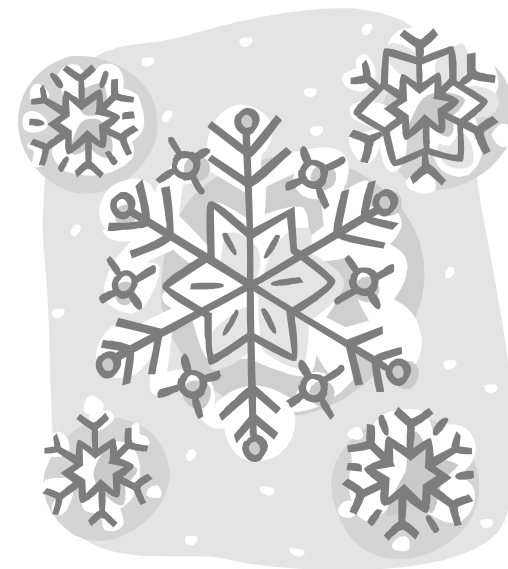
# Winterlude

**2008**

**Women's Retreat**

January 18-20, 2008  
The Sea Crest Oceanfront Resort  
North Falmouth, MA

WOMEN'S MINISTRIES



**Time:** a span designated for a given activity

**Peace:** harmonious, inner contentment, serenity

## TIME PEACE

### Winterlude 2008

A weekend set aside, just for you! A span of time designated for you to seek inner joy and contentment because you are seeking God and His wisdom and direction.

## SPECIAL SPEAKER

Ellen Vaughn is an award winning author and speaker. A much sought after conference speaker, Ellen challenges people to look at life in a new and refreshing way, to savor the moments, to celebrate the journey. Through engaging stories and unusual insights, Ellen will lead us on an exciting adventure discovering new truths about ourselves and God. With humor, depth, and a unique perspective, Ellen will help us understand how we can live with real peace in a time-stressed world. She lives in Virginia with her husband Lee, children Emily, Haley and Walker, an enormous dog named after C.S. Lewis, and a small emergency back up pup named Gus.



## SPECIAL MUSIC

Once again we are delighted to welcome **Sweet Rain** to Winterlude. Lead singer Jamie Longo, along with Wendy Hunt and JoAnne Lotorto will draw us into His presence with joy and celebration as we sing praises to Him. Bring your heart (whatever condition it is in) and your smile (it's there somewhere) and of course, bring your dancing shoes (even if you don't know how to dance!!).



Are you a returning Winterluder? Why not invite someone to join you for the weekend!! Share the excitement, the blessings, and the memories!

### Special 2008 Winterlude Offering

We will be "building" an orphanage in India, and it will be called "Winterlude Orphanage!" Watch for more details.

"He has made everything beautiful in its time..."

Ecclesiastes 3:11

car and road picture

## SEE YOU AT WINTERLUDE!

Looking for a *timely gift* for a friend, relative, co-worker? Winterlude Gift Certificates make wonderful birthday, Christmas, or "just because we're friends" gifts. We will custom gift wrap also!!! For information, contact Carolyn at 781-862-8351 x149 or email: [carolyn@grace.org](mailto:carolyn@grace.org)

## Winterlude Registration January 18-20, 2008

Name \_\_\_\_\_  
Address \_\_\_\_\_  
City \_\_\_\_\_ State \_\_\_\_\_ ZIP \_\_\_\_\_

Tel: { } \_\_\_\_\_

E-mail \_\_\_\_\_

Church \_\_\_\_\_

City/State \_\_\_\_\_

ACCOMMODATIONS - total room price per person - Check all applicable

Single - \$260 ea.  Double - \$180 ea. Roommate: \_\_\_\_\_

Triple - \$155 ea. Roommates \_\_\_\_\_

Roommates \_\_\_\_\_

Quad - \$145 ea. Roommates \_\_\_\_\_

Roommates \_\_\_\_\_

Additional Requests:

Minimal walking distance

I would like to help at the retreat

Baptism information

EACH ROOMMATE MUST COMPLETE SEPARATE REGISTRATION FORM - Please mail together!

Check one:  Non-refundable room deposit - \$75 PER PERSON or  Full payment enclosed

**FULL PAYMENT - no later than Dec. 2nd**

ALL roommates must be paid in full by 12/2 to be considered registered OR we will release your room!

Amount enclosed \$ \_\_\_\_\_ + Scholarship donation \$ \_\_\_\_\_

Make checks payable to: GRACE CHAPEL Mail: Candy Gordon, 285 Davis Road, Bedford, MA 01730. 781-275-6109 evenings only

Send upper portion only

### Winterlude

The Sea Crest Oceanfront Resort & Conference Center  
N. Falmouth, MA  
January 18-20, 2008

Pick-up Registration Packets beginning 3:30 PM Friday

First Session begins after dinner - 7 PM

Registration includes:

Conference Accommodations 4 meals

Note: Saturday & Sunday lunches are not included  
& session ends noon, Sunday

REGISTER Early - spaces fill quickly - maximum capacity is 540 women and we use the entire hotel! When we reach capacity you may be placed on a wait list. Don't wait!

Further details (directions, what to bring, etc.) will be sent to all registrants soon after January 1st.

We apologize, but we cannot accommodate young children, including breast feeding infants. The weekend is a gift for you to be away from the everyday activities and your busy schedule!

### Pricing

Single: \$260 Double \$180 ea.

Triple: \$155 ea. Quad: \$145 ea.

A \$75.00 deposit per person (or full payment!) is required with your registration form. Each roommate must complete a separate registration form and they must be mail together! Unless full payment is received by December 2nd, you will not be considered registered.

#### ROOMMATES

Must complete a separate registration form. Please submit all forms together. Individual or single check for group is acceptable. If group check, clearly note how much is designated for each person.

No shows are not refundable as we must honor our guarantee to the hotel, this includes events due to inclement weather. Registrations are transferable; however, the woman taking your spot must accept your original room accommodation.

Questions about your registration:

Make checks payable to: GRACE CHAPEL

Mail: Candy Gordon, 285 Davis Road, Bedford, MA 01730.  
781-275-6109 evenings only

Note: A limited number of confidential, partial scholarships are available by completing a Winterlude Scholarship Form.

Please make a note on your registration form and you'll be contacted.