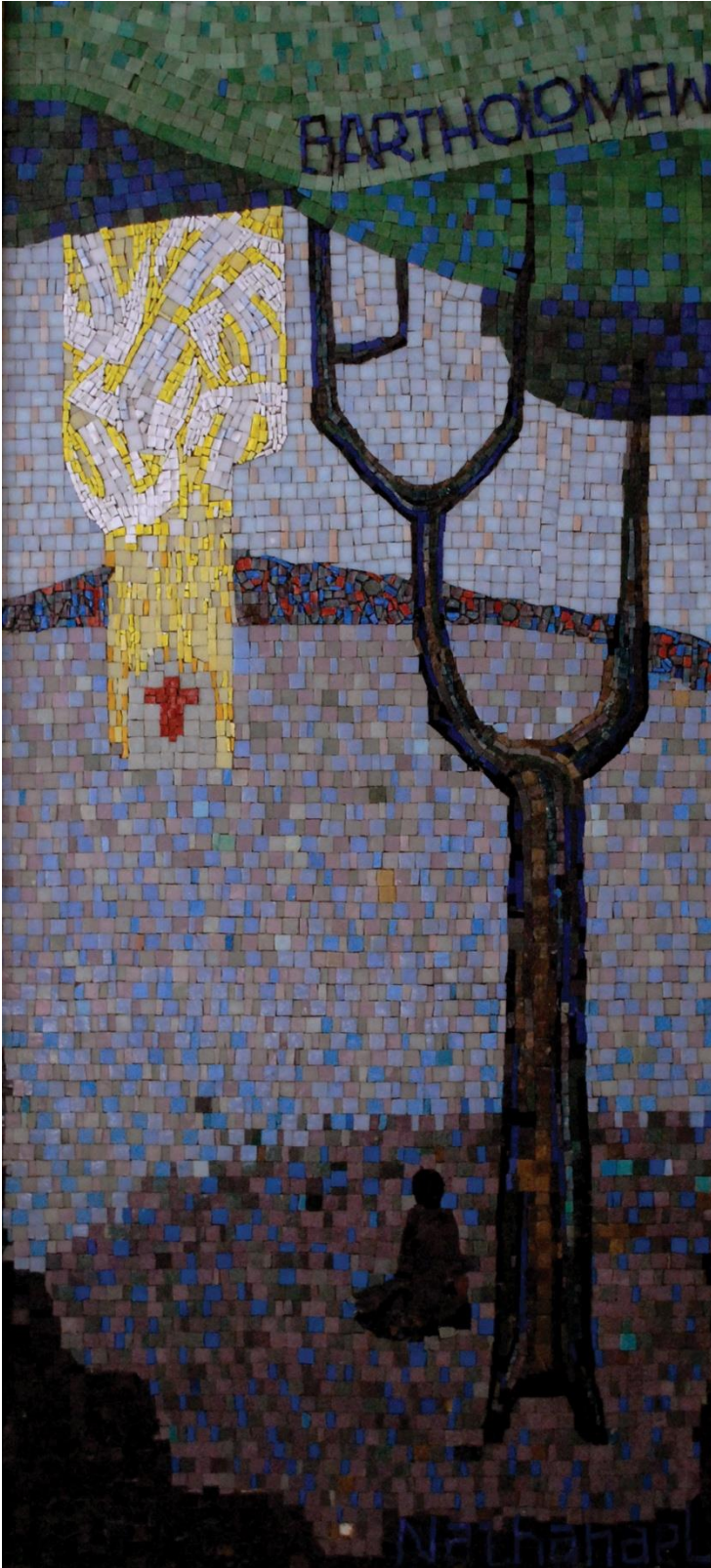


The Panel of Bartholomew Room 301



Read John 1:43-51 & Genesis 28:12,13

Look at the Panel and make your observations:

1. What mood do the subdued colors created to the observer?
2. Who is the person sitting under a tree?
3. List the 2 names found on this panel. (Note that they refer to the same person.)
3. What do you suppose that person is doing who was sitting under the tree?
4. Which disciple went to speak with this person?
5. What do you know about a fig tree?
6. What was Bartholomew's opinion a Messiah coming from Nazareth?
7. What was Jesus' impression of Bartholomew?
8. What convinced Bartholomew that Jesus was the Son of God?
9. On the left side of the panel, what do the white objects set inside the yellow tile represent?
10. What does the yellow color represent?
11. What does the red cross represent?
12. Find the words that tell the places to which Bartholomew traveled with the gospel.
13. The message of the panel:

In memory of Mr. and Mrs. Charles A. Heidelberg