



# The BRIDGE

VOLUME LI  
NUMBER 22

GAINESVILLE FIRST UNITED METHODIST CHURCH

MAY 31, 2009



Getting off to a good start is so important. In my younger days, I was fast sprinter. I especially loved competing at school in the 100 yard dash. I learned early that the key to winning the race was to be quick at the starting line. If you were slow in the start, it was almost impossible to win the race. It was very difficult to recover from a hesitant start in only 100 yards. In baseball, an infield hit is only possible if the batter gets a good start out of the batter's box. If the batter slips or starts sluggish from his/her batting stance, then almost assuredly what could have been an infield hit turns into an out. Getting off to a good start is so important.

We are off to a good start in our **Irresistible Invitation** stewardship emphasis. Last year, during the first week after Giving Sunday we received 384 estimates of giving for a total of \$1,978,511. This year during the same time frame, we have received 406 estimates of giving for a total of \$2,079,539. We are off to a good start. Thank you for your prayerful and faithful response to the extravagant heart of God.

We are in the follow up phase, and need those of you who have yet to respond to this **Irresistible Invitation** to express your prayerful and faithful response as soon as you can. Someone asked me "What is our goal?" Our goal is both spiritual and tangible. Our spiritual goal is for everyone who calls Gainesville First United Methodist Church their church home to estimate their financial intentions for the cause of Christ through GFUMC for July 1, 2009, through June 30, 2010. The estimate of giving is a response to God's extravagance toward us. It is a response to the invitation of Christ to be His body in the world. We are invited to be God's instruments in the reaching, helping, and loving of others in our community and world. Our financial treasure is the grease that lubricates the wheels of mission and ministry in the name of Christ through Gainesville First United Methodist Church.

Tangibly, it is important to know that through your generosity last year our 2008/2009 ministry was able to be resourced at \$3,100,000. I am praying that we will at least meet this tangible goal so that our ministry together can continue forward. We are off to a good start, yet we have a ways to go. During this follow up phase of **Irresistible Invitation**, I want to thank you for your continued generosity. Together we will meet all our goals and then some. All for God's glory and for the forward movement of God's loving work on earth.

Be a Blessing,

Join us in the **Celebration of Confirmation** this Sunday, May 31, as we welcome the newest brothers and sisters into the body of Christ at GFUMC. Congratulations to all our confirmands and their families.

## Worship Services

"Raise Your Voice"  
Acts 2:1-21  
8:30 Lakeside &  
10:55 a.m. Sanctuary  
Dr. Terry Walton

*Loving and Serving God as  
We Love and Serve All People*

WHAT'S IN A NAME SERMON SERIES  
"Holy Spirit: Mighty Wind"  
Acts 2:1-12  
9:30 & 10:55 a.m. Living Waters  
Rev. Wendy Cordova

## MEMBERSHIP NEWS

### ATTENDANCE 5/24/2009

8:30 a.m. Lakeside . . . . .	383
9:30 a.m. Living Waters . . . . .	65
10:55 a.m. Living Waters . . . . .	121
10:55 a.m. Sanctuary . . . . .	361
<b>Worship Totals . . . . .</b>	<b>930</b>
Sunday School . . . . .	413

### CONGRATULATIONS!

**Wesley Joseph Braham** was born on Thursday, May 21, 2009. Proud parents are Brian and Meredith Whitmer Braham. A rosebud will be placed on the altar this Sunday in his honor.

### BAPTISM

**Lee Bradford "Ford" Dempsey** will be baptized this Sunday during the 10:55 a.m. Sanctuary service. His parents are Lee and Anna Dempsey.

### CHRISTIAN SYMPATHY

...to **Vicki Holland** on the death of her grandmother.

### MEMBERSHIP NEWS

In order to protect the privacy of our members we will not print the information that is normally listed under this heading in the online version of *The Bridge*. If you are a member of GFUMC and would like to have access to this information, please contact Jackie Powers at 770.536.2341.

## NEW! SUMMER BIBLE STUDIES



### THE WAY OF TRANSFORMING DISCIPLESHIP

*The Companions in Christ Series*

**Tuesdays, June 9 - July 14, Room S-01**

What does it mean to be an authentic Christ-follower? Explore the following themes: knowing who you are, changing from the inside, listening to the groans, experiencing the God who heals, and discovering community together.

Choose to attend the morning study (11 a.m.-12 noon) or the evening study (6:30-7:30 p.m.). Childcare provided with a reservation. Call the Church Office at 770.536.2341 to register. Led by **Wendy Cordova**. Cost: \$8/book.

### MEN'S BIBLE STUDY

**Tuesdays at 7 a.m. in the Reception Hall**



Join **Dr. Terry Walton** to explore the life lessons that await men who are seeking to follow God's leading today as he begins a study of Old Testament books of Esther and Ruth. The new study begins, **Tuesday, June 2** and continues through August; however, the Men's Bible Study will not meet during the month of July. A light breakfast is served. No cost to attend. Ends promptly at 8 a.m.

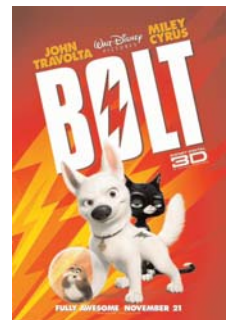
### THE DOG DAYS OF SUMMER

**Wednesday, June 3 - "Bolt"**

**Family Dinner 5 - 6:15 p.m. in the GREAT Room**

Turkey and ham sandwiches, chips, pasta salad, potato salad, fruit salad, and an assortment of cookies.  
\$6 per adult / \$3 per child / \$20 maximum per family

**Showtime begins at 6:30 p.m. in the Youth Hall**



Children may wear their pjs and bring their pillows and blankets to watch the movie comfortably on the floor. Register online at [gfumc.com](http://gfumc.com) or by calling **Mildred Smith** at 770.536.2341, ext. 143.

### NEW SECURITY MEASURES NECESSARY

As you may have read or seen in the media, our church buildings have been broken into and we have been robbed during the past week, probably multiple times, and at least once during the daytime. As a result of working with the Gainesville City Police Department, several new security measures have been put into place to improve safety for our parishioners, staff, and buildings. On Sunday mornings all entrances will be unlocked and open. During all other business hours, only the Sanctuary and Methodist Activity Center (MAC) entrances will be continuously unlocked. Other doorways may be opened for specific programs at specific times, but those entrances will be monitored. All entrances will be locked at 8 p.m. each evening. We will all have to adjust to using the two main entrances to our church buildings. Please continue to use good personal safety practices whenever you are on campus! Our Trustees Board is working to improve campus security. Your cooperation and understanding are appreciated.

*Steve Winter, Executive Pastor*





## VACATION BIBLE SCHOOL

June 15 - 19

8:45 a.m. to 12:10 p.m.

Kindergarten - 5th grades

Register in the Gathering Room on Sunday mornings, in the Church Office during the week, and online anytime at [www.gfumc.com](http://www.gfumc.com)!

We want ALL children to fully participate in church activities.

If your child experiences challenges in group settings, and you believe a special buddy for your child during VBS would be helpful, call **Debbie Morris** at 770-536-2341, ext. 105 to make arrangements.

## RECREATION



### DRAGONBOAT RACE

Next practice - Saturday, June 13

Next race - Saturday, June 20

Lake Lanier Canoe & Kayak Club

Are you interested? There is still time to sign up for this team.

Contact **Vicki Bailey** at 770.536.2341 or [vbailey@gfumc.com](mailto:vbailey@gfumc.com).

## OLDER ADULT MINISTRY

### GADABOUTS

Wednesday, June 3

**Bobby Watson**, composer of Gospel music and former music director, will sing some of his original Gospel pieces.



### AARP DRIVING CLASS

Saturday, June 13

9 a.m. – 4 p.m. in the Adult Lobby



Three reasons to take the AARP Driving Class: Tune up your driving skills. Drive more safely. Get an insurance discount. Though geared for drivers age 50 and older, the course is open to people of any age. AARP membership is not required to attend. There is no final test to pass. Call **Pam Spivey** at 770.536.2341, ext. 139 to register. Bring your lunch, driver's license, and AARP card if you have one. Cost is \$12 for members of AARP and \$14 for nonmembers.

### GFUMC TRAVELERS

*The Biltmore at Christmas*

November 18 - 19, 2009



Join us for a two-day, one-night trip to Asheville, North Carolina, to tour the Biltmore House for the candlelight tour of Christmas lights. Spend the night at the Grove Park Inn and see the national competition of gingerbread houses. Cost is \$339 per person includes travel by deluxe motor coach, all meals, lodging, and tours. Contact **Jane Lower** at 770.535.8418 for additional information and to reserve your place. A deposit of \$100 is due by August 15, with the balance due by October 1.



### LOW COUNTRY BOIL & CRYSTAL RIVER

#### BLUEGRASS GOSPEL BAND

Monday, June 22, 2009

6 – 7:30 p.m., Reception Hall

Tickets are \$6 each and must be purchased from **Pam Spivey** in the Church Office by **Monday, June 15**. You must have a ticket to eat. Seating will be provided for those who do not want to eat. A love offering will be taken. Sponsored by Fifty Plus.

## 1ST PLACE CLASSIFIED ADS

**NEW ITEMS RECENTLY LISTED!**

Check them out at [www.gfumc.com](http://www.gfumc.com)



The 1st Place Classified Ad listing is intended to help our congregation and visitors to our website, buy and/or sell items. Submit your items for sale online, or use the paper form available on the community bulletin board in the hallway across from the Library. Look for the blue ribbon on the website! Make [www.gfumc.com](http://www.gfumc.com) your **first place** for classified advertising!

## A NEW SONG

### COMING IN JUNE

#### Lakeside Music Schedule



**June 7** - The Chancel Choir will sing an energetic setting of Isaiah 44:22-24 called *The Lord Hath Done It!*

**June 14** - The Believers Band will provide the special music and accompany the hymn singing.

**June 21** - The Sunday Bluegrass Band, newly revamped, will play for the hymns, pre-service music, and offertory.

**June 28** - The Chancel Choir will return with a jazzy musical setting of Psalm 150, *Let Everything!* and the gospel spiritual, *Stayed on Jesus*.



### YOUTH CHOIR Homecoming Concert Sunday, June 7 6 p.m. in the Sanctuary

Join us for this special concert as we welcome the Youth Choir home from its recent Music and Mission Tour.

## GFUMC WILL HONOR VETERANS



### PATRIOTIC DAY

Sunday, June 28  
4 - 7 p.m.

Patriotic Day is on the way! Come and enjoy the flotilla, scavenger hunt on the lake, kids' activities, recognition of veterans, and much more. Food will be provided by **The Varsity** for a cost of \$5 per person. Look for more details to come later.

As part of Patriotic Day, we would like to honor all our veterans. Please call the Church Office or send an email to [vbailey@gfumc.com](mailto:vbailey@gfumc.com) to give us the name, rank, branch of service, and years of service (*ex. 1994-present*) of veterans who are affiliated with GFUMC. You do not have to be present to be recognized.

## NEW COLLEGE MINISTRIES

### COMPEL WORSHIP SERVICE & SMALL GROUPS

Tuesdays at 7 p.m. in the Reception Hall

If you are college age or have a college-age child, then you really need to check out **Compel**, our new worship service for young adults. Come and experience great fellowship, live music, relevant teaching, and small groups.

### COLLEGE SUNDAY SCHOOL

Our new college Sunday school will begin meeting this Sunday, May 31, in Room S-37. Leading the class this summer will be **Jeff Black**, **Butch Bennett**, and **David Burchett**. We are looking forward to a great summer with all of our college-age young people.

## STUDENT MINISTRY

### SUMMER JUMPSTART

Join us for summer Jumpstart which will meet every Monday throughout the summer for lunch and an activity.



High school students will begin meeting on Monday, June 1 at 11:30 a.m. for lunch and a movie. Middle school students will begin on June 8.

## PRAYER PAGER MINISTRY



*Let these people know that you are thinking of and praying for them.*

Pray! Dial the pager number of the person for whom you have prayed. You will hear 3 beeps. Dial 111# and then hang up.

**Mike Adcock**  
770.201.0319

**Wendy Pittman**  
770.201.0626

**Diana Cindea**  
a friend of Lora Cooley  
770.201.0121

**Faye Shadburn**  
770.201.0429

**Margot Mickle**  
770.201.0320

**Katie Tulin**  
1.800.225.3412

Prayer Pagers are available for you or a friend to use. If you would like to receive a Prayer Pager, please contact **Rev. Wendy Cordova** at 770.536.2341.

## HEALTH & WELLNESS MINISTRY

### RELAY FOR LIFE

June 5 - 6, 2009

7 p.m. - 7 a.m. at Road Atlanta



Relay for Life is a fun-filled, overnight event that empowers everyone to help fight cancer by raising money and awareness to support the American Cancer Society's lifesaving mission. It's not too late to be a part of the GFUMC team.

For more information, contact **Lori Floyd**, Parish Nurse, at lfloyd@gfumc.com or 770.536.2341.



### PERSONAL PROTECTION & SAFETY CLASS

Sundays, June 7 and June 14  
5 - 7 p.m. in Room S-14

This two-part class will teach you ways that you can be safer in your home, car, and in public places. Sign up by calling **Pam Spivey** in the Church Office at 770.536.2341. There is no cost to attend. Facilitated by **David Squires**.

## COMBINED ADULT SUNDAY SCHOOL



### AT THE MASTER'S FEET: THE LIFE AND TEACHINGS OF JESUS

Sundays, beginning June 7  
10 a.m. Adult Lobby

Come early for fellowship,  
coffee, and donuts at 9:45 a.m.

**June 7**

*On the Road*  
Luke 24:13-35  
Debby Fox

**June 21**

*Doubting Thomases*  
John 20:24-31  
Nancy Perkins

**June 14**

*Seize the Day*  
Matthew 6:11, John 9  
Jack Carrington

**June 28**

*The Trouble with Forgiveness*  
John 8:1-11, John 5:1-15  
David Lee

*This study will continue through July.  
For more information, contact Rev. Debby Fox.*

# Calendar

MAY 31 - JUNE 7, 2009

### SUNDAY - May 31

8:30 Lakeside Worship  
9:30 Confirmation Brunch  
9:30 Living Waters Praise & Worship  
9:30 VBS Training  
9:45 Sunday School  
10:55 Living Waters Praise & Worship  
10:55 Sanctuary Worship  
4:00 Youth Choir Rehearsal  
5:00 Disciple II  
5:00 The Five Love Languages Study  
5:00 The Harbor  
5:00 Older Adult Trip  
7:00 MSL (Methodist Sports League)

### MONDAY - June 1

8:00 Fitness Club  
9:00 Emmaus Prayer Group  
9:00 Methodist Men Cooking  
9:15 Aerobics  
10:00 UMW: First Monday Circle  
6:30 Outreach Visitation Meeting  
7:00 Troop 16 Scout Meeting  
7:30 Men's Basketball

### TUESDAY - June 2

7:00 Men's Bible Study  
8:00 Fitness Club  
8:30 Intercessory Prayer Group  
9:00 Christ Centered Yoga  
9:15 Aerobics  
9:30 Believers Band Practice  
7:00 Compel - College Age Worship  
7:00 Mission Action Meeting

### WEDNESDAY - June 3

8:00 Fitness Club  
9:15 Aerobics  
11:00 Gadabouts  
3:00 Bridge  
5:00 Dog Days of Summer Dinner begins  
6:00 Emmaus Prayer Group  
6:00 Refresh/Recharge  
6:15 Accountability Group  
6:15 PHASES Accountability Groups  
6:30 Dog Days of Summer Showtime begins  
7:15 Living Waters Rehearsal

### THURSDAY - June 4

8:00 Fitness Club  
9:00 Christ Centered Yoga  
2:00 Fibromyalgia Support Group  
6:30 Believers Band - Jazz Ensemble

### FRIDAY - June 5

8:00 Fitness Club  
9:00 Aerobics  
10:00 AOA Aerobics  
6:00 The Beacon Dance Night  
6:00 Carnet/Everett Rehearsal

### SATURDAY - June 6

5:00 Carnet/Everett Wedding

### SUNDAY - June 7

8:30 Lakeside Worship  
9:30 Living Waters Praise & Worship  
9:30 VBS Training  
9:45 At the Master's Feet Combined Class  
9:45 Sunday School  
10:55 Living Waters Praise & Worship  
10:55 Sanctuary Worship  
5:00 Disciple II  
5:00 The Harbor  
5:00 Personal Protection & Safety Class  
6:00 Youth Choir Homecoming Concert  
7:00 MSL (Methodist Sports League)



*Prayer Focus:*  
Confirmation  
Students



Sail away on the USS Storyteller with a good book this summer. Before the last suitcase is packed, check out the GFUMC Library for vacation reading fun!

The Library is open each Sunday from 9:45-11 a.m. and during the week, Monday-Thursday, from 9 a.m.-4 p.m.



A new pictorial church directory is in the works and will be published this fall. Stay tuned for more information.

We will be scheduling several dates this summer before students head off to college and some in September. Help us to put names with faces!

# Contact Us

If you have an emergency after office hours, on the weekend, or over a holiday, and need to speak with a pastor, please call the Church Office at 770.536.2341. The voice mail recording gives you the option to select an emergency contact. Press "5" and follow the instructions. Thank you.

## Pastoral Staff at Gainesville First United Methodist Church:

Name	Title	ext.	Email
Rev. David Burchett	Director of Student Ministry	115	dburchett@gfumc.com
Rev. Wendy Cordova	Pastor of Evangelism & Lay Ministry	135	wcordova@gfumc.com
Rev. Debby Fox	Pastor of Christian Education & Discipleship	149	dfox@gfumc.com
Rev. Tom Jones	Pastor of Congregational Care & Older Adults	119	tjones@gfumc.com
Dr. Terry Walton	Senior Pastor	109	twalton@gfumc.com
Dr. Steve Winter	Executive Pastor	141	swinter@gfumc.com

2780 Thompson Bridge Road, NE • Gainesville, Georgia 30506

Church Office Phone: 770.536.2341 • Fax: 770.534.7914

Website: www.gfumc.com • Preschool Phone: 770.534.0409

## CHRIST CENTERED YOGA

June & July Summer Session

9 to 10:30 a.m.

Tuesdays and Thursdays

Will not meet during VBS (June 15-19)

Preregister and save money! One day/week is \$40 per month or two days/week is \$60 per month. Email [becky@christcenteredyoga.org](mailto:becky@christcenteredyoga.org) to preregister! Drop-in classes are \$12/week. Loving childcare is provided free of charge.



2780 Thompson Bridge Road  
Gainesville, Georgia 30506

## CARE AND COUNSELING CENTER of Gainesville



You are not alone. Counseling can help and heal. Call 770.533.5702 for an appointment or for more information.

## DEVOTION & PRAYER LINE

Call 678-343-2733 to hear a brief devotional and prayer from one of the pastors of GFUMC. Prayer requests are forwarded to the pastoral staff.



## UNABLE TO ATTEND WORSHIP SERVICES?

Listen to the radio broadcast of the 10:55 a.m. Traditional Worship Service on AM 1240 WGA.

## LISTEN ONLINE!

Sermons are now available at [www.gfumc.com/sermons](http://www.gfumc.com/sermons).



First United Methodist Church  
Published Weekly  
Publication No. 934980  
Periodical Postage paid at  
Gainesville, Georgia

ADDRESS SERVICE REQUESTED