

The Messenger

MANCHESTER UNITED METHODIST CHURCH

February 10, 2006

VOLUME X



Kay Stiles
Director of Children's
Education

Do You Know Where Your Children Are?

“Of course! We are here at the church enjoying some conversation with friends in Fellowship Hall during M&Ms. We sent the kids out to the Narthex to run off some of that endless energy that they have. I’m sure they will be fine!”

“Well, sure, I know where my child is! He is out in the Narthex playing while I watch my daughter playing basketball in Fellowship Hall.”

“That’s a silly question! My daughter is right outside the door coloring until I am done with my meeting. But, I told her if she got bored she could go run around in Old Fellowship Hall.”

The above scenarios seem pretty harmless, and many times they are. BUT... What if your child runs into an 80-year old with a walker and knocks that elderly person down? What if your child runs full-tilt into the welcome desk or a wall corner sticking out? What if your child walks outside and a stranger is waiting?

YOU love your children; MUMC loves your children. We ALL want to keep them safe. If young children are attending an event here with you that does not include childcare, please keep them with you at all times. Letting them run unsupervised and out of your sight is an unsafe practice. Would you allow it at a restaurant? Or the mall? Or the park? Then, why would you allow it here?

Please help the MUMC staff make sure that this is always a safe place to be.

In Christ,
Kay

CONTENTS

Message from Carl

2

Ministry and
Fellowship

3-5

Stewardship Report

4

Living Our
Christianity

6

Worship
Our Church Family

7

MESSAGE FROM CARL

Dear Friends,

Before we know it I will be leaving for my renewal leave. The leave begins in early May as I lead a group from our church on a journey in the footsteps of Saint Paul. There is still room for more on that tour, and I hope you will prayerfully consider joining me.

The group tour will end on May 16 and I will stay in Greece when the group returns home. June will be spent in Italy. July and August will find me in England. In coming issues of *The Messenger* I will share more about my travel and study.

Why does the church support renewal leaves for clergy? Simply put, it is good for the clergy person so it is good for the church. Pastoral ministry is demanding and time consuming. For example, I have never regularly had "weekends" in my adult life. A weekend is something most people take for granted. But having two consecutive days off each week is something I have never experienced. During most of my thirty-five years in ministry, I have only had one day a week off rather than the two days most people take for granted. A renewal leave is a time to recharge personal batteries, to rest, and to regain balance and perspective on life.

A renewal leave is also a time to concentrate on study. A preacher is the only person in our culture that is expected to deliver a thoughtful and engaging speech to the same listeners week after week for years. Professors repeat classes each semester. Politicians have stump speeches that they repeat as they address different crowds. Motivational speakers recycle the same speech over and over again. Preachers face the same listeners every week for years, and are expected to have fresh material each week. A renewal leave gives opportunity to do extended study.

How is the leave funded? The Eli Lilly Foundation is fully funding my leave. The Lilly funds will compensate a person to fill my shoes on a full-time basis at the church. Lilly is also funding my travel and study. The church bears no financial cost for my leave.

In the coming weeks I will share more. I hope to see you in worship this week.

Grace and Peace,



Carl L. Schenck
Senior Pastor



Attendance Report Correction:

Due to a spreadsheet typographical error, year-end attendance was incorrect in the January 27, 2006 issue of "The Messenger." The correct average attendance for fiscal year 2005 was 1,560, a 1.73% increase over 2004.

Upcoming New Member Classes

March New Member Classes

Sunday, March 5

Lunch and orientation at 11:45 a.m.

Join Sunday, March 12

April New Member Classes

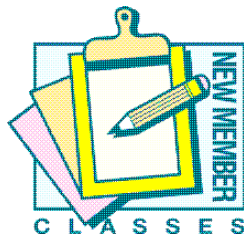
Sunday, April 2

Lunch and orientation at 11:45 a.m.

Join Sunday, April 30

Reservations required.

For more information or to make reservations, contact Betsy Vicente, Coordinator of New Member and Volunteer Ministries, **636-200-4720** or e-mail: betsy.vicente@manchesterumc.org



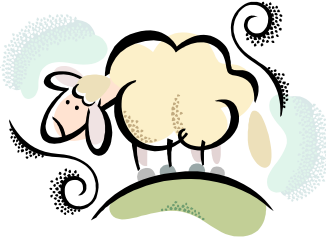
January New Members

Welcome to the January New Members who join us in prayer, service and fellowship at Manchester United Methodist Church.



Jay and Holly Butka, Emily, Laura and John
Bob Ederle
George and Jorja Hogg
Kandi Karger
Dennis and Conni Ochs
Alan and Bethany Riethmaier

We Like Sheep—A Community Outreach Opportunity



Invite your friends and neighbors to join you for the Music Maker's annual musical presentation!

**“We Like Sheep” by Kathie Hill
February 26
9 and 10:30 a.m. worship services and 3 p.m.**

This delightful musical is a retelling of the story of the Lost Sheep, reminding us of our Good Shepherd's constant and unconditional love for us. Please support and honor the ministry and work of these talented young people in MUMC's flock by attending their musical message and spreading the word to others who may enjoy hearing their Good News.

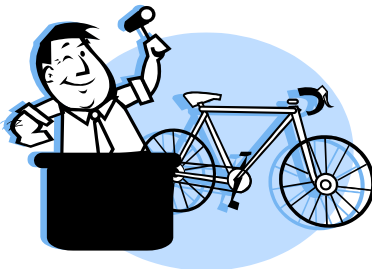
60 + Fellowship



60 + Fellowship Meeting will be **February 21 at 5:30 p.m.** in Fellowship Hall. This will be a Potluck Dinner. Please bring a dish to share, and drinks will be provided. There will be entertainment as well. Bring a friend to enjoy the evening.

Call David/Mary Jacobs at 636-458-1538 by Monday, February 20 with your reservation.

Youth Auction 2006



**Friday, April 28
6 p.m.
Marriott West**

Auction proceeds benefit youth mission and choir trips, Extreme VBS, van maintenance and youth room updates. Outreach to other youth in our community and in Mozambique provides them with summer camp experiences and sports equipment. The auction has allowed us to offer one deserving senior a \$2,000 scholarship for outstanding service and leadership.

Donations are easy; volunteering is too—just call Kathy Walker, 636-519-8681. Reservations are a cinch – just call Judi Shepard, 636-458-0087

MO-Hab Riders Bicycle Ministry



Are you new to bicycling? Are you looking for a group to explore the St. Louis area on bicycle? Have you been wanting to ride the Katy Trail End-to-End? Join the MO-Hab Riders on **Sunday, February 12, at 7 p.m.** in Room 223 for an information and planning meeting.

June 10 – 13, 2006 - MO-Hab Riders will ride the Katy Trail End-to-End to support MUMC's Habitat for Humanity project. We will begin in Clinton, MO on **Saturday, June 10** and conclude in St. Charles on **Tuesday, June 13**. Come see Missouri from a very unique perspective and support MUMC's Habitat for Humanity project. For more information, please **contact Ray and Joyce Smith, 636-256-7864, rayjoyce13@charter.net**

Contacting the Historical Ministry



If you would like to contact the Historical Ministry or share documents and information that you feel we would be interested in having, please do so at our new email address:

historical@manchesterumc.org

We would appreciate hearing from you.

Vacation Bible School Registration Coming Soon

Hey Parents—It's that time of year when Summer Programs start arriving in the mail! Please mark your calendars for Vacation Bible School. Children will become Treasure Seekers and find God in lots of known and unknown places. **Registration will be on Sundays, April 23 and April 30** for children who will be 4 by July 22, 2006 through those in the 5th grade. **Daytime dates for Vacation Bible School will be July 24-28. Evening dates will be July 23-27.**



New Announcement Locations Highlight Events

New announcement boards and display cases have been installed in several places around the church to help keep us informed of the daily schedule and upcoming events. This should eliminate taping on doors, walls, etc., for a more orderly look in our church home. **Ministry Leaders: Please give all flyers to Jan Doyle in the church office for posting.**

MINISTRY AND FELLOWSHIP

Our 2006 Stewardship Commitment to God

To begin, we owe a big “thank you” to the Stewardship Ministry Team. Their 12 months of dedicated work has clearly advanced MUMC's stewardship learning. Our stewardship journey has been guided by a very inspiring and creative collection of communication tools that included video, print and an interactive cross display that allowed us to post our thoughts and expressions of Christ’s love.



Greatest thanks go to those of you that responded with commitments of your prayers, presence, gifts and service.

Commitment Measures

For those interested in tangible measures of our stewardship learning, here are the total Commitments made as of January 29, 2006 (from approx. 3,800 possible):

- Stewardship through Prayers – nearly all respondents committed to regular prayer
- Stewardship through Presence – nearly all respondents committed to regular attendance at worship
- Stewardship through Gifts – 972 households committed
- Stewardship through Service – 1,316 committed

MUMC experienced a 35% return on Service commitments and a 51% return on gift commitments. The Stewardship Ministry Team will continue to work to share the Good News in a way that might inspire more persons to proclaim their faith through a regular discipline of stewardship.

How Our Commitments Will Support 2006 Ministries*

Ministry income of \$2,764,568 has been funded through:

- Commitments Received
- A Portion of Commitments Promised but not yet received as of January 31, 2006
- Fees, Rent and Miscellaneous Income (including an Eli Lilly Grant)
- 2005 surplus funds

While this is a record financial commitment, there is still more to do. MUMC’s expenses increase just as those in our own households. As a result, existing ministry programming is experiencing only moderate growth.

Ministry Growth Opportunities Yet to be Realized

Ministry opportunities yet to be realized due to limited funding include:

From Serving Ministry

- A Staff Missionary
- Move Vital Ministry Apportionment Funding to Operating Budget from Special Giving

From Sharing Ministry

- Website Enhancements
- Servant Evangelism
- Marketing for Special Events

From Seeking

- Publicity for Contemporary Worship
- Children’s Education Assistant
- Adult Education Materials

From Leadership

- Leadership Summit Support
- Adult Youth Leader Training

Growing Together in Christ

As Sr. Pastor Carl Schenck has frequently said, a healthy church will always dream of growth beyond its current financial resources and its existing ministry programming. There are great things ahead for Manchester UMC thanks to all who have worked to develop the opportunities for ministry that are in place and being implemented.

Thanks be to God,
Phil Estes, Church Business Administrator
Tim Vicente, Stewardship Team Leader

*If you would like a more detailed fiscal year 2006 income and expense report, please **contact Phil Estes, Business Administrator, 636-200-4706.**

Upcoming Singles Events



February 13—7:15 p.m.

Valentine's Potluck.

Ham sandwiches will be provided.

Bring a dish or \$5.

February 20—7:15 p.m.

"Activity Night" featuring volleyball,

board games, small group discussions, \$2 for members; \$3

non-members.

For more info, visit www.westcountysingles.com

A Year Round Fundraiser for MUMC!

'Shop without dropping' at your favorite stores. Online shopping mall pays 3-35% commission back to MUMC and you get great deals too! Share the website with friends, family, businesses. Go to www.bign.com/manchesterumc and click on 'Big N Marketplace.' There are many participating outlets, including: Best Buy, Dell, Office Depot, Old Navy, Sports Authority, Target, and many more. Questions? Call Lorraine Hackman at 636-256-8049.

New Recognition Program Proposed for Manchester United Methodist Men (MUMM)

Recognition of exemplary service is an important way for any organization to celebrate efforts that contribute to success. At MUMC, the UMM has recognized this and has sponsored the annual "Man of the Year" award since the mid 1960's. The award is given to recognize the contributions made by a man who exemplifies an outstanding commitment to Christ and his work in our church.

The Manchester United Methodist Men's group is considering a recommendation to expand its recognition program. As our church continues to grow in size and complexity, recognition of exemplary service becomes even more important; but, more complicated.

Under a proposed recommendation, the MUMM would no longer select one man to receive the "Man of the Year" award; but, rather, MUMM would institute multiple recognitions which would be based upon appropriate situations in any given year.

The UMM Executive Committee is seeking feedback prior to making a final decision to revise the "Man of the Year" Award. Please seek out a member of the MUMM Executive Committee or send a letter to MUMM through the church office by **March 10** to share your views about the proposed enhancement.

Support Program Reminder

GriefShare

Your Journey from Mourning to Joy

GriefShare is a special seminar/support group for people grieving the death of someone close. It is a faith-based program consisting of a short video session as well as group support time. The series is facilitated by people who have experienced the death of someone very close to them. It is a place where you can be surrounded by people who understand how you feel and the pain of your loss. At GriefShare, you will learn valuable information that will help you through this difficult time in your life.

DivorceCare

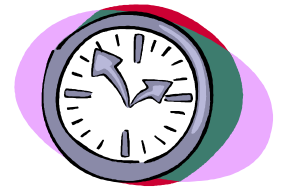
DivorceCare is a seminar/support group for people who have gone through divorce or are facing the possibility of divorce. It is a faith-based program consisting of a short video session as well as group support time. As part of this DivorceCare group, you will be guided by facilitators who have gone through their own divorce and have been able to put the pieces of their lives back together in a strong and positive way.

For more information on either of these support programs, **contact John Avery at 636-227-2643.**

30-Hour Famine

This year our Youth will once again be participating in the 30-Hour Famine (www.30hourfamine.org). On **February 24 and 25** youth will lock-in – fasting for 30 hours. They will also participate in service opportunities on Saturday and attend worship Saturday evening before breaking their fast. 30-Hour Famine

provides funds for World Vision (www.worldvision.org) to help eliminate world hunger. Just \$30 provides enough to care for a child for one year. Please help support our youth as they work to end world hunger. If you would like to sponsor a youth for the fast, **please contact Nancy Cooper at 636-200-4719.**



Matt Neely Concert

The Youth Department will be hosting a CD release concert for Matt Neely, songwriter, evangelist, and worship leader. His music is guitar-driven, alternative pop-folk-rock music about God. The concert is **Sunday, February 19 at 7 p.m.** All are invited to enjoy this concert. Tickets will be \$5 at the door. **To find out more about Matt and his music – check out www.mattneely.com**



Bringing the Joy of Music to Others by Ed Heins

Ed Brueggeman had his first concert experience last December as a member of the MUMC Chancel Choir during the “Gloria” concert. He said he was “excited to be a small part” of a group that could produce such inspiring music.

Ed said he has had a life-long interest in singing and “has been moved to tears” many times when listening to inspirational music during church services.

But, in 28 years of membership at MUMC, he never joined the choir. He credits his wife, Alice, for giving him the final nudge toward membership.

“Last summer, I was singing ‘Here I am Lord’ around the house. My wife said, ‘I’ve heard you talking for years about joining the choir. When are you going to do something about it?’” he said.

He finally joined last September.

He describes his singing as enthusiastic but certainly “not of solo quality.” That’s where Kevin McBeth’s skills in both music and organization came in, he added.

Ed said, “We really hit it the night of the ‘Gloria’ concert. Kevin McBeth has the way of bringing out the best in us. We were better than the sum of our parts.”

Although a newcomer, Ed said choir members “welcomed me with open arms.” He added, “I still can’t express the joy of the fellowship there. There’s a lot more happening with the choir than just the singing.”

“But,” he said, “all choir members work as hard as they can to make the music as good as it can be so it will touch other people.”

When he’s singing with the choir, he said he feels he’s a member of “a small-group ministry sowing seeds of Christianity.”

He said a church’s music is an integral part of the worship experience. In some cases, he said it can be the most important part.

Brueggeman said he’s been on mission trips to Mexico where he attended Spanish language church services. “I’ve enjoyed the worship through the music even when I didn’t know the language,” he said.

“I can be so moved by music. It can lift my spirits,” he added.

Brueggeman said his interest in singing dates back to his school days in Affton, Mo. He remembers, “I had Mrs. Stoddard for vocal music all through high school.”

“She was the one who instilled in me the idea that music could be a joy for both me and other people,” he said. “I never forgot that,” he added.

Although it took him years before he joined an organized choir, Brueggeman said he hopes his MUMC choir membership will allow him to give back in her memory some of that joy of music to others.

He knows his choir experience has been good for him. “It helps to equip me for other types of service,” he said.

If you’d like to explore options with the music program at MUMC, you can call Kevin McBeth at **636-200-4712** or the church office at **636-394-7506**.

February 11 and 12—Scout Sunday

Psalm 30
 2 Kings 5:1-14
 1 Corinthians 9:24-27
 Mark 1:40-45

Saturday, 5 p.m.
 Rev. Steve Harbaugh (chapel)

Sunday, 8 a.m.
 Rev. Steve Harbaugh (sanctuary)

Sunday, 9 and 10:30 a.m.
 Rev. Carl Schenck (sanctuary)

Contemporary Service
 Sunday, 9 a.m.
 Rev. Erik Corley (fellowship hall)

February 18 and 19

Psalm 41
 Isaiah 43:18-25
 2 Corinthians 1:18-22
 Mark 2:1-12

Saturday, 5 p.m.
 Rev. Debby Peebles (chapel)

Sunday, 8 a.m.
 Rev. Carl Schenck (sanctuary)

Sunday, 9 a.m.
 Rev. Debby Peebles (sanctuary)

Contemporary Service
 Sunday, 9 a.m.
 Rev. Carl Schenck (fellowship hall)

Sunday, 10:30 a.m.
 Rev. Carl Schenck (sanctuary)

February 25 and 26

Psalm 50:1-6
 2 Kings 2:1-12
 2 Corinthians 4:3-6
 Mark 9:2-9

Saturday, 5 p.m.
 Rev. Debby Peebles (chapel)

Sunday 8, 9 and 10:30 a.m.
 Rev. Carl Schenck (sanctuary)

Contemporary Service
 Sunday, 9 a.m.
 Rev. Erik Corley (fellowship hall)

We extend our Christian sympathy to:

Janice Benton, on the passing of her husband, Rollin Benton, on January 10.

Ruth Malvern, on the passing of her husband, **Don Malvern**, on January 19.

We celebrate these new arrivals:

Matthew and Emily Gifford on the birth of a daughter, Megan Elizabeth, on December 9, 2005. Brother is Maxwell. Proud grandparents are **Barbara and Dave Gifford**.

Patrick and Jody Gifford on the birth of a son, Jamison Robert, on January 19. Brother and sister are Paige and Jason. Proud grandparents are **Barbara and Dave Gifford**.

Correction:

Mary Sue Schlosser would like to extend thanks to everyone at MUMC for the outpouring of support given to her after the passing of her husband, **Alan Schlosser**, on January 2.

MUMC Members are in bold.

Chapel Prayer Ministry meets each Tuesday at 9:15 a.m. Request prayer support by filling out a Prayer Card in the church pew or by e-mailing prayer_requests@manchestrumc.org.



Manchester United Methodist Church
129 Woods Mill Road
Manchester, MO 63011-4339
Address service required

Non-Profit
Org.
U.S. Postage
PAID
Ballwin, MO
Permit No. 7

DATED MATERIAL

Meal-A-Month February Menu

Canned Chicken &
Dumplings
Green Beans
Cranberry Sauce
Muffin Mix

Especially Needed:

Shampoo
Toothpaste
Deodorant

The Messenger

Staff:

- Dr. Carl L. Schenck, *Senior Pastor*
- Rev. Debby Peebles, *Associate Pastor*
- Rev. Erik Corley, *Associate Pastor*
- Rev. Steve Harbaugh, *Minister of Adult Education*
- Dr. John Ward, *Pastor Emeritus (Retired)*
- Sherry Boland, *Handbell Program Director*
- Lori Borger, *Children's/Contemporary Choirs and Drama*
- Nancy Cooper, *Youth Director*
- Ted Cronbaugh, *Organist, Music Associate*
- Phil Estes, *Business Administrator*
- John Guiney, *Youth Director*
- Kevin McBeth, *Director of Music Ministries*
- Kimberly Smith, *Finance Director*
- Kay Stiles, *Children's Christian Education Director*
- Susan Vasquez, *Children's Christian Education Director*
- Betsy Vicente, *New Member and Volunteer Coordinator*



Publisher:

Manchester United
Methodist Church
129 Woods Mill Road
Manchester, MO 63011-4339
(636) 394-7506
(636) 527-1967 TTY

www.manchesterumc.org

The Messenger is published and distributed twice a month.

Publication schedule:

- Articles submitted by 9 a.m. on the 1st Friday will be published the 4th week of the same month.
- Articles submitted by 9 a.m. on the 3rd Friday will be published the 2nd week of the following month.
- The next submission deadline - February 17, 2006 for publication March 10, 2006

Please send articles, photos and suggestions to MUMC, in care of
The Messenger or burt.bollinger@manchesterumc.org.