

# The Messenger

MANCHESTER UNITED METHODIST CHURCH

February 24, 2006

VOLUME X

## Shazam, It's Lent Already!

*For everything there is a season, and a time for every matter under heaven:  
Ecclesiastes 3:1 NRSV*



Rev. Debby Peebles  
Pastor of Congregational Care

In less than a month the season of spring will come to the northern hemisphere. Crocus will begin to pop up. Then we will begin to see the rainbow of tulips and the daffodils. Then the trees, oh the trees. The magnolias are the first to break forth in beauty. Then the red buds. Can anything beat the solitary redbud in the midst of many other trees yet to bloom as we travel through the forested areas of this state? The dogwoods are next and then the Bradford pears follow. Another reminder of the season to come is the song of the birds returning from their winter place. The breeze, just enough for the kite to take flight, we hope, will begin to blow. Even after a very mild winter we will all be glad to see the signs of spring.

In the church we also have seasons. This next Sunday we will observe the last Sunday of Epiphany, and then we will begin the season of Lent, beginning with the observance of **Ash Wednesday**. Sometimes we might like to just come to church for the celebrations of the church year. We arrive on **Christmas Eve**, come back on **Easter** morning, and again maybe for **Mother's Day**. Before we know it, it is time to celebrate Christmas Eve again. But to truly celebrate Easter Sunday this year, let us covenant to begin at the beginning, and worship throughout the season of Lent. I invite you to come for dinner at 5:15 p.m. and then join us for worship on **Ash Wednesday, March 1** this year, in our sanctuary, at 6:45 p.m.

I invite you to attend the many other opportunities that we have at Manchester UMC, during this Lenten season, to grow in our knowledge and love of God in Jesus Christ through worship, study, prayer, and witness. Please plan on attending the following:

**Lenten Breakfasts** – Wednesdays, March 1 – April 12, 6 - 7 a.m.  
**Meals and Ministries (M & M's)** Wednesdays, March 1 – April 5  
Dinner – 5:15 – 6:30 p.m.  
Classes (March 8, 15, and 22) – 7 – 8 p.m.

Dying – No Choice; How We Die – Many Choices  
Body, Mind, and Soul  
Has It Been 2000 Years Already?

**Prayer and Meditation** – Thursdays, 5:30 p.m. – 7 p.m. in Sanctuary or Chapel (See sign on Welcome Center)

**Palm/Passion** – Saturday, April 8, 5 p.m. in Chapel and Sunday, April 9, at 8, 9, and 10:30 a.m. in Sanctuary and 9 a.m. in Fellowship Hall

**Maundy Thursday**, Thursday April 13, 7 p.m. in Sanctuary

**Good Friday**, Friday, April 14, Noon in Chapel and 7 p.m. in Sanctuary

**Easter Extravaganza**, Saturday, April 8, 9:30 – 11 a.m.

**Holy Saturday**, Saturday, April 15, 5 p.m. in Chapel

**Easter Day**, Sunday, April 16, Sunrise (7 a.m.) – outdoors, weather permitting, Fellowship Hall if needed; 8, 9, 10:30 a.m., and 11:45 a.m. in Sanctuary and 9 a.m. in Fellowship Hall (Communion following 8 a.m., 9 a.m., and 10:30 a.m. services in the Chapel)

Take time this year to **SEEK CHRIST** and then go into the community and the world as you **SHARE CHRIST AND SERVE CHRIST** with others.

Blessings to you in this season of Lent,

Debby Peebles  
Pastor of Congregational Care and **Wherever I Am Needed**

### CONTENTS

Message from Carl

2

Financial Statement

2

Ministry and  
Fellowship

3-5

Living Our  
Christianity

6

Worship  
Our Church Family

7

## MESSAGE FROM CARL

Dear Friends,

In the last issue of The Messenger, I shared some of the background of my upcoming renewal leave. I looked at the purpose, schedule, and funding of the leave. Now I will share some of the specifics of my activities.

The first two months of the leave will find me in Greece and Italy. The first century Roman Empire formed the seed bed from which early Christianity grew. When the Christian faith began to move outside of Judaism in the 30's and 40's A.D., it was the Greco-Roman culture that was the life experience of the first gentile Christians. Rome was their civil authority. The Roman and Greek gods were their religious heritage. In fact, by the time Christianity came on the Greco-Roman scene, the Roman emperors were claiming to be divine.



It was in this cultural/religious environment that Christianity became first a semi-underground movement, then a major religious force, and finally, the official religion of the empire. During my leave, I will be visiting major Greco-Roman first century sites, as well as doing some focused reading to seek to gain some understanding of just what it was that made the Christian faith so appealing. I will also be taking many pictures to bring back to enrich my preaching and Bible teaching. And all along, I will be writing my reflections and insights.

I hope that sounds like a valid way to use the first half of my renewal time. I expect to be intellectually and spiritually stimulated. I am sure I will have a lot of pictures to share. Hopefully there will also be insights that will be of value to myself and others.

These activities will take up the first two months of my leave. The last two months will have a very different flavor. I will write about them next time.

I hope to see you in worship this week.

A handwritten signature in cursive script that reads "Carl".

Carl L. Schenck  
Senior Pastor

---

### Our Financial Commitment to Christ

Kimberly Smith, Finance Director

#### Operating Commitments through January 31, 2006

Year-to-date giving and expense compares favorably to the January 2005 surplus of \$89,346. January 2006 results:

Commitments Received	\$326,880
Expense	\$163,541
<b>Surplus (Deficit)</b>	<b>\$163,339</b>

### Building Fund Commitments through January 31, 2006

MUMC has collected 11.7 percent of the total 2006 Building Fund Commitment.

Current Commitment Total	\$371,779
Total Collected	\$43,489
<b>Remaining Balance</b>	<b>\$328,290</b>

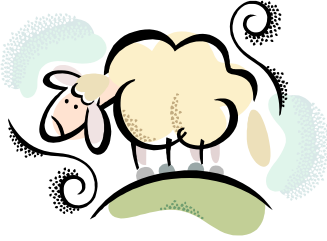
### Attendance

Average weekly attendance through January was 1,450, a 0.89 percent decrease over the same period in 2005.



**We Like Sheep—A Community Outreach Opportunity**

Invite your friends and neighbors to join you for the Music Makers' annual musical presentation!



**“We Like Sheep” by Kathie Hill**  
**February 26**  
**9 and 10:30 a.m. worship services and 3 p.m.**

This delightful musical is a retelling of the story of the Lost Sheep, reminding us of our Good Shepherd's constant and unconditional love for us. Please support and honor the ministry and work of these talented young people in MUMC's flock by attending their musical message and spreading the word to others who may enjoy hearing their Good News.

**Ash Wednesday**

*"You are dust, and to dust you shall return."*



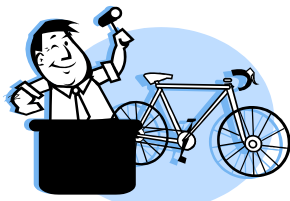
**Wednesday, March 1** is Ash Wednesday. It marks the first day of Lent, and is a day when Christians confront their own sin and mortality. **We will have an Ash Wednesday worship service at 6:45 p.m.**, where we will receive a mark of ashes on our heads as a reminder of our need for God's mercy. Please make plans to join us for this solemn but important time of reflection.

**Youth Auction 2006 and Scholarship Details**

**Friday, April 28, 6 p.m.**

**Marriott West**

Auction proceeds benefit youth mission and choir trips, Extreme VBS, van maintenance and youth room updates. Outreach to other youth in our community and in Mozambique provides them with summer camp experiences and sports equipment. The auction has allowed us to offer one deserving senior a \$2,000 scholarship for outstanding service and leadership.

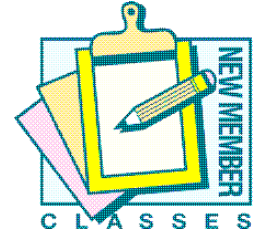


**Donations are easy; volunteering is too—just call Kathy Walker, 636-519-8681.**

**Reservations are a cinch – just call Judi Shepard, 636-458-0087.**

The youth scholarship itself is awarded on the basis of participation and leadership in youth activities. **The scholarship deadline is April 9.** Scholarship applications can be obtained at the welcome desk outside the youth room or by speaking with MUMC's youth directors.

**Upcoming New Member Classes**



**March New Member Classes**

**Sunday, March 5**  
 Lunch and orientation at 11:45 a.m.  
**Join Sunday, March 12**

**April New Member Classes**

**Sunday, April 2**  
 Lunch and orientation at 11:45 a.m.  
**Join Sunday, April 30**

Reservations required. For more information or to make reservations, contact Betsy Vicente, Coordinator of New Member and Volunteer Ministries, **636-200-4720** or **e-mail: [betsy.vicente@manchesterumc.org](mailto:betsy.vicente@manchesterumc.org)**

**Vacation Bible School Registration Coming Soon**



Hey Parents—It's that time of year when Summer Programs start arriving in the mail! Please mark your calendars for Vacation Bible School. Children will become Treasure Seekers and find God in lots of known and unknown places. **Registration will be on Sundays, April 23 and April 30** for children who will be 4 by July 22, 2006 through those in the 5th grade.

**Daytime dates will be July 24-28.**

**Evening dates will be July 23-27.**

**New Announcement Locations Highlight Events**

New announcement boards and display cases have been installed in several places around the church to help keep us informed of the daily schedule and upcoming events. This should eliminate taping on doors, walls, etc., for a more orderly look in our church home.



**Ministry Leaders: Please give all flyers to Jan Doyle in the church office for posting.**

## 60 + Sharing Christ & Fellowship

Corned Beef Dinner

Tuesday, March 21 in Fellowship Hall  
at 5:30 p.m.

Cost: \$6.50 per person--**Due by March 18** with your reservation. Check payable to MUMC. Send to:

Ken Guier  
6 Helmsdale Ct.,  
Ballwin, MO 63011  
636-394-1895

We'll also play Bingo after dinner. Please make plans to join us in fellowship, and bring a friend. Just be sure to make reservations.



## A Valentine's Thanks from the United Methodist Women



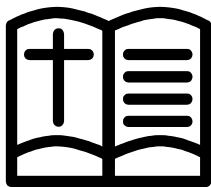
On January 15, 2006 the UMW met in Fellowship Hall after worship for lunch, our annual pledge service and to prepare care packages for our military men and women for Valentine's Day.

Nearly 100 women and men turned out for this event and it was a huge success. The result was that **108 boxes** were filled with personal items and sent to our troops abroad.

Many thanks to all who helped and contributed so generously to this UMW event.

## Introducing 'God 101'

Do you wonder if Joan of Arc was Noah's wife? Do you have trouble remembering if it's "Father, Son and Holy Spirit," or the "Father, Son and Holy Toledo?" If this is you, join us at Contemporary Worship for "GOD 101: A Basic Introduction to the Christian Faith," **Sundays at 9 a.m. starting March 5.**



## Coffee With Metro Ministry

Metro Ministry Teams invite you to an informational coffee. Mark your calendar now to join us on **Sunday, March 12 from 11:30 a.m. -12:30 p.m.** in Fellowship Hall. This will be a wonderful opportunity to meet the new Metro Homeless Center and Family Services Director, learn more about our ministry teams and to learn of new and exciting ways to serve in the coming months.



If you have any questions, call Amy Buehler at 636-386-1545.

## A Year Round Fundraiser for MUMC!

'Shop without dropping' at your favorite stores. Online shopping mall pays up to 35% commission back to MUMC, and you get great deals too! Share the website with friends, family, businesses. Go to [www.bign.com/manchesterumc](http://www.bign.com/manchesterumc) and click on 'Big N Marketplace.' There are many participating outlets, including: Best Buy, Dell, Office Depot, Old Navy, Sports Authority, Target, and many more. Questions? Call Lorraine Hackman at 636-256-8049.

## Manchester Methodists On The Move



Godspeed to our members who have moved away! We do not always hear about all the people in our fellowship who have moved away from St. Louis, but recently have received information on the members listed below.

Sometimes in the daily rush of packing, house-hunting and moving, the word that they will soon be leaving somehow doesn't reach the church office. So, when you know of a family moving away, please notify the office.

We would like to say goodbye and join together in blessing these members on behalf of their entire church. For their time with us we give thanks to God and ask that He prepare a new place for them and make them welcome in a new fellowship. As they have been known and loved in our church, may they soon be known and loved in another.

To them we say: "Go with God. May you always rest in the assurance that God will lead you, will be with you, and will not fail you or desert you. Have no fear. Do not be disheartened by anything." Amen.

**Brinkley, Mary Ann; New London, MO**  
**Kramer, Julie; New York, NY**  
**Norris, Ed, Beth, J.D. and Will; Moorpark, CA**  
**Reece, Richard, Sonya, Emily, Eric and Ellen; Atlanta, GA**

## Upcoming Singles Events

February 27—7:15 p.m.  
Movie Night



For additional information and updates, visit [www.westcountysingles.com](http://www.westcountysingles.com)

## New Recognition Program Proposed for Manchester United Methodist Men (MUMM)

Recognition of exemplary service is an important way for any organization to celebrate efforts that contribute to success. At MUMC, the UMM has recognized this and has sponsored the annual “Man of the Year” award since the mid 1960’s. The award is given to recognize the contributions made by a man who exemplifies an outstanding commitment to Christ and his work in our church.

The Manchester United Methodist Men’s group is considering a recommendation to expand its recognition program. As our church continues to grow in size and complexity, recognition of exemplary service becomes even more important; but, more complicated.

Under a proposed recommendation, the MUMM would no longer select one man to receive the “Man of the Year” award; but, rather, MUMM would institute multiple recognitions which would be based upon appropriate situations in any given year.

The MUMM Executive Committee is seeking feedback prior to making a final decision to revise the “Man of the Year” Award. Please seek out a member of the MUMM Executive Committee or send a letter to MUMM through the church office by **March 10** to share your views about the proposed enhancement.

## Senior High Confirmation Celebration

Please join us in worship on **Sunday, March 12 at 10:30 a.m.** as the Senior High youth who have completed Senior High Confirmation stand and reaffirm their vows. This has been a time of discovery in their lives, and these youth are taking on a new level of commitment to their faith and their church. Please support them with your prayers and your presence.

## Support Program Reminder

### GriefShare

#### Your Journey from Mourning to Joy

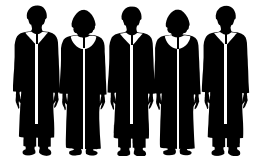
GriefShare is a special seminar/support group for people grieving the death of someone close. It is a faith-based program consisting of a short video session as well as group support time. The series is facilitated by people who have experienced the death of someone very close to them. It is a place where you can be surrounded by people who understand how you feel and the pain of your loss. At GriefShare, you will learn valuable information that will help you through this difficult time in your life.

### DivorceCare

DivorceCare is a seminar/support group for people who have gone through divorce or are facing the possibility of divorce. It is a faith-based program consisting of a short video session as well as group support time. As part of this DivorceCare group, you will be guided by facilitators who have gone through their own divorce and have been able to put the pieces of their lives back together in a strong and positive way.

For more information on either of these support programs, **contact John Avery at 636-227-2643.**

## Attention Mrs. Betty Gnaegy’s Junior and Senior High Choir Alumni!



If you were ever a Junior or Senior High Choir member under the direction of Mrs. Betty Gnaegy, then we need you to contact us! A committee is being formed to plan a choir reunion event the weekend of **September 30 and October 1, 2006** during the 150<sup>th</sup> Chapel Birthday Celebration. If you are a church member that knows an alumni person that may not currently attend MUMC, or if you are the parent of an alumni member that has moved away, please let them know about this great opportunity to reconnect with their old choir friends. If you are interested in participating in the reunion or helping plan this exciting event, **please contact Susan (Jacobs) Stone at [StoSus4@aol.com](mailto:StoSus4@aol.com), or by telephone: 636-861-1515 (evenings and weekends only please).**

## Christmas Tree Lot Nets \$40,000

by Ed Heins

The 250 volunteers who staffed MUMC's 2005 Christmas tree lot got good news: every one of the 1,725 trees were sold, and those sales netted over \$40,000 for the church's charitable projects.

Also, the total sellout reversed a trend of declining sales in recent years. The sales were over 15 percent higher than 2005, according to MUMC member Larry House who manages the tree lot program.

House already has agreed to run the 2006 tree program, his 5<sup>th</sup> year in that position. He's worked at the lot for about 15 years, he said.

About his commitment, House said, "I enjoy it, and feel that I'm donating my time to a good cause. This is just another part of church fellowship." Concerning the long hours, he said, "It's work, but it's always fun work."

Beneficiaries of the strong sales will be a range of scholarship and mission projects. The \$40,000 net proceeds represent a \$7,000 increase from the proceeds the previous year.

A final donation list, with amounts, will be determined by the MUMC Men's Club board, House said.

Among the recipients of tree lot money will be seminary students in Missouri, missions in Mexico, and support of VIM trips by church members to Mexico. Some proceeds also are set aside for future van purchases and emergency church repairs, House said.

The 2005 Christmas tree lot represented the 42<sup>nd</sup> year of continuous sales. House estimates the tree sales have netted about \$850,000 during that time for various church projects and programs.

Last year, the MUMC lot opened the Friday after Thanksgiving. The lot was staffed seven days a week from 9 a.m. to 9 p.m. The last tree was sold on Christmas Eve.

Among the sales trends was one toward taller trees. House said the increase in number of people with homes with vaulted ceilings was responsible.

House has already translated those trends into his 2006 purchase order, which will be submitted at the beginning of April. He plans to buy 1,725 trees again, but with a higher percentage of taller trees.

House said he didn't have an explanation for the increase of 2005 sales over the previous year, when sales were less than 1,500 trees. The decline in tree sales in recent years had been blamed on the increase in use of artificial trees, which can be reused year after year.

He said, "I do give some credit to (Pastor) Carl for his salesmanship from the pulpit." He was referring to the senior pastor's tongue-in-cheek mentions of dire consequences if an MUMC member was found to have patronized a competing tree lot.

But, House said quality of trees and lot service by volunteers also figured in. "Many of our sales are to repeat customers," he said. The MUMC trees even come with a "care kit" that includes a big plastic bag to cut down on needle litter during disposal.

He said customers come from as far away as Sullivan, Mo. "These are people who moved away from the area but come back because they know we have good trees."

One volunteer mentioned a customer who had first come to the lot as a youngster with his father. Now, he brings his son with him to buy their trees.

**February 25 and 26**

Psalm 50:1-6  
 2 Kings 2:1-12  
 2 Corinthians 4:3-6  
 Mark 9:2-9

Saturday, 5 p.m.  
 Rev. Debby Peebles (chapel)

Sunday 8, 9 and 10:30 a.m.  
 Rev. Carl Schenck (sanctuary)

Contemporary Service  
 Sunday, 9 a.m.  
 Rev. Erik Corley (fellowship hall)

**March 4 and 5 (Communion)**

Psalm 25:1-10  
 Genesis 9:8-17  
 1 Peter 3:18-22  
 Mark 1:9-15

Saturday, 5 p.m.  
 Rev. Debby Peebles (chapel)

Sunday 8, 9 and 10:30 a.m.  
 Rev. Carl Schenck (sanctuary)

Contemporary Service  
 Sunday, 9 a.m.  
 Rev. Erik Corley (fellowship hall)

**March 11 and 12**

Psalm 22:23-31  
 Genesis 17:1-7, 15-16  
 Romans 4:13-25  
 Mark 8:31-38

Saturday, 5 p.m.  
 Rev. Debby Peebles (chapel)

Sunday 8, 9 and 10:30 a.m.  
 Rev. Carl Schenck (sanctuary)

Contemporary Service  
 Sunday, 9 a.m.  
 Rev. Erik Corley (fellowship hall)

**We extend our Christian sympathy to:**

**Gail and Chuck Joyner**, on the passing of Gail's mother, Muriel Dickinson Chase, on January 24. She is also survived by grandchildren Kim and Jim Joyner.

The family of **Paul E. Spoeneman, DDS**, who passed away on February 5.

**John and Lois Himpel**, on the passing of John's father, Billy Himpel, on February 7. Billy is also survived by grandchildren, Roman, **Sergei**, and Vika.

**Gerry Asbury**, on the passing of her brother, Gary Saathoff, who passed on February 13.

**We celebrate these new arrivals:**

**Jim and Robyn Barrett**, on the birth of a son, Michael Kenneth, on October 17. Brothers are Jimmy and Joseph.

**Matt and Sara Call**, on the birth of a son, Jackson Matthew, on December 31.

Robert and Mary Novak, on the adoption of a son, Christopher James, in January. Sisters are Emily and Katie. Proud grandparents are **Darwin and Carol Novak**.

Mike and Beth Harper, on the birth of a son, Maxwell Michael, on January 7. Proud grandparents are **Patty Hunter and Jerry Fritz**.

Kristin and Jeff Peters, on the birth of a son, Evan Jeffrey, on January 27. Big sister is Ashley. Proud grandparents are **Charles and Carol Schaffer**.

Scott and Suzanne Bartlett, on the birth of a son, Alexander Scott, on January 28. Big sister is Gabriella. Proud grandparents are **Doug and Carolyn Bartlett**.

Sheila and Greg Adams, on the birth of a daughter, Kathryn Therese, on February 9. Proud grandparents are **Jack and Mary Lou Adams**.

**MUMC Members are in bold.**

Chapel Prayer Ministry meets each Tuesday at 9:15 a.m. Request prayer support by filling out a Prayer Card in the church pew or by e-mailing [prayer.requests@manchesterumc.org](mailto:prayer.requests@manchesterumc.org).



Manchester United Methodist Church  
 129 Woods Mill Road  
 Manchester, MO 63011-4339  
 Address service required

Non-Profit  
 Org.  
 U.S. Postage  
 PAID  
 Ballwin, MO  
 Permit No. 7

**DATED MATERIAL**

**Meal-A-Month  
 March Menu**  
 Beef Ravioli  
 Corn  
 Boxed Cookie Mix  
 Fruit Cocktail  
 Kleenex

**Especially Needed:**  
 Deodorant  
 Toothpaste

**The Messenger**

**Staff:**

- Dr. Carl L. Schenck, *Senior Pastor*
- Rev. Debby Peebles, *Associate Pastor*
- Rev. Erik Corley, *Associate Pastor*
- Rev. Steve Harbaugh, *Minister of Adult Education*
- Dr. John Ward, *Pastor Emeritus (Retired)*
- Sherry Boland, *Handbell Program Director*
- Lori Borger, *Children's/Contemporary Choirs and Drama*
- Nancy Cooper, *Youth Director*
- Ted Cronbaugh, *Organist, Music Associate*
- Phil Estes, *Business Administrator*
- John Guiney, *Youth Director*
- Kevin McBeth, *Director of Music Ministries*
- Kimberly Smith, *Finance Director*
- Kay Stiles, *Children's Christian Education Director*
- Susan Vasquez, *Children's Christian Education Director*
- Betsy Vicente, *New Member and Volunteer Coordinator*



**Publisher:**

**Manchester United  
 Methodist Church**  
 129 Woods Mill Road  
 Manchester, MO 63011-4339  
 (636) 394-7506  
 (636) 527-1967 TTY

[www.manchesterumc.org](http://www.manchesterumc.org)

*The Messenger* is published and distributed twice a month.

**Publication schedule:**

- Articles submitted by 9 a.m. on the 1<sup>st</sup> Friday will be published the 4<sup>th</sup> week of the same month.
- Articles submitted by 9 a.m. on the 3<sup>rd</sup> Friday will be published the 2<sup>nd</sup> week of the following month.
- The next submission deadline - March 3, 2006 for publication March 24, 2006

Please send articles, photos and suggestions to MUMC, in care of *The Messenger* or [burt.bollinger@manchesterumc.org](mailto:burt.bollinger@manchesterumc.org).