

St. Paul Lutheran Messenger



Volume 2020 Issue 10

October 2020

Our Mission Statement:

“To Grow in God’s Word and Share
God’s Love”

Our Core Values:

1. Building community inside and outside of our church building.
2. Nurturing and developing faith lives for all ages
3. Serving Others (in our neighborhoods, community, state and beyond)
4. Caring for our members and church building.
5. Investing in children, youth and their families.

In this Issue:

Pg. 2 Pastor’s Pen

Pg. 3 Presidents Corner

Pg. 4 Daniel’s Den

Pg. 5 Health Minute

Pg. 6 From the Office

Pg. 7 Upcoming Events,

Updates & Forms

Church Calendar

For I know the plans I have for you,” declares the LORD, “plans to prosper you and not to harm you, plans to give you hope and a future. Then you will call on me and come and pray to me, and I will listen to you. You will seek me and find me when you seek me with all your heart. *Jeremiah 29:11-13*

I have always found comfort and strength from Jeremiah 29. Friends of ours read it to Heather and I after Alex was diagnosed with autism. It was a time of confusion, grief and fear as we walked into an uncertain future. But, Jeremiah reminded us that God is God, and that God could be experienced through prayer, and with God there is always a future that is filled with hope – even if it is hard to perceive in the moment.

It was not easy to turn in my resignation, and whatever feelings you have about it are justified, because they are your feelings and you are entitled to them. Over time I came to the conclusion that I was not able to effectively serve out my call and felt it was something I needed to do for my own well-being and that of my family.

Even though my tenure was short I will be forever grateful for the wonderful and gifted people I have come to know and journey with at St. Paul Lutheran. I am also honored to have had the privilege of working with such an amazing and talented staff. I would often tell them that they are the best staff I have ever worked with. As I will miss you dearly, I will miss them. Please reach out to them to thank them for their service and surround them with your love. I believe you already know how fortunate you are to have them.

As I go forward, I choose to take with me wonderful memories of my time with you.

I remember how compassionate, articulate and courageous Alida Peltier was when she gave a speech at the luncheon for YCDC or all of the people that turned out for Lumberjack Days and the Ice cream social.

I remember that anxious face of adults and youth as they headed out on mission trips to South Dakota and Guatemala, and how their faces glowed with the love of God and excitement when they returned. I remember how everyone pulled together for VBS and getting a pie in the face – It still feels like I have cool whip in my nose.

I remember being in awe the night we celebrated “Come to our Table,” and was reminded again that with Christ all things are possible. I remember bible studies in person and on line, and I remember how much fun it was to teach confirmation and go on field trips with the older youth organization that were serving people on the margins. I remember the Urban Immersion and how the girls screamed when they came across Lululemon pants while sorting clothes at the Value Village.

And I remember how people came together after COVID to call and care for our older and shut-in members; especially, stories that were told after receiving monthly gift baskets.

To me memories are a gift from God, because they give me hope, and I hope that will be true for you.

This is a sacred time for you, so as Jeremiah says, seek the Lord with your whole heart and he will be found by you, and you will see that you, too, have a future filled with hope.

*Blessings in Christ –
Pastor Fred*

Presidents Corner

*“Once you choose hope, anything’s possible.”
-Christopher Reeves*

~~~~~  
When the year started out Pastor Fred and I both had hoped to find what is needed to help the congregation and church pull together and to be one in Christ.

My hope for Pastor Fred and his family is that they find peace on their new journey, although I was hoping that Fred and his family would retire here. He is a good person to work with, talk about Christ with and is a good friend to have. We will all miss his stories and his sense of humor.

I hope with the help from the Bishop and the Synod that we can all get it together; to make this a happy church once again. I know with the help and support from each other we can make it happen.

My hope coming into this holiday season is that we will start to mend and begin to become a church that is one body in Christ. There is hope out there. We just need to work on it together with Christ at the center.

The biggest hope of all is to get through COVID so we can all worship and pray in Gods house together.

I hope this finds everyone well and safe.

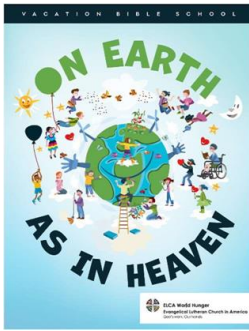
*In Christ’s name,  
Jeff Thomsen*

Heartfelt   
**THANKS**  
**TO OUR VOLUNTEERS!**

**Dan's Den**



**Follow us on Instagram!**  
[Spic\\_stillwater](https://www.instagram.com/Spic_stillwater)



## **Sunday School is a Go!**

WE ARE HAVING SUNDAY SCHOOL! It will be completely at home using a similar model as our VBS was this summer. Sunday school will go up to Thanksgiving for the Fall following the same schedule as Connect. If you didn't have a chance to sign up, please let me know!  
week!

## **Youth Ministry**

Connect will officially Start September 30<sup>th</sup> at 6:00 PM. We will be following the same schedule as Sunday School. We are meeting Wednesday's at 6:00 PM outside on the lawn. During this time, we take a pause from the world around us to check in on one another, have a couple laughs, and have a short devotion/Bible Study. We will continue meeting outside until weather does not permit. Once it becomes too cold, we will have a conversation with youth and parents about meeting throughout the winter. Bring a lawn chair if you want one!

## October Health Minute



Most insurances, Medicare and Medicaid should offer the vaccine at no or very low cost.

*“Fear not, for I am with you; be not dismayed, for I am your God; I will strengthen you, I will help you, I will uphold you with my righteous right hand.”* Isaiah 41:10

Nurse,  
Linda Peterson

### **Health Experts Urge Importance of FLU VACCINES This Year**



Getting a flu vaccination this year is more important than ever. According to the CDC, COVID-19 will continue into the fall and winter and may overlap with the flu season. With the possibility of both viruses occurring in our communities at the same time, it is vital that everyone age 6 months or older get their yearly flu shot. Preventing and reducing levels of influenza in our community will reduce symptoms that might be confused with those of COVID-19.

Flu season generally peaks in December and January and it is important to be vaccinated before the flu begins to spread. Since it takes about two weeks for the flu vaccination to provide protection, the CDC recommends getting your flu shot before the end of October.

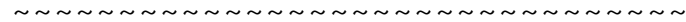
Flu vaccine is available now at many private health care providers and clinics, free clinics and pharmacies, In the Stillwater area, in addition to the clinics, vaccines should be available in pharmacies within the larger stores; including CUB, Target, Walgreens, WalMart. New in recent years, most dental offices will offer flu vaccines.



**From The Office**

*“God is omnipotent, He is omniscient, and He is ever present.”*

*-Little Richard*



A reminder that come May of 2021 any mail that comes to the church and doesn't have our PO Box number on it will not be forwarded any longer. Please make sure that whenever you are mailing something to the church office you are using our PO Box. The address is below:

**St Paul Lutheran Church  
PO Box 268  
Stillwater, MN 55082**

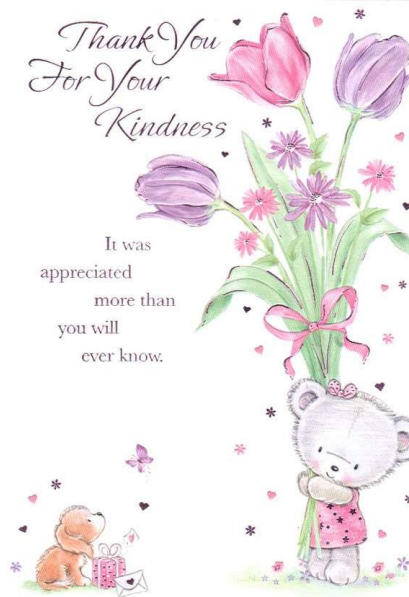
I received some feedback from some members regarding the TV station and some issues with the programming a few weeks ago. I spoke with the TV station and received some feedback on what happened. The gentleman who handles our video files went into quarantine because of being exposed to the COVID virus and the person that they used to replace him got our video files mixed up with another church. I have been assured that the issue has been taken care of and we shouldn't have this happen again. Thanks to Jennifer Braun and Bob Michaelis for bringing this to our attention. ☺

We have established some guidelines during COVID regarding when the counters will be coming to church to count the safe. They will be counting on the second and last Monday of each month. Please plan accordingly if you prefer dropping your envelopes off in person. Thanks to Jenny Powell and Vida MacDonald for volunteering their time to help with this.

The order form to order holiday Wreaths/Swags is included in this newsletter.



A very special thank you for the cards and prayers for Chuck. We are very touched by everyone's kindness.



**Prayer Box**



**Members:** Meghan Haefs, Margy Carlsen, Diane Siverhus, Ruth Guse, Mary & Larry Viers, Ken Kress, Barb Raleigh, June Carlson, Greg Nelson, Joyce Warner, Martin Withuski, Lorna Lutz, Jane Johnson, Dave Carlsen, Deb Hanson, Dorie Nelson; Audrey Radke, Ted Anderson, Connie Borson, Mike Immel, Karen Celski, Shelley Racine, the family of Chuck Brower, the family of Art Ruetcher

**Family and Friends:** Ian and Jeff Lundstrom, Lila Powell, Stephanie Rossell, Chloe Hoyle, Becca Larson, Dave Hendrickson, Mary Jean Just, Alice Ault, Anne Emily, Easton Cummings, Tom Schwietz, Debbie Odell, Josephine Wiersma, Beverly Halberg, Patricia Peterson, Marcella Christensen, Brian Utecht, Molly Granat, Robert Heaney, Bill Kaufmann, Perry Dau, Bonnie Lundstrom, Bill and Bonnie Sherrat, Zoe Peterson, Claire Olson, Lindsay Lang, the family of Norma Koenig, Abby Orton, Kathy Nazworth, Jan Brownlee

**Military Personnel:** Kenny Helms, Daniel Kaufmann, Jill Meyer, Haydon Dvorak

## Upcoming Events, Updates & News

### Mgama Scholarship Deadlines

Just a reminder of the deadlines for providing support to the Mgama Scholarships for the 2021 school year. They are as follows:

\*October 5<sup>th</sup>: to indicate your support (this is an extension from October 1<sup>st</sup>).

\*October 25<sup>th</sup>: Payment is due. Please include the form (included at the end of the newsletter) with your payment.

Thank you from the Social Concerns Committee

### MISSISSIPPI HABITAT MISSION TRIP UPDATE:

It has been decided that our annual mission trip to Clarksdale, Mississippi to build homes in 2020 be cancelled. Due to Covid-19, it has been decided that travel, staying in motels, staying with a group in the dorm and working side by side with the people of Clarksdale on a home is just too risky at this time. We do not want to put our mission team members or the families in Clarksdale at a higher risk of contracting COVID. There is still a great need for homes in the Clarksdale area, but it is a mutual agreement with the leaders in Clarksdale that the decision to not come is the best decision for all at this time. Plans are in place for a mission trip in the fall 2021 – if it is safe to do so. If you think you might be interested in joining the mission team next fall and want to be kept in the loop with upcoming information, let Carol Weber know at any time – this would not be a commitment to go, just a way to keep in touch and know what is being planned. There are a few of us, if circumstances change and it is safe to do so, that may make a trip in the spring. Anyone interested in possibly going in the spring, please let Carol know, also. We – the mission trip team and the people of Clarksdale – appreciate your continued support in these uncertain times through your prayers and donations..

The Bloodmobile blood draw took place on Friday, September 11. They had 108 donors collecting 116 units of blood. They went over their projected goal and were very pleased with how things ran. Thank you nurse Linda for assisting with this event. Pastor Fred and the music team met with Patrick Raleigh, Worship Chair, regarding members attending worship on Wednesday nights and a tentative 1 Sunday a month. The Worship Team and SMART Team will meet to review the policy and procedures. Due to illness, this group has not met yet.

Both Trinity and Our Saviors do not have indoor worship at this time.

Remember to wear your mask, distance yourself from others and wash your hands and you will be protected.

*Nancy Schlagel*  
SMART Team Chairperson

### Operation Christmas Child – 2020

St. Paul Lutheran has been a large supporter of Operation Christmas Child for over 20 years. With our global pandemic affecting the world, as well as war-torn countries, and catastrophic weather-related events; we know this year's Operation Christmas Child Shoeboxes will be especially needed.

Over the past year, Samaritan's Purse, through Operation Christmas Child, resulted in more than 2 million children making decisions for Christ and over 1,000 churches being started. Samaritan's Purse is working at living out scripture from Mark 16:15 "proclaim the Gospel to the whole creation".

What can SPLC do in this year of COVID-19 to be part of Operation Christmas Child? You can fill a shoebox (please see the "How to Pack A Shoebox", attached with this newsletter). You can also find the "How to Pack" form at the church office and our website under the "News" tab.

You can purchase items to be part of filling a shoebox.

## **Upcoming Events, Updates & News (con.)**

How can I get shoeboxes or items to the church? You are able to drop-off during office hours **OR** we are going to offer “Curbside drop-off at church” on two separate dates:

- Saturday, November 7<sup>th</sup> from 9 am – 11 a.m.
- Sunday, November 15<sup>th</sup> from 10 am. – Noon

If you have any questions, please email Mugs at [Mugs1952@gmail.com](mailto:Mugs1952@gmail.com) or call at 651.276.1065.

### **Social Concerns Outreach Update Links:**

Valley Outreach

[www.valleyoutreachmn.org](http://www.valleyoutreachmn.org)

Hope for the Journey Home

[www.guardian-angels.org](http://www.guardian-angels.org)

Simpson House

[www.simpsonhousing.org](http://www.simpsonhousing.org)



## 2020 WREATH/SWAG SALE FUND-RAISER

What a year! It just doesn't seem possible that we need to start thinking about Christmas wreaths, swags, garland, etc. yet, but, the holiday decorating season will be here before we know it! The wreath and swag sale is going to happen again this year. However, because of the Covid-19 requirements of social distancing, masks, the church building being closed, etc. we will be doing things a little different this year. The order forms will be available in the church newsletter and on the church website (under the News tab), where you can print them, fill it out and mail it to Carol Weber at 613 Willard Street W, Stillwater 55082, or you can look at the order form, decide what you want and place your order by phone by calling Carol at 651-439-0689 (if not available, please leave a message with your name, phone number, and what you wish to order). Order deadline is **November 11th**. We will be using the same vendor as we have for the past 31 years, so the product freshness and quality will be the same as you have come to appreciate. We encourage you to share the order forms or ordering information with friends, neighbors and relatives – non-member orders are always welcome! The proceeds from the wreath/swag sale will be used toward our donation for building supplies for our anticipated 2021 Mississippi Habitat trip.

The items listed on the order form below are: 24" wreaths; door swags; and the 36" cross on a cemetery usable stand. All are beautifully decorated with a red bow and other decorations (the cross only has a red bow). There are other sizes of wreaths available if you need smaller or larger one (20 inch is the smallest and they go up in size to a 60 inch wreath. Ropes of garland are also available. If you want to know more about the prices of these special order items, please talk with Carol Weber.

**Your order will be available for you to pick up starting on the Monday before Thanksgiving, November 23rd**, so if you like to decorate Thanksgiving weekend or put items out in the cemetery prior to Thanksgiving, you will be able to do that. The only change would be if the weather was bad and then we would let you know of any changes. **The orders will be available to pick up in Tom's and Carol's garage at the address listed above.** When the orders are available on the 23<sup>rd</sup> or the week after, contact Carol at 651-439-0689 to schedule at a time convenient for you to pick your order up.

**We greatly appreciate your continued support OF OUR MISSISSIPPI HABITAT MISSION PROJECT and we hope you continue to enjoy these beautiful wreaths, swags and other items again this year.**



PLEASE PROVIDE YOUR ORDER INFORMATION TO CAROL WEBER BY ONE OF THE WAYS NOTED ABOVE **BY NOVEMBER 11<sup>th</sup>**.

NAME: \_\_\_\_\_ PHONE: \_\_\_\_\_

ADDRESS: \_\_\_\_\_

I WOULD LIKE TO ORDER \_\_\_\_\_ WREATH(S) AT \$16.50 each

I WOULD LIKE TO ORDER \_\_\_\_\_ SWAG(S) AT \$12.50 each

I WOULD LIKE TO ORDER \_\_\_\_\_ CROSSE(S) AT \$20.00 each

I WOULD LIKE TO ORDER \_\_\_\_\_ 25 FT LENGTHS OF GARLAND AT \$30 PER LENGTH

FULL PAYMENT OF \$ \_\_\_\_\_ IS ATTACHED -- **Checks made out to St. Paul Lutheran**

WILL PAY \$ \_\_\_\_\_ AT THE TIME OF PICK-UP ON OR AFTER NOVEMBER 23RD.

## Support for 2021 Scholarships in Tanzania for Mgama Parish Order form

Please include me \_\_\_\_\_ as a donor in support of

Education in Tanzania and our parish of Mgama.

I will give support in the amount of \$\_\_\_\_\_.

**Please indicate to Jan Stevens, 439-3772 or Email [grandmafishy@comcast.net](mailto:grandmafishy@comcast.net) by October 5, 2020 if you are planning on supporting this program.** Actual funds are due by October 25.

When giving your funds, please indicate on the check which can be written to St. Paul Lutheran that the funds are for Mgama Scholarships.

Any amount is sincerely appreciated by our parish as it helps their students continue their education to improve lives.

Please include this form with your donation.

# October

| Sunday                                                                                                                                 | Monday | Tuesday                                                                                                                              | Wednesday | Thursday             | Friday | Saturday                                                                              |
|----------------------------------------------------------------------------------------------------------------------------------------|--------|--------------------------------------------------------------------------------------------------------------------------------------|-----------|----------------------|--------|---------------------------------------------------------------------------------------|
|                                                                                                                                        |        |                                                                                                                                      |           | 1<br>9:00am Quilting | 2      | 3                                                                                     |
| 4<br>Visit our website<br>or Facebook<br>page for Daily<br>Readings<br>9:00am Online<br>Worship Service<br>or at 4pm on<br>Channel 18  | 5      | 6<br>1:00pm Virtual<br>Staff Mtg<br>2:00pm Virtual<br>SMART Team<br>Mtg<br>6:30pm<br>Business Mgmt<br>Mtg<br>7:30pm<br>Executive Mtg | 7         | 8                    | 9      | 10                                                                                    |
| 11<br>Visit our website<br>or Facebook<br>page for Daily<br>Readings<br>9:00am Online<br>Worship Service<br>or at 4pm on<br>Channel 18 | 12     | 13<br>1:00pm Staff<br>Mtg<br>7:00pm Church<br>Council Mtg                                                                            | 14        | 15                   | 16     | 17                                                                                    |
| 18<br>Visit our website<br>or Facebook<br>page for Daily<br>Readings<br>9:00am Online<br>Worship Service<br>or at 4pm on<br>Channel 18 | 19     | 20                                                                                                                                   | 21        | 22                   | 23     | 24                                                                                    |
| 25<br>Visit our website<br>or Facebook<br>page for Daily<br>Readings<br>9:00am Online<br>Worship Service<br>or at 4pm on<br>Channel 18 | 26     | 27                                                                                                                                   | 28        | 29                   | 30     | 31                                                                                    |
|                                                                                                                                        |        |                                                                                                                                      |           |                      |        |  |



We invite you to worship  
with us online by going to  
our website

[www.stpaulc.org](http://www.stpaulc.org), our  
Facebook page or Cable  
TV Channel 18.

