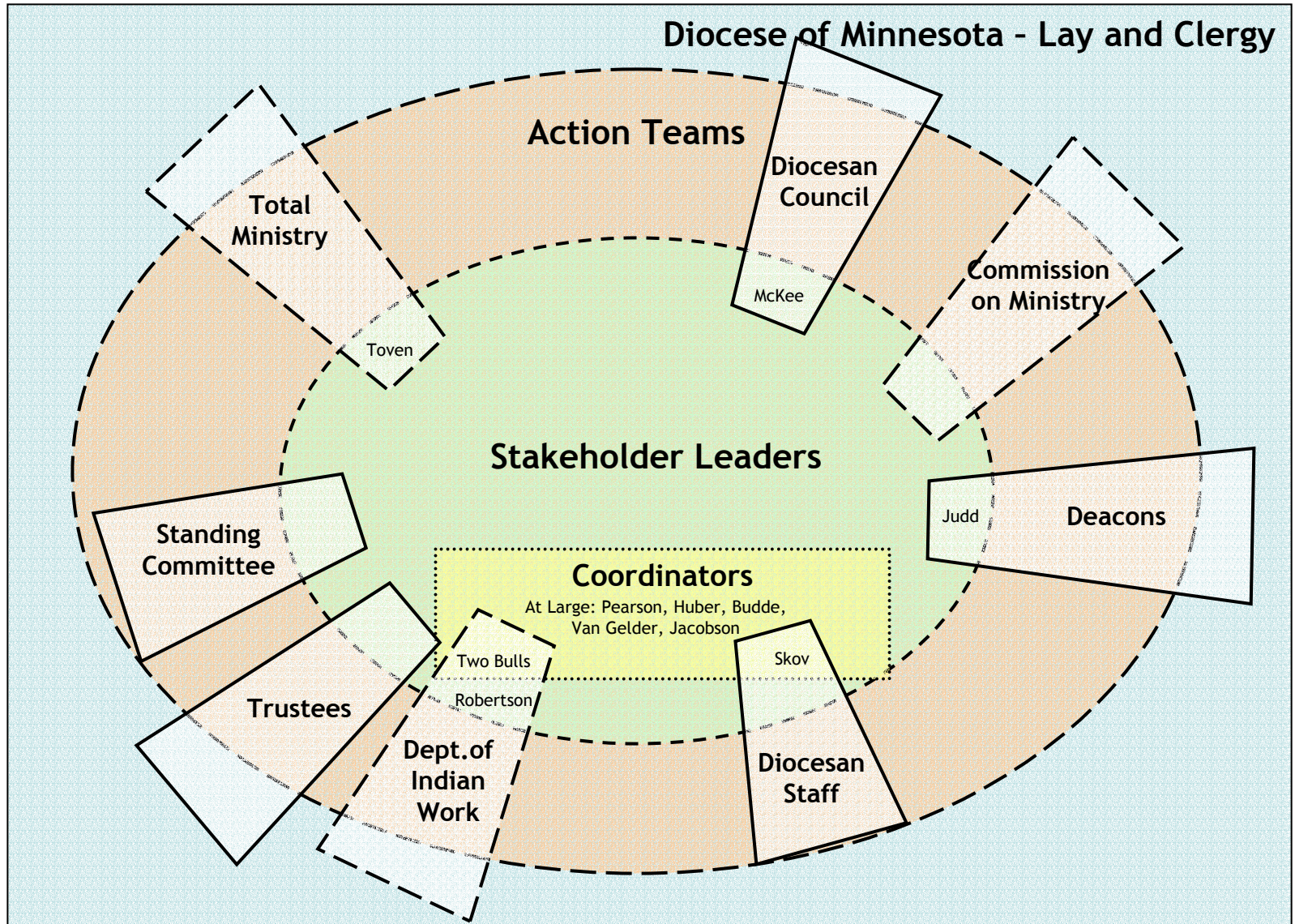


EPISCOPAL DIOCESE OF MINNESOTA MISSION STRATEGY NETWORK (MSN)

(as of 4/13/08 - this chart is organic and will be continually updated)

Additional teams to incorporate as they take assigned action steps:

- Bishop Search Committee
- Bishop Transition Committee
- Campus Ministry Network
- Clergy Conferences
- Cursillo
- Diocesan Youth Music
- ECW - Episcopal Church Women
- Emerging Church Network
- Environmental Stewardship
- Episcopal Church Homes
- Episcopal Community Services Board
- Faith Formation (Metro)
- Latino Ministries Network
- Lay Leaders' Network
- Liberian Network
- MCIW - MN Committee on Indian Work
- Regional Clergy
- Regions
- TEC
- Ugandan Episcopalians
- Union of Black Episcopalians



Solid lines = fixed membership for that team; dotted lines = fluid membership
 Team Leaders' names are inside the Stakeholder Leaders oval; additional team members are implied by the Action Teams ring
 Open attendance is implied for trapezoids reaching into the large rectangle