

date	Tally of cars entering										Parked cars			Exiting cars			Car pool rate			backlog on bypass; notes	weather
	cars in lower lots at 7:35	church lot at 7:35	pre 7:35 est.	7:35-7:40	7:40-7:45	7:45-7:50	7:50-7:55	7:55-8:00	8:00-8:05	total entering	cars in lower lots at 8:05	cars in upper lots at 8:05	% of total entering	cars exiting	est. min. after 8AM when exit light is clear	% of total entering	students at S/TM each day	students/entering car	students/ exiting car		
14-Nov	21	?	10	20	35	50	56	37	15	244	56	?	23%	188	14.17	77%	450	1.50	2.39	no backlog exceeding 1-2 cars, field trip	sunny 50 degrees
16-Nov	15	15	10	25	33	52	58	44	8	260	32	20	20%	208	18.33	80%	450	1.44	2.16	2 slight backlogs when guidance was ignored	drizzle 55 degrees
6-Dec	18	20	12	21	38	46	60	36	6	257	24	20	17%	233	23.54	91%	450	1.50	1.93	No backlog on 15/501	sunny <32 degrees
8-Dec	17	12	8	20	37	53	52	36	10	245	27	20	19%	218	20.42	89%	450	1.54	2.06	No backlog on 15/501	sunny 20's

Assumptions

time to exit at light  
cars/cycle= 12  
min/cycle= 2.5

SEE GRAPH TAB

Directions: Do a count of ALL the cars in the school and upper lots before 7:35

Park in front of the dumpsters (so you can see 15-501) and count cars entering from 15-501 or access rd.

Ignore cars passing behind you entering the other entrance. We assume there are not many.

Use your cell phone to get the count in each 5 minute block to increase accuracy, not your watch.

The goal for the school could be to prevent 15-501 backlog, flatten the peak, OR decrease total cars entering.

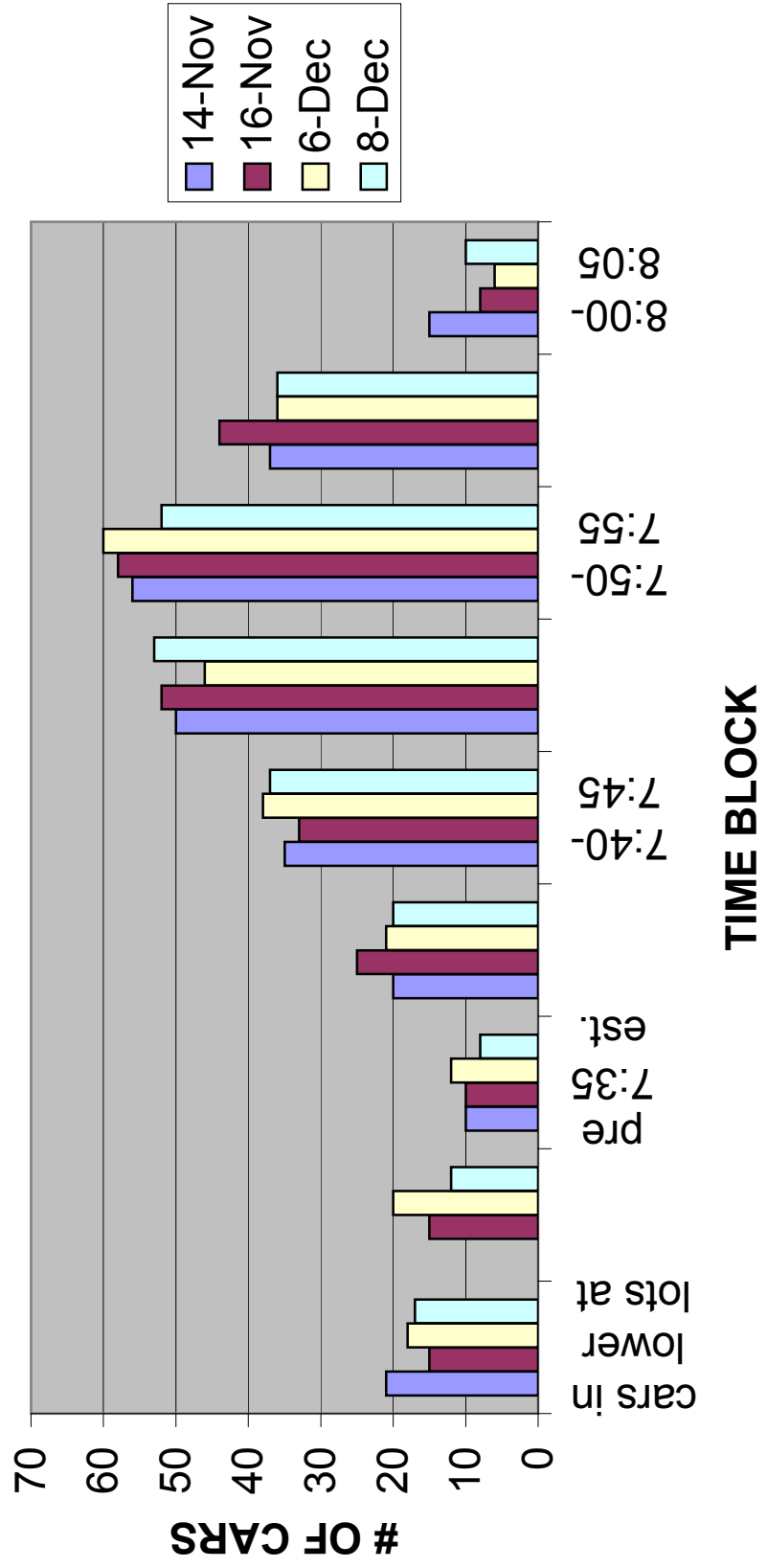
Try to note when a backlog on the bypass starts and ends. The backlog on 15-501 can be dangerous.

Ignore cars after 8:05. Drive out and record the time you exit the light. Compare to calculated time of exit.

To enter data, only enter into the yellow cells.

GRAPH 2

# CARS ENTERING STM IN AM



### Minutes necessary to empty the STM parking lot

		Cars leaving the parking lot													
		125	150	175	200	225	250	275	300	325	350	375	400	425	450
cars leaving the property per light cycle	<b>10</b>	31	38	44	50	56	63	69	75	81	88	94	100	106	113
	<b>11</b>	28	34	40	45	51	57	63	68	74	80	85	91	97	102
	<b>12</b>	26	31	36	42	47	52	57	63	68	73	78	83	89	94
	<b>13</b>	24	29	34	38	43	48	53	58	63	67	72	77	82	87
	<b>14</b>	22	27	31	36	40	45	49	54	58	63	67	71	76	80
	<b>15</b>	21	25	29	33	38	42	46	50	54	58	63	67	71	75
	<b>16</b>	20	23	27	31	35	39	43	47	51	55	59	63	66	70
	<b>17</b>	18	22	26	29	33	37	40	44	48	51	55	59	63	66
	<b>18</b>	17	21	24	28	31	35	38	42	45	49	52	56	59	63
	<b>19</b>	16	20	23	26	30	33	36	39	43	46	49	53	56	59
	<b>20</b>	16	19	22	25	28	31	34	38	41	44	47	50	53	56
	<b>22</b>	14	17	20	23	26	28	31	34	37	40	43	45	48	51
	<b>24</b>	13	16	18	21	23	26	29	31	34	36	39	42	44	47
	<b>26</b>	12	14	17	19	22	24	26	29	31	34	36	38	41	43
	<b>28</b>	11	13	16	18	20	22	25	27	29	31	33	36	38	40
	<b>30</b>	10	13	15	17	19	21	23	25	27	29	31	33	35	38
	<b>32</b>	10	12	14	16	18	20	21	23	25	27	29	31	33	35
<b>34</b>	9	11	13	15	17	18	20	22	24	26	28	29	31	33	

2.5 = minutes per cycle

Note that cars leave at the light and at the stop sign.

STM is currently approved under our existing SUP for appx 265 paved marked parking spaces.

Most cars parked on the access road must leave from the light or the stop sign.