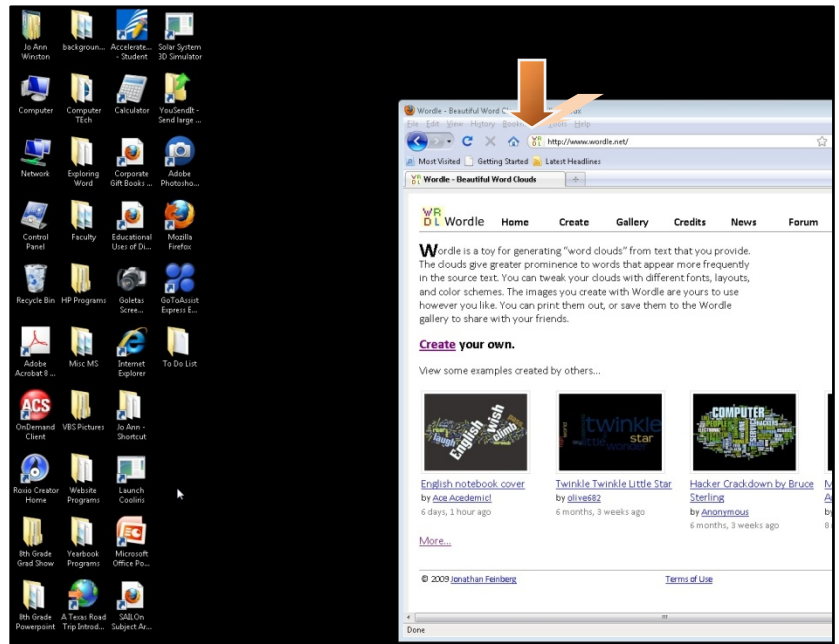


Adding a link to a Website on your Desktop

If you enjoy all of the new websites that we have been going to; such as Wordle, FlashcardsDB, and Free Rice, and you don't want to just bookmark the site, but want a link on your desktop, you've come to the right place.

Let's place a link to Wordle on our desktop as an example:

Step 1. Go to the internet and type in [www. wordle.net](http://www.wordle.net) Then in case your browser window is taking up your whole desktop, click on the two boxes up in the top right corner and "restore down" your browser window so you can see some of your desktop.



Step 2. Click on the icon that is next to the URL in the address bar and "drag" it to your desktop.

Step 3. There, now you have an icon linking you to your favorite website!

