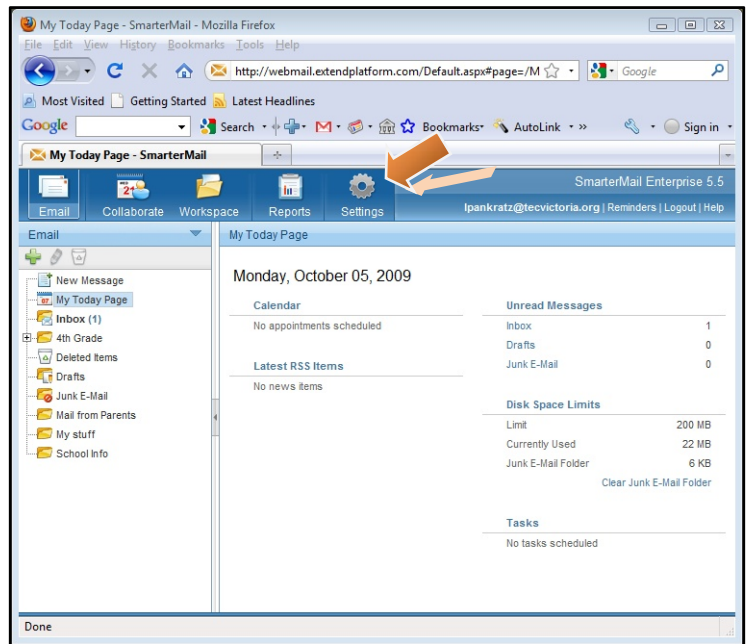


Adding a Sent Folder to SmarterMail

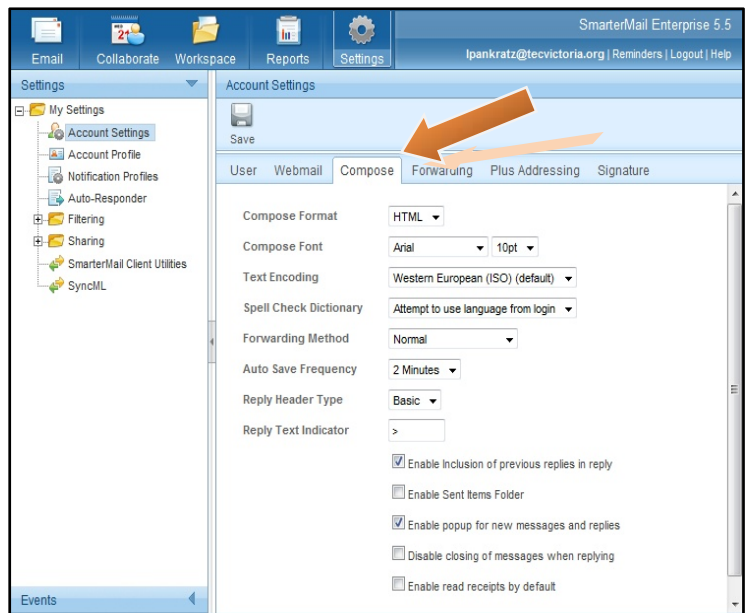
If you are looking on your SmarterMail Account, and find that you don't have a "Sent" folder, here is how you can add one:

Log into your SmarterMail Account:

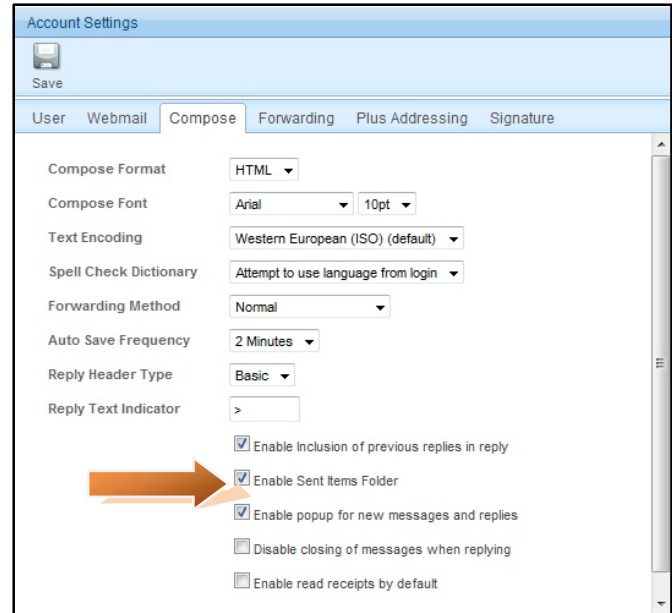
Step 1. Click on the "Settings" button at the top.



Step 2. Click on the "Compose" tab.



Step 3. Check the “Enable Sent Items Folder.”



Step 4. Click “Save” and log out. Your “Sent” items folder should now be visible.

