

---

---

# ❖ Faith Builder ❖

---

---

Volume 15 Issue 7

“A Church with a Heart for People”

June 2008

---

---

## Vacation Bible School

Vacation Bible School will be held July 7—11. Join us at SonWorld Adventure Park where we'll take a Wild Ride with Jesus! It's not too late to register. We'll take registration forms through July 6th, however, pre-registration guarantees your child will receive a cool t-shirt and their ticket to a fun time! Grab a form from the Narthex or talk to Kate Riddle or April Haberman for more information. And feel free to invite a friend.

Beginning June 18, the congregation is invited to come out on Wednesday evenings at 6 PM to prepare rooms, props, and materials for VBS. If you cannot come on these evenings but would like to help, contact April or Kate for projects you can work on at home. There will be a church-wide decorating party on June 29th immediately following fellowship. Feel free to wear your blue FCC t-shirts and join us for a great time of fellowship as we roll up our sleeves and join together for this festive party. Lunch will



---

*Join us at SonWorld Adventure Park where we'll take a wild ride with Jesus! Pre-register to insure a cool t-shirt.*

---

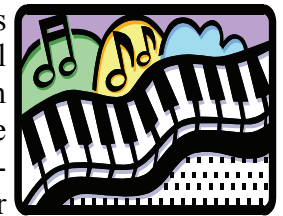
be provided so be sure and let April know if you are planning to stay and help.

VBS staff volunteer training will be on June 22 following the dessert auction. All adult and teen volunteers should plan on attending, as the format for VBS is slightly different this year. If you have not completed a background check form, please see Kate Riddle prior to June 22.

5th and 6th graders will be doing service projects 3 of the 5 days of VBS. This is a great way for you kids to get volunteer hours, if needed.

## Linda Neevel's Retirement

In 1984, Linda Neevel became the primary organist at Faith Church. She has been playing ever since. Through the years, she has also played the piano and on occasion shared her violin capabilities. She has ably accompanied many soloists and groups for special music. On Sunday, June 1, we are going to honor Linda at the 9



AM service and recognize her for her years of service. Linda is going to retire as a scheduled accompanist. Her eye sight, severely limited by macular degeneration, has made it too difficult for her to continue. We encourage you to come out and express your appreciation for her years of gracious and faithful accompaniment. A reception following the service will be held in her honor.

---

## Pancake Breakfast

On Sunday, June 8, right after Fellowship, the Youth Group of Faith Church will be hosting a pancake breakfast. Donations will be accepted to help defray the expenses of going to Creationfest this summer at the Gorge Amphitheater.

---

## Bethany Coin Banks

The Bethany Coin Banks will be returned June 16. Please remember to be in prayer for our partner Bethany Christian Services as they assist many parents and children with adoption, foster care, and pregnancies.

---

## Graduation

We want to recognize all Junior High through College grads on Sunday, June 8. Anyone who is graduating this spring should call the office by June 5 to be included in the service.

## New Sign

Our church sign is one of the most consistent invitations to our neighbors. It has served faithfully for nearly 20 years. At the last Consistory meeting, we approved the beginning of a fund to upgrade the sign. Our goal is \$2,500 to replace the internal sign/letter board, to replace the lexan cover, to repair the electrical components, and to repaint the metal. A special monthly offering will be held to help us reach our goal.

---

## Disaster Relief Offering

On Sunday, June 1<sup>st</sup> a special offering will be received for disaster relief in Myanmar and China. Our partner Church World Service is already working with the people hit by the cyclone and the earthquake. 100% of the donations will go toward disaster relief. Please remember the survivors and the people working with them in prayer.

## Church Campout

Faith Family Campout at Jim Creek, Aug 15 and 16. Tent camping is \$20. A variety of rooms are available for 2 to 6 people from \$30 to \$85. Meals are \$20 per person over 9 years of age. There are a variety of activities including hiking, fishing, and boating. There are indoor activities also. Contact Marlene Lafoon for more information.

---

## Dessert Auction

Our annual dessert auction will take place on Sunday, June 22 during the fellowship hour. All money raised will go toward our Habitat for Humanity mission trip to Chelan. Look for a sign up sheet in the bulletin through out the month of June to donate a homemade dessert.

If you are interested in going to Chelan with the group, please contact Teri Peterson by June 8. They will be working on a Habitat for Humanity house. The team is limited to teens and adults.

## Blood Drive

Faith Community Church will be hosting a blood drive with the Puget Sound Blood Center on Monday, June 2 from 1 to 7 PM. You can call the church (206) 542-8883 to make an appointment. Friends and neighbors are welcome to participate.

---

## Facility Fixers

NEW TIME! Monday, June 16, our monthly Facility Fixers meeting is moving to 6:30 PM for the summer. This evening time slot will allow more people to come out and join us. The gathering will start with a meal and then we will work on various campus projects. We have inside and outside tasks that are appropriate for men and women. Come and share a community meal and help keep our campus fresh.

---

## ***Bathroom Remodel***

***Donations Received—\$62,341***

***Cost of Remodel—\$58,834***

***Sunday School Rooms—\$2,189***

---

## Faith Builder

Faith Community Church  
10220 - 238th St. SW  
Edmonds, WA 98020  
(206) 542-8883

Non-Profit Org.  
U.S. Postage  
PAID  
Lynnwood, WA  
Permit No.  
1043

---

### *Inside This Issue*

- ☞ Evening Facility Fixers*
  - ☞ Dessert Auction*
  - ☞ Vacation Bible School*
-