

Bible Study for 2008-2009



Horizons Bible Study

Jubilee! "Luke's Gospel for the Poor"
(Esther, Priscilla, Ruth, Sarah)

Understanding Jesus in the World of Luke
(Lydia)

2008-2009 Calendar of Events

- Sep 13 **Joint Circle Meeting / Luncheon**
Overview of the Gospel According to Luke
- Oct 11 **Presbytery PW Fall Gathering**
Northminster Pres Church/Reisterstown, MD
- Oct 25 **Woods Women's Mini-Retreat**
Woods Memorial Presbyterian Church
- Nov 22 **Holiday Bazaar at Woods**
- Mar 6-8 **Adult Education Women's Retreat**
Skycroft Conference Center
- Apr 18 **Presbytery PW Spring Gathering**
Woods Memorial Presbyterian Church
- May 9 **Spring Daughters Banquet**
- Jun 11-14 **Synod PW Summer Gathering**
Massanetta Springs Conference Center, VA
- Jul 11-15 **Triennial National PW Gathering**
Louisville, KY

Church Women United Celebrations

- Sun, Oct 5 **World Wide Communion**
- Fri, Mar 6 **World Day of Prayer**
- Fri, May 1 **May Friendship Day**

Special Offerings



Fellowship of the Least Coin

An interdenominational offering to support worldwide mission. Based in the Biblical story of the widow's mite, the Fellowship of the Least Coin is a regular monthly offering of prayer and money. Our pennies, representing the "least coin" of the United States, combined with the least coins of other women around the world are used to support ecumenical projects for women. PW send their contributions through Church Women United to the Fellowship of the Least Coin in Switzerland. This offering is dedicated in the fall.

Thank Offering



As Presbyterian Women in the Presbyterian Church (USA), we give thanks for God's many blessings to us and make a contribution to the Thank Offering. This offering is a 100-year tradition supporting mission throughout the world with 40% of the receipts going toward health ministries. The remainder is used to fund proposals that deal with issues such as childcare, the elderly, violence, hopelessness and injustice. This offering is collected in the fall.

Birthday Offering



We celebrate the birthday of the Presbyterian Woman by tradition of the Birthday Offering that originated in 1992 on the tenth anniversary of Women of the Church. The money goes to missions that are not included in the general Assembly mission support. The programs are chosen on the basis of meeting the needs of hurting people and with the faith that adequate money to fund them will be received. A penny of each year of one's age (or \$1.00) or "give as you are blessed". This offering is collected in the spring.

PWOW



Presbyterian Women Of Woods

What's a "PW"?

Are you a Presbyterian? Are you a woman? If you can answer "yes" to both, then you are a PW. PW is not something you join – it's something you ARE.

And as a Presbyterian Woman of Woods (PWOW), you also have an opportunity to participate in one of the five PWOW Circles. These Circles meet once a month from September through May for Bible study, prayer, mission support and fellowship.

PWOW Circles meetings are structured around Bible study. Each Circle selects a Bible study curriculum for the program year, and this year all five Circles are studying *Jubilee! "Luke's Gospel for the Poor"* (Esther, Priscilla, Ruth, Sarah). *Understanding Jesus in the World of Luke* (Lydia).

PWOW Circles support mission efforts locally, nationally and globally in numerous ways. Did you know that the ever-popular Woods Bazaar is a project of PWOW and that all the proceeds are used to support mission efforts?

PWOW Circles provide each woman in our Woods community an opportunity to meet other women and to cultivate closer friendships with her sisters in Christ. We also schedule special programs several times a year to bring women of all ages together for additional Christian fellowship.

Please take a look at the descriptions of our five Circles and prayerfully consider which of them is the best match for your schedule. If you would like to visit several of the groups before deciding which one is the one for you, please feel free to drop in on any Circle at any time. For more information just contact the Circle Leader.

PWOW CIRCLES

All Circles meet once a month, and all welcome newcomers at any time. Meetings generally are held at the church, and childcare is provided if requested in advance. All Circles include Bible

study, prayer, mission support and fellowship. Participants may choose to volunteer to provide opening devotions, to lead the Bible study lesson or to provide refreshments. Although all Circles are intergenerational, some tend to draw a particular community of women (e.g., younger women including mothers with small children, career women including those who work during the day, older women including retirees and those with adult children and grandchildren, etc.).

ESTHER CIRCLE

First Thursday of the month, 9:30 – 11:00 AM in Room 401, contact Jean Parker. Mostly made up of older women, including retirees and those with adult children and grandchildren.



LYDIA CIRCLE

Third Monday of the month, 7:00 - 9:00 PM in the Office Conference Room, contact Marcia Slentz-Whalen. Especially convenient for career women and any others who need an evening meeting time.



PRISCILLA CIRCLE

Second Tuesday of the month, 9:30 – 11:30 AM in Room 208, contact Judy Lupfer. Intergenerational with strong emphasis on Bible study. Mission projects include gifting a SPAN family with Christmas gifts.



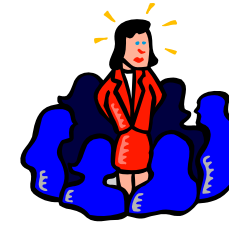
RUTH CIRCLE

Second Tuesday of the month, 10:00 - 11:30 AM in Room 152, contact Barbie Willis. Mostly made up of older women, including retirees and those with adult children and grandchildren.



SARAH CIRCLE

Second Tuesday of the month, 9:30 - 11:00 AM in Room 150, contact Tiffany Dean. Many participants are younger women, and some are mothers of pre-school and school age children.



Presbyterian Women in the Congregation (PWOW)

As a Member of the **Presbyterian Women of Woods**, you are a part of Presbyterian Women in the Baltimore Presbytery, which has its membership in Presbyterian Women in the Synod of the Mid-Atlantic. This includes the Presbyteries in Delaware, Maryland, North Carolina, Washington, D.C., and part of West Virginia and Virginia. Presbyterian Women in the Synod of the Mid-Atlantic support Presbyterian Women in the Presbyterian Church (USA), the national organization.



Our Mission Statement

Forgiven and freed by God in Jesus Christ and empowered by the Holy Spirit, we commit ourselves to:

- ✠ Nurture our faith through prayer and Bible study;
- ✠ Support the mission of our church and the church worldwide;
- ✠ Work for justice and peace;
- ✠ Build and inclusive caring community of women that strengthens the Presbyterian Church (USA), and
- ✠ Witnesses to the promise of God's Kingdom.