

PARISH DATA SYSTEM

14425 N. 19th Avenue
Phoenix, Arizona 85023-6702

(877) 737-4457
Fax (602) 789-0597

Dear PDS Facility Scheduler User,

Enclosed you will find an update for the PDS Facility Scheduler program.

Corrections Included in this Version 3.1 E

Event Packages - Corrections

- ◆ When asking to schedule a package event that already had a date, if that date was before today, the program displayed the error "List index out of bounds".

Yearly Calendar - Corrections

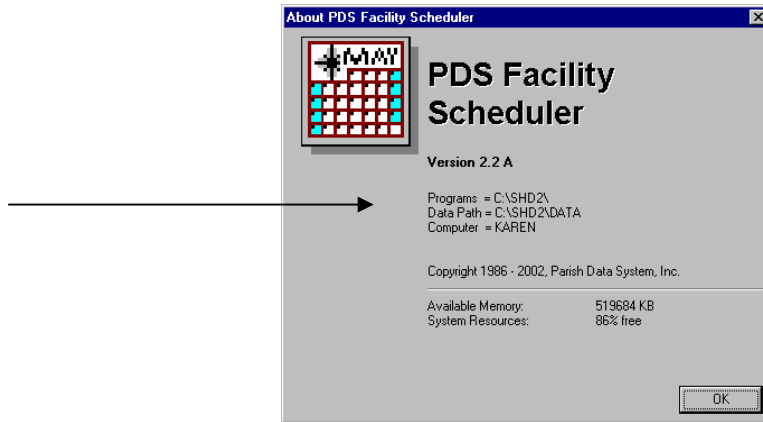
- ◆ Using the Print Button on the View Yearly Calendar screen always printed a calendar for the current year, no matter which year you were viewing.

To Install this Program Update:

You can use the Setup program on the CD to install this update. It will not affect your existing data in any way.

Determine your program path and database directory:

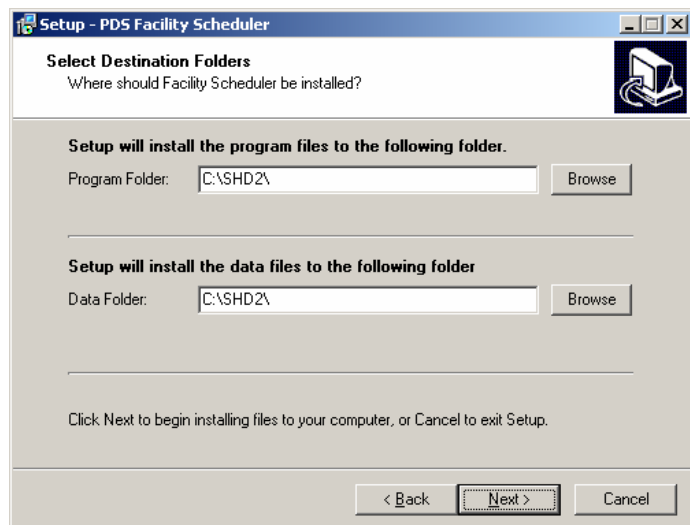
You need to install this update in the same subdirectory where your Scheduler version 4.0 E, 4.0 F or 4.0 G is located. To determine exactly where this is, start the PDS Facility Scheduler program. Click on Help in the Menu Bar at the top of the screen, then choose About PDS Facility Scheduler. A dialog like the one shown below will appear:



If the path name after “Programs=” and after “Data Path=” are not the same as in the example above:

- Step 1 Write down the path you see after “Programs=” above. In this example, write down “C:\SHD2\”.
- Step 2 Write down the path you see after “Data Path=” above, **but remove “\DATA” from the end**. In this example, write down “C:\SHD2\”.
- Step 3 Exit the PDS Facility Scheduler program. Then start the setup program on the CD.
- Step 4 Click on Next on the Welcome Screen.
- Step 5 **Select Destination Folders:** The setup program should already have the correct locations for the Program Folder and Data Folder. If you need to make corrections, type in the correct path using the keyboard or click on the Browse button to select a folder using the mouse.

Note on path names: The program folder and data folder are normally identical unless you are running the program over a network or have located your data in a separate folder from the program.



- Step 6 Click the Next button to begin copying files.

Network note: When installing on a network, **first install this update on the server**. If the program and data are located on the server only, you do not need to install this update on each workstation. If the programs are located on individual workstations, **then you must install it on each network station**.